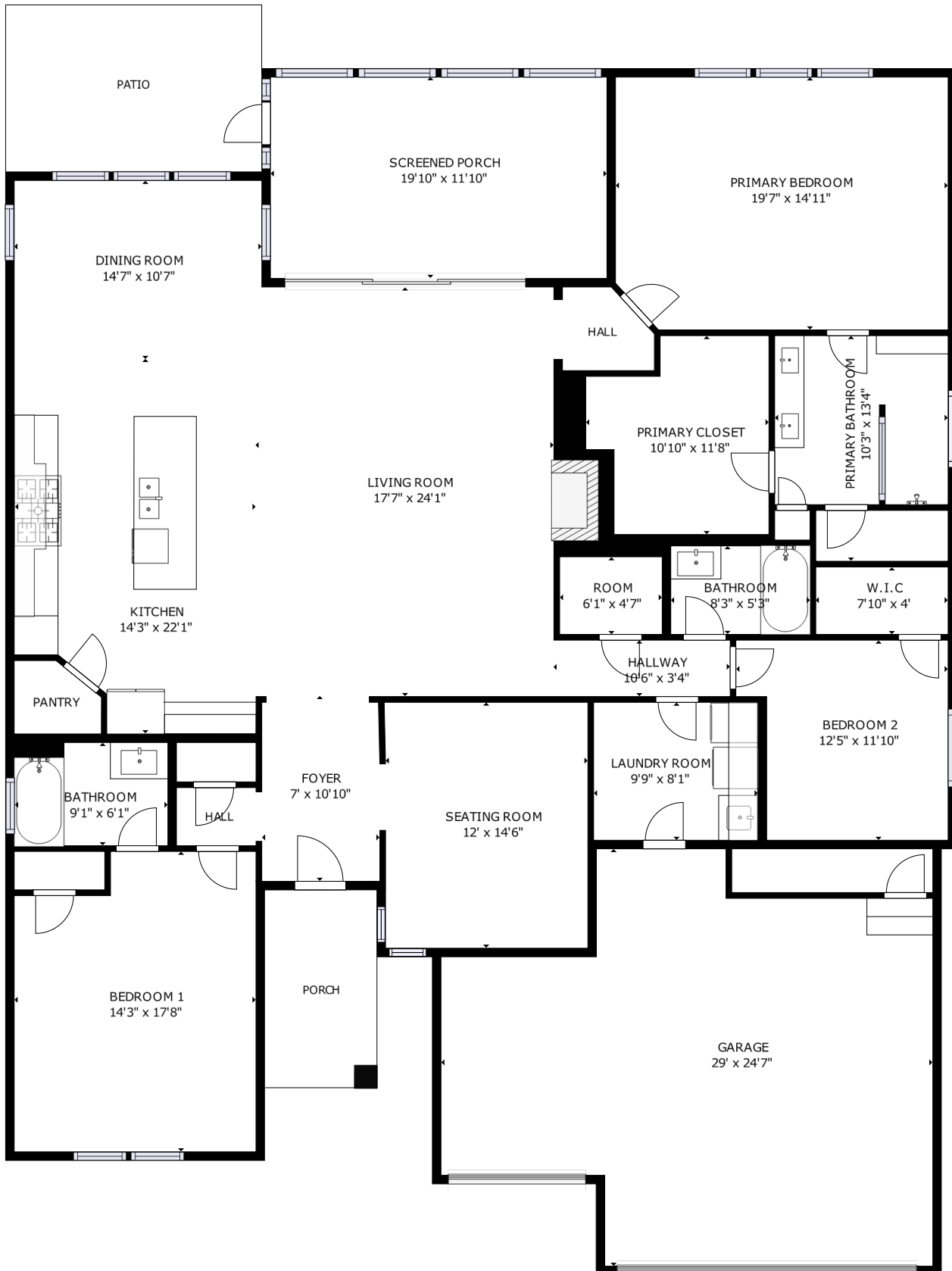


111 Ivy Terrace Road

Nexton | Summerville, SC 29486



GROSS INTERNAL AREA
FLOOR 1: 2480 sq ft
EXCLUDED AREAS; PORCH: 78 sq ft, GARAGE: 598 sq ft, PATIO: 173 sq ft, SCREENED PORCH: 236 sq ft
TOTAL: 2480 sq ft
SIZES AND DIMENSIONS ARE APPROXIMATE, ACTUAL MAY VARY.