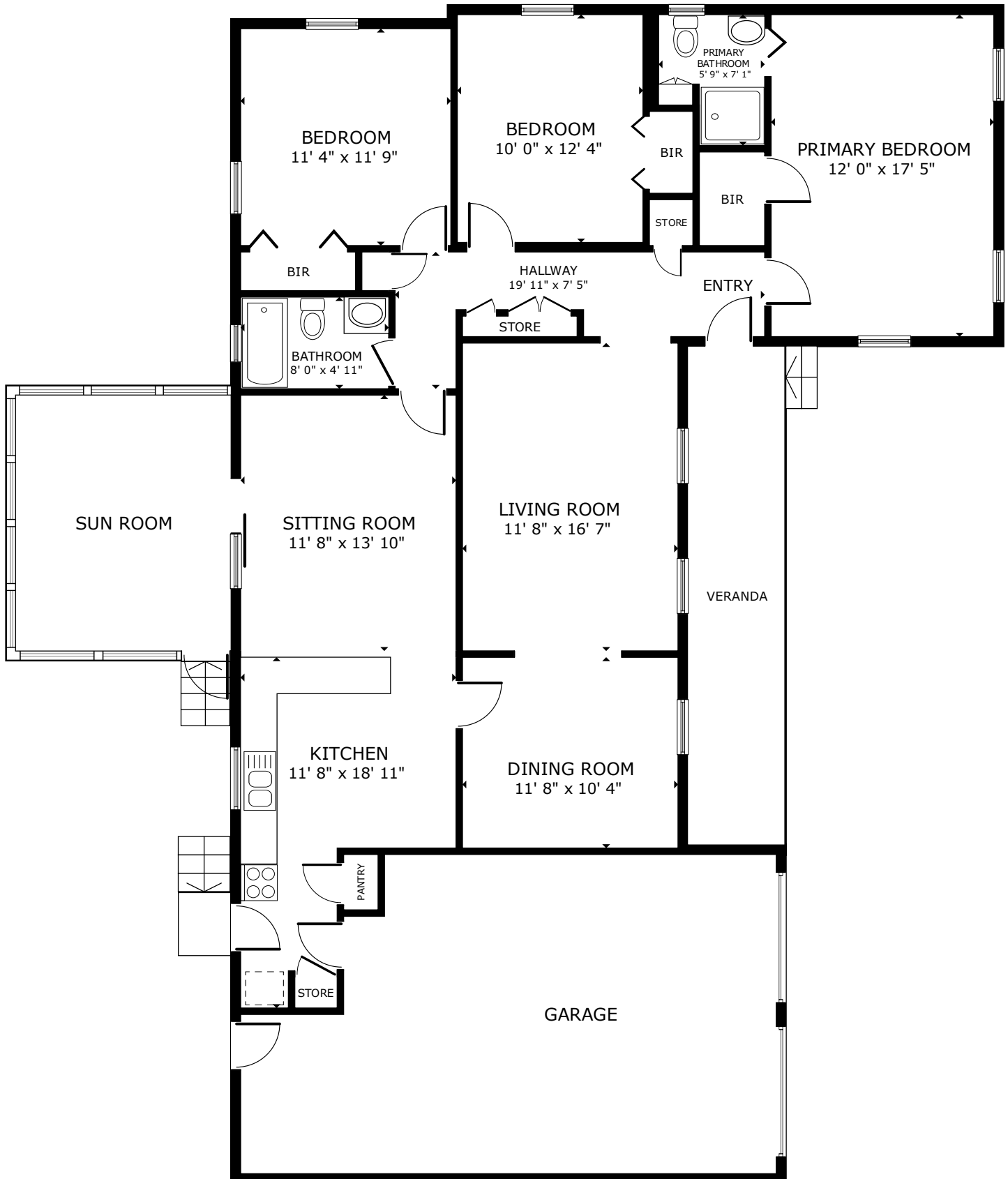


1828 Houghton Drive

Laurel Park | Charleston, SC 29412



GROSS INTERNAL AREA
FLOOR PLAN 1,428 sq.ft.
EXCLUDED AREAS : SUN ROOM 161 sq.ft. VERANDA 143 sq.ft. GARAGE 443 sq.ft.
TOTAL : 1,428 sq.ft.
SIZES AND DIMENSIONS ARE APPROXIMATE, ACTUAL MAY VARY.