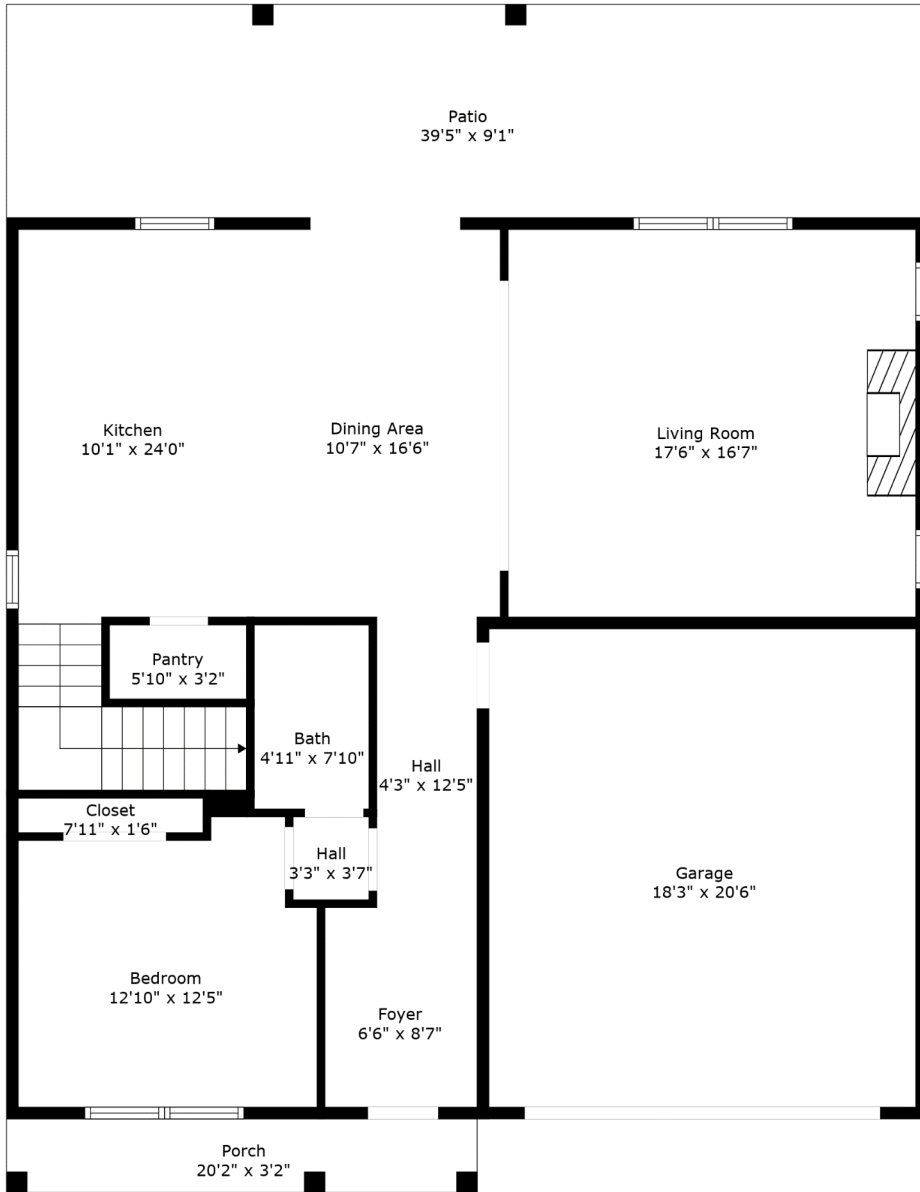
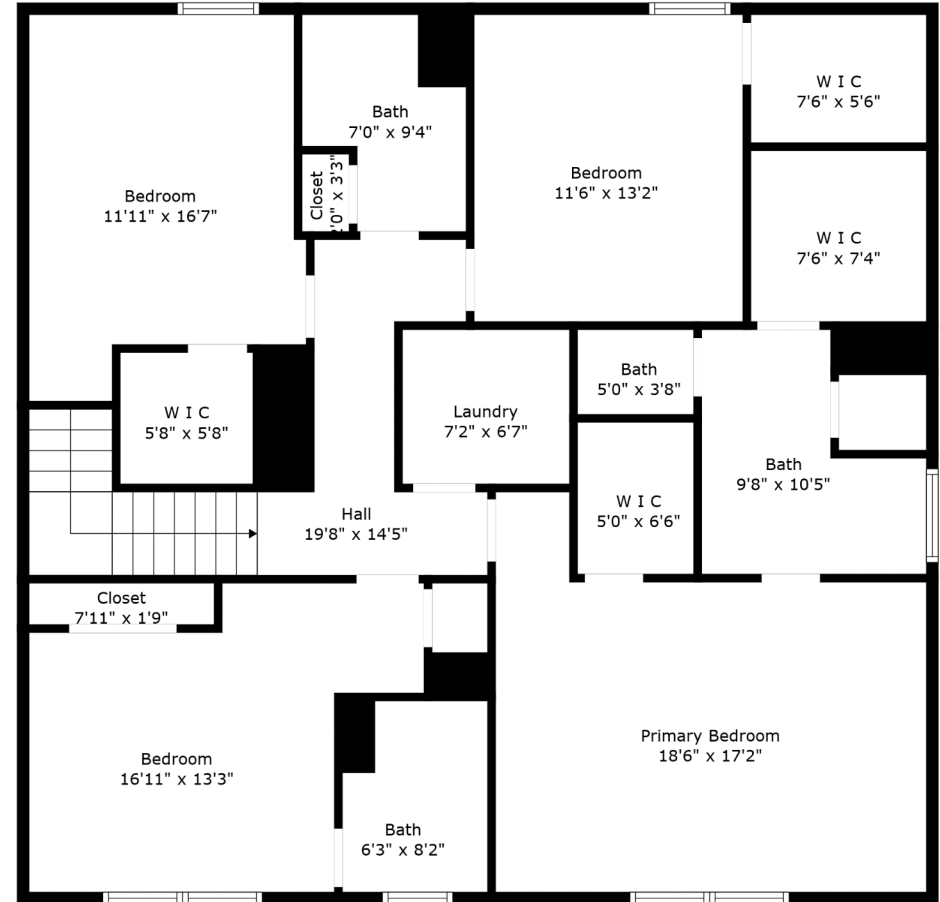


**246 Hyrne Drive**  
Medway Landing  
Goose Creek, SC 29445



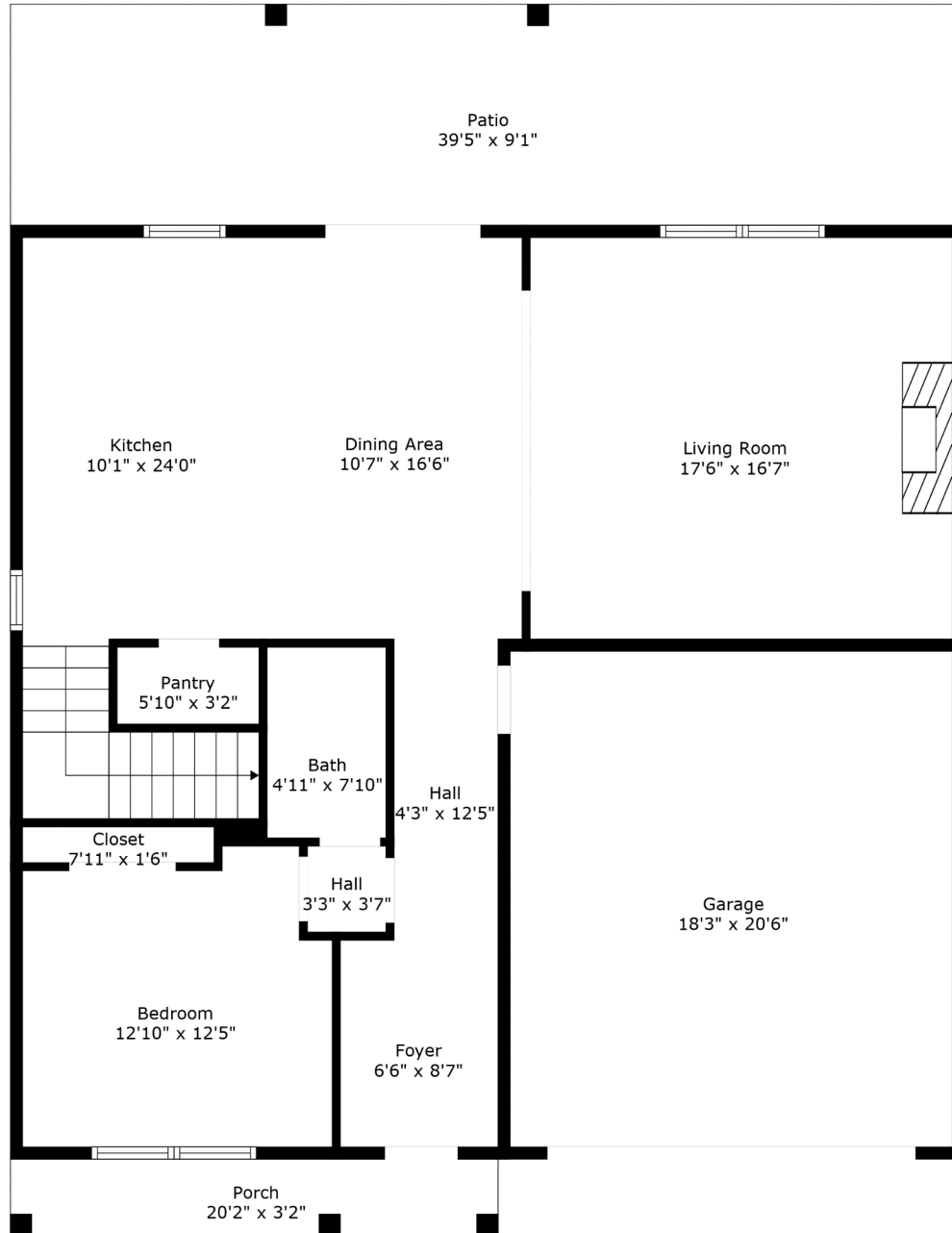
Floor 1



Floor 2

**TOTAL: 2497 sq. ft**  
FLOOR 1: 1051 sq. ft, FLOOR 2: 1446 sq. ft  
EXCLUDED AREAS: PORCH: 64 sq. ft, PATIO: 361 sq. ft, GARAGE: 375 sq. ft

Measurements Are Calculated By Cubicasa Technology. Deemed Highly Reliable But Not Guaranteed.



Floor 1

**TOTAL: 2497 sq. ft**

FLOOR 1: 1051 sq. ft, FLOOR 2: 1446 sq. ft

EXCLUDED AREAS: PORCH: 64 sq. ft, PATIO: 361 sq. ft, GARAGE: 375 sq. ft

# 246 Hyrne Drive

Medway Landing  
Goose Creek, SC 29445



Floor 2

**TOTAL: 2497 sq. ft**

FLOOR 1: 1051 sq. ft, FLOOR 2: 1446 sq. ft

EXCLUDED AREAS: PORCH: 64 sq. ft, PATIO: 361 sq. ft, GARAGE: 375 sq. ft

Measurements Are Calculated By Cubicasa Technology. Deemed Highly Reliable But Not Guaranteed.