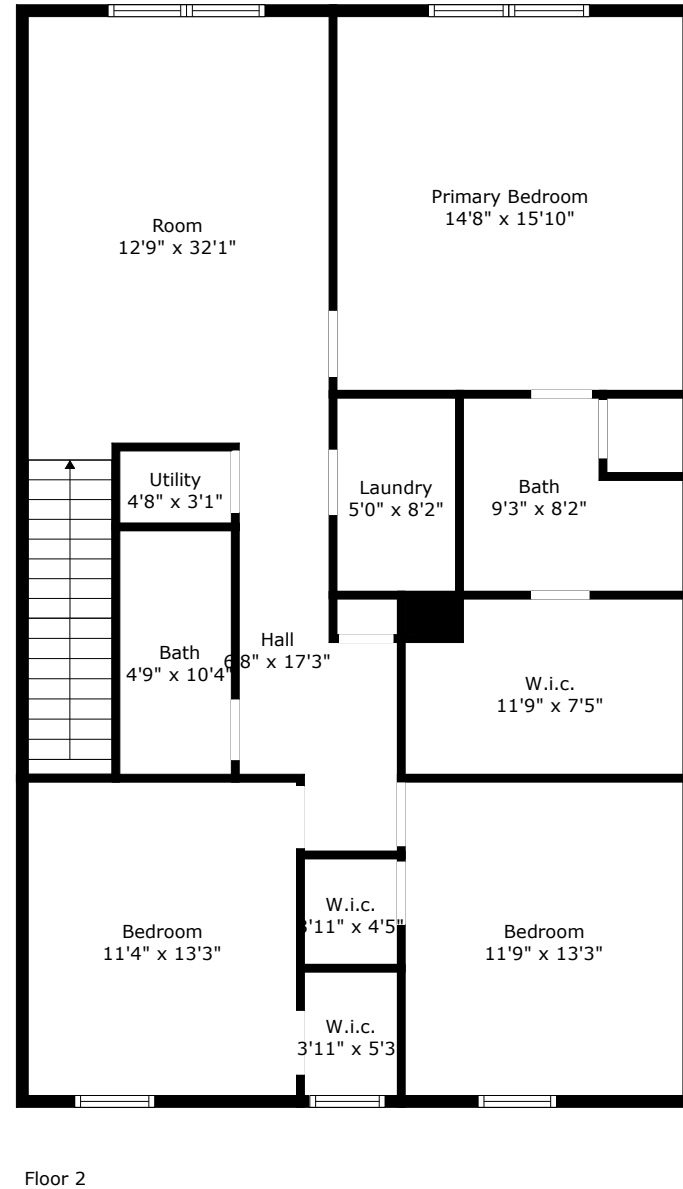
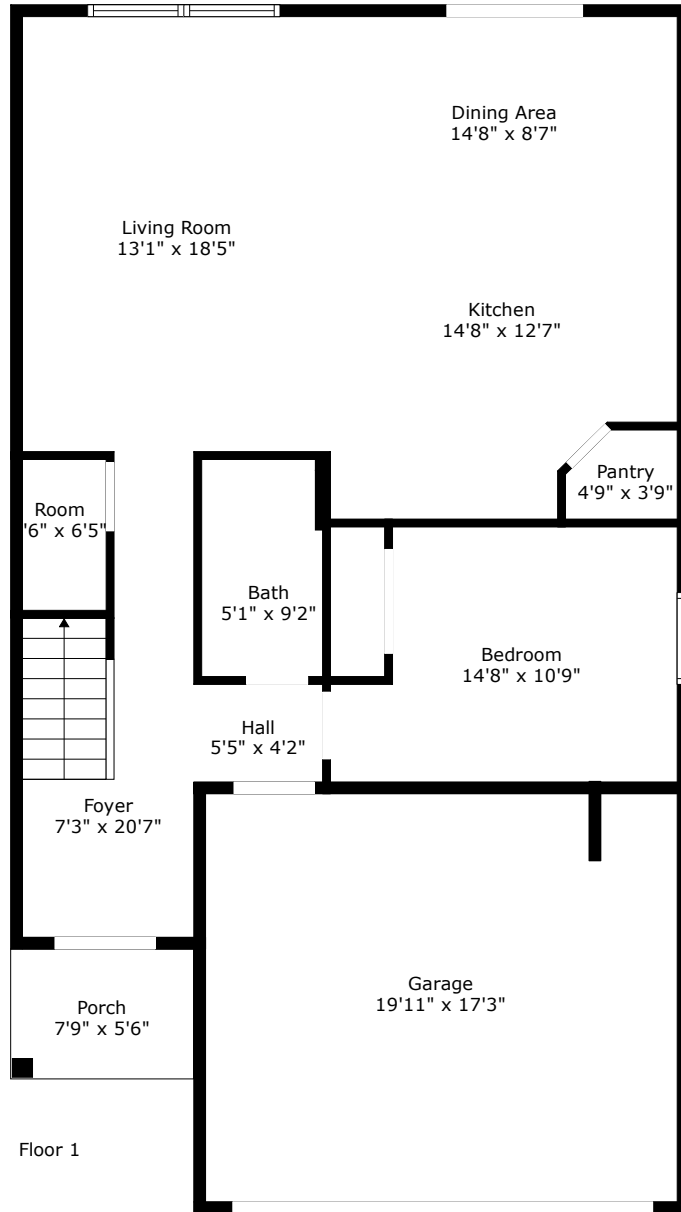


465 Pender Woods Drive

Cane Bay Plantation | Summerville, SC 29486

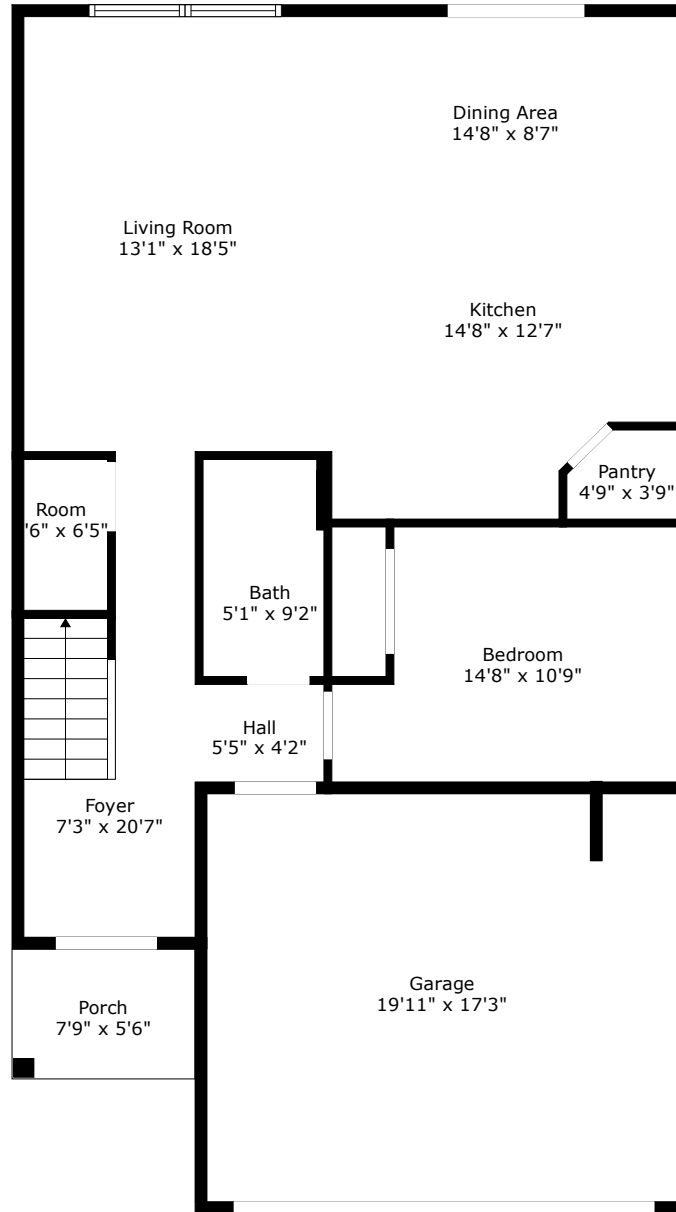


TOTAL: 2210 sq. ft
FLOOR 1: 945 sq. ft, FLOOR 2: 1265 sq. ft
EXCLUDED AREAS: GARAGE: 343 sq. ft, PORCH: 42 sq. ft



465 Pender Woods Drive

Cane Bay Plantation | Summerville, SC 29486



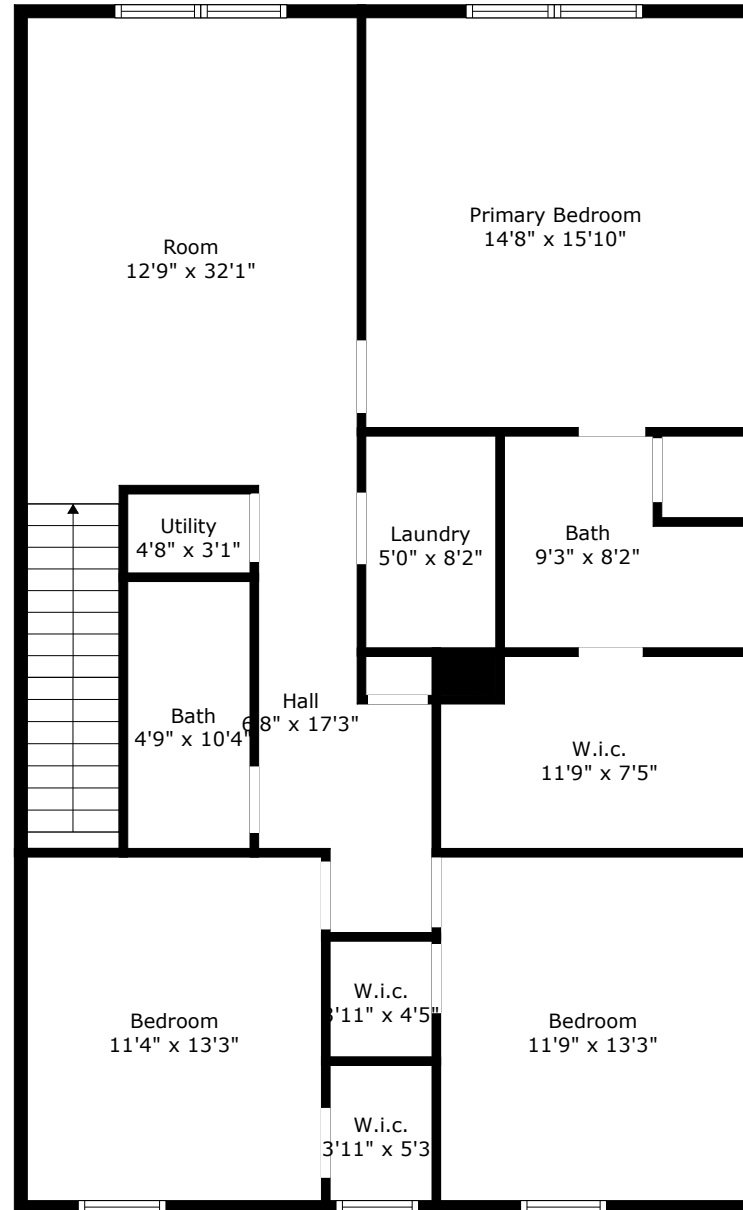
Floor 1

TOTAL: 2210 sq. ft
FLOOR 1: 945 sq. ft, FLOOR 2: 1265 sq. ft
EXCLUDED AREAS: GARAGE: 343 sq. ft, PORCH: 42 sq. ft



465 Pender Woods Drive

Cane Bay Plantation | Summerville, SC 29486



Floor 2

TOTAL: 2210 sq. ft
FLOOR 1: 945 sq. ft, FLOOR 2: 1265 sq. ft
EXCLUDED AREAS: GARAGE: 343 sq. ft, PORCH: 42 sq. ft

