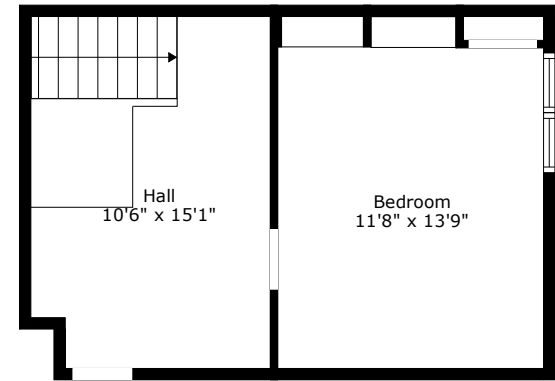
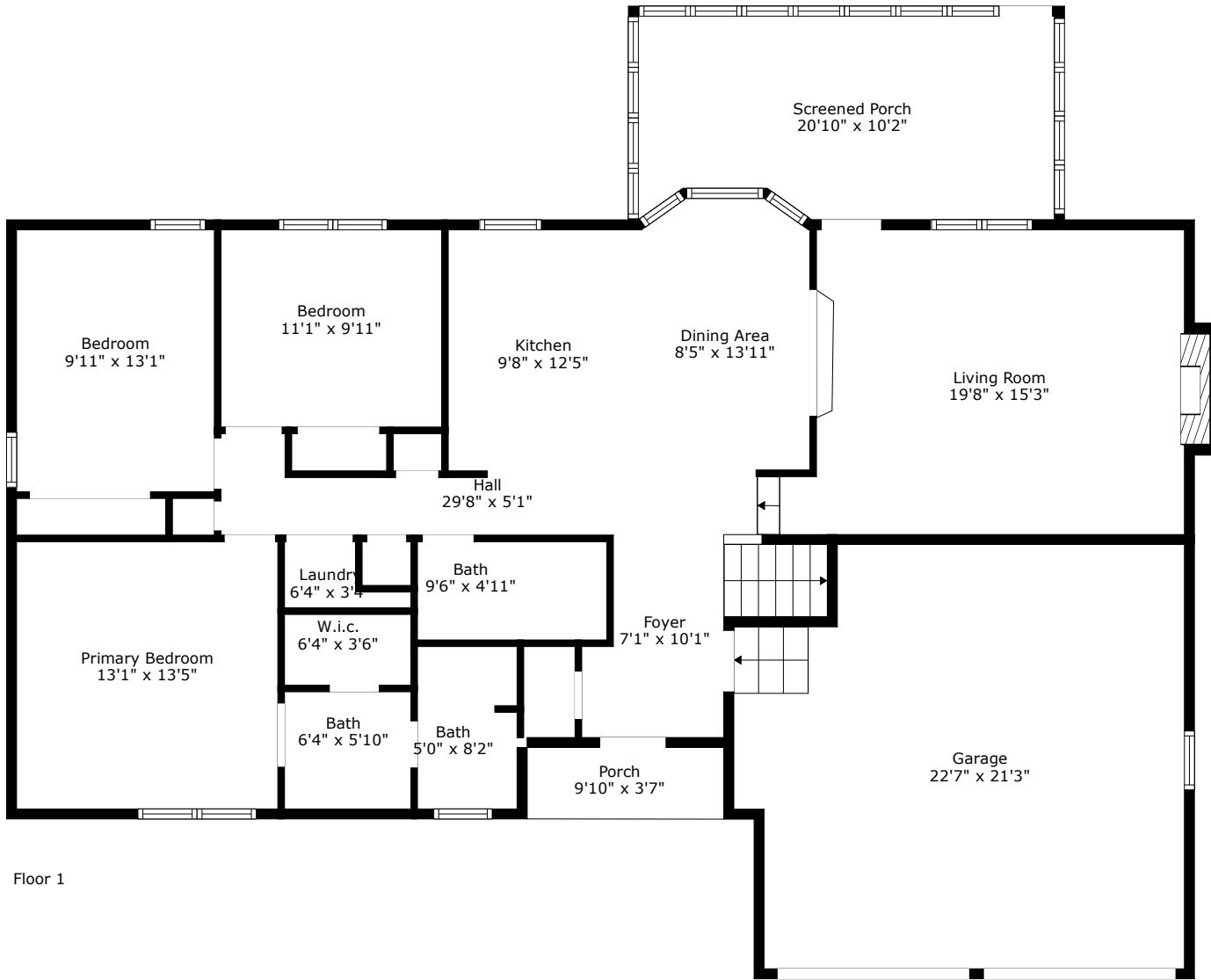


# 112 Blue Heron Drive

Quail Arbor | Summerville, SC 29485

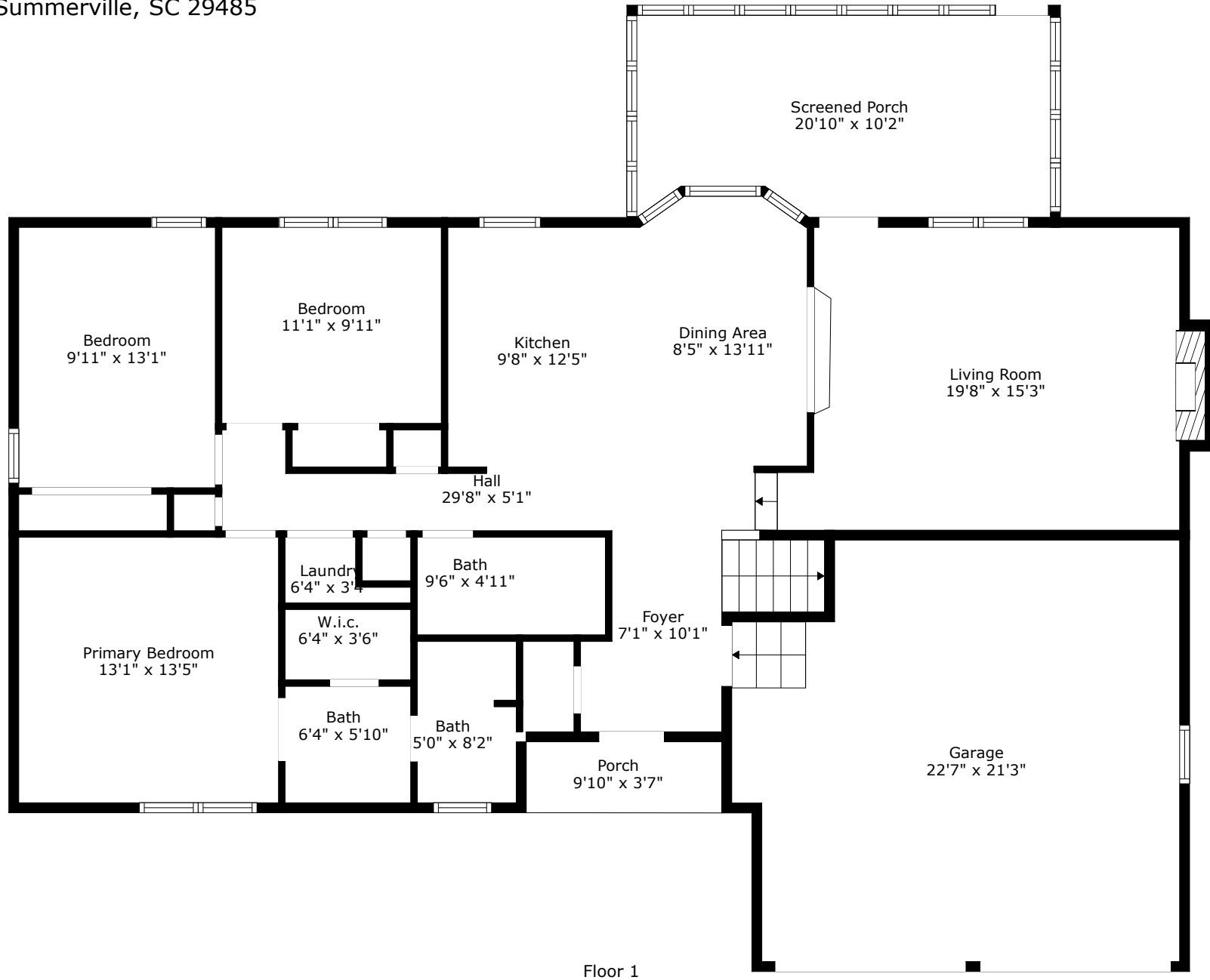


**TOTAL: 1715 sq. ft**  
FLOOR 1: 1377 sq. ft, FLOOR 2: 338 sq. ft  
EXCLUDED AREAS: PORCH: 35 sq. ft, SCREENED PORCH: 202 sq. ft, GARAGE: 446 sq. ft,  
FIREPLACE: 9 sq. ft, LOW CEILING: 9 sq. ft



# 112 Blue Heron Drive

Quail Arbor | Summerville, SC 29485

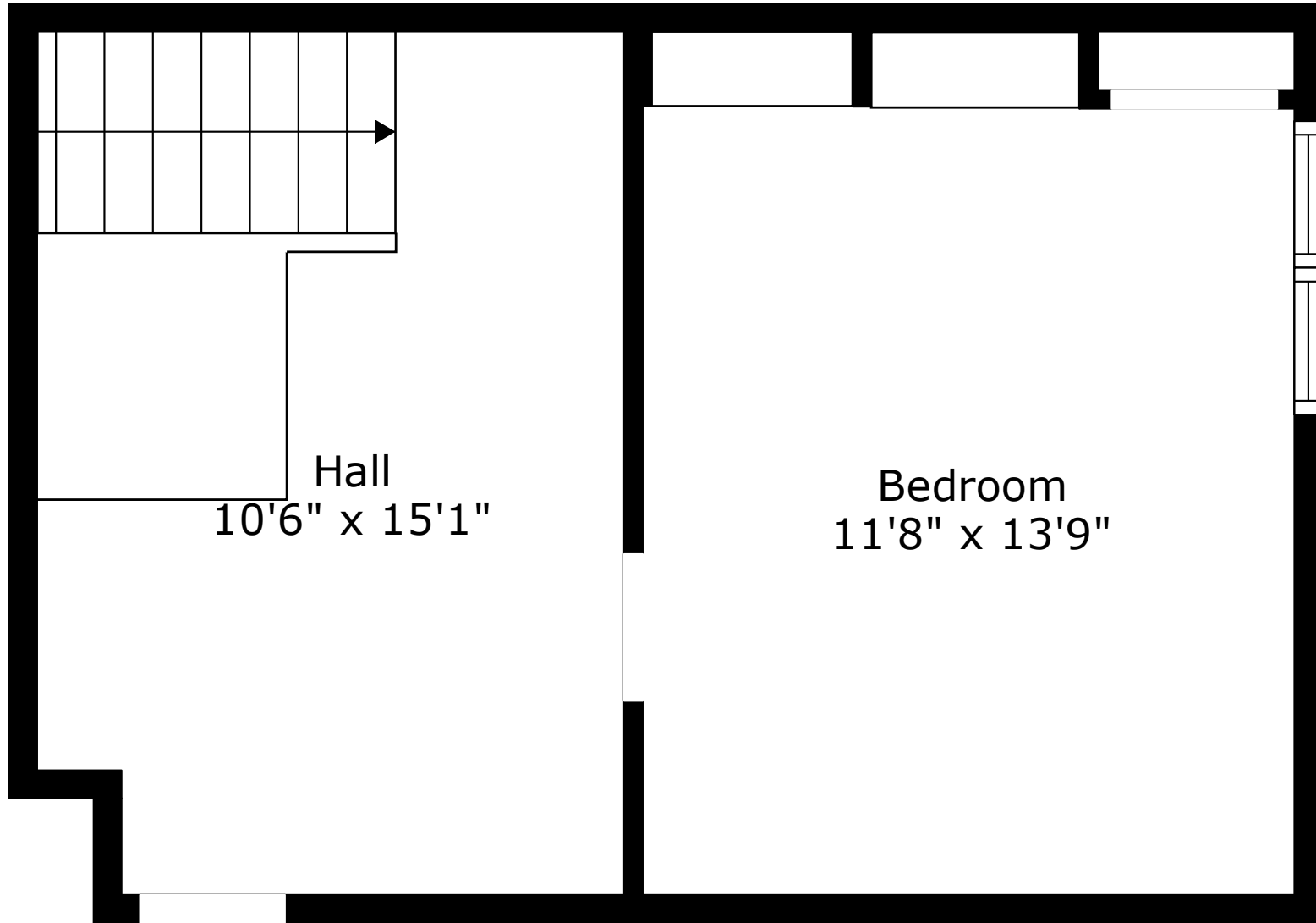


**TOTAL: 1715 sq. ft**  
FLOOR 1: 1377 sq. ft, FLOOR 2: 338 sq. ft  
EXCLUDED AREAS: PORCH: 35 sq. ft, SCREENED PORCH: 202 sq. ft, GARAGE: 446 sq. ft,  
FIREPLACE: 9 sq. ft, LOW CEILING: 9 sq. ft



# 112 Blue Heron Drive

Quail Arbor | Summerville, SC 29485



Floor 2

**TOTAL: 1715 sq. ft**

FLOOR 1: 1377 sq. ft, FLOOR 2: 338 sq. ft

EXCLUDED AREAS: PORCH: 35 sq. ft, SCREENED PORCH: 202 sq. ft, GARAGE: 446 sq. ft,  
FIREPLACE: 9 sq. ft, LOW CEILING: 9 sq. ft

Floor Plan Created By Cubicasa App. Measurements Deemed Highly Reliable But Not Guaranteed.

