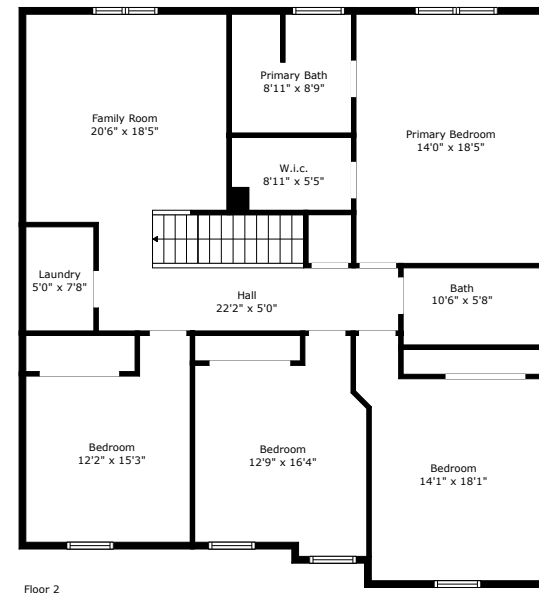
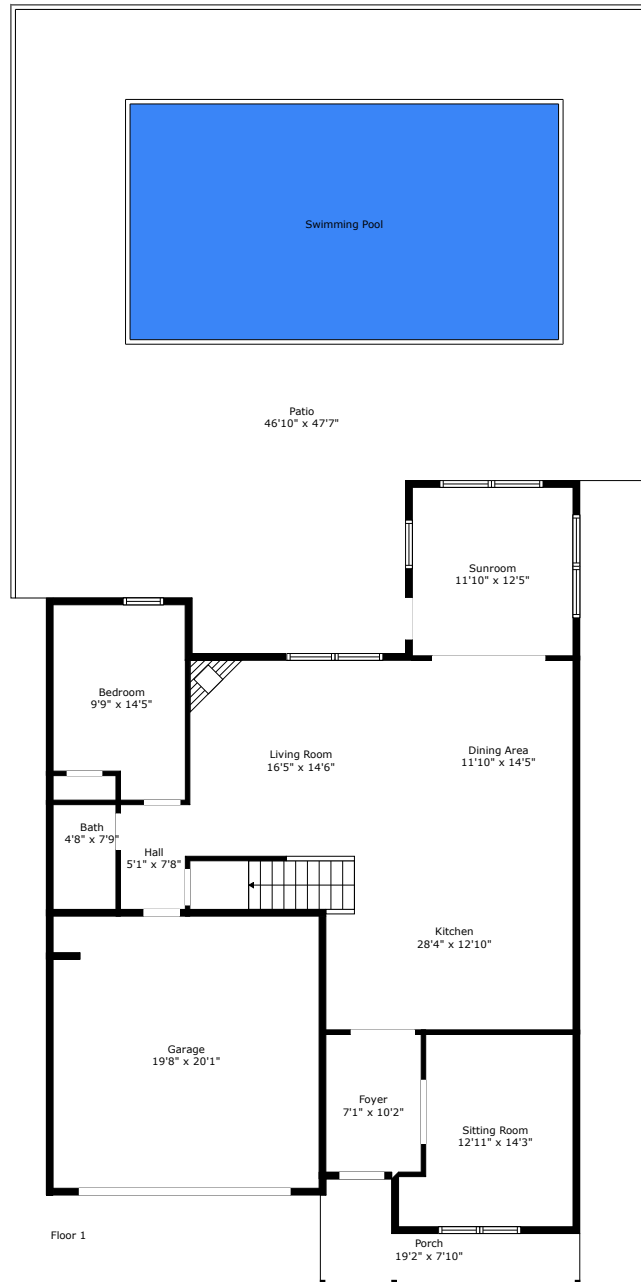


3040 Vincent Astor Drive

Oakfield | Johns Island, SC 29455



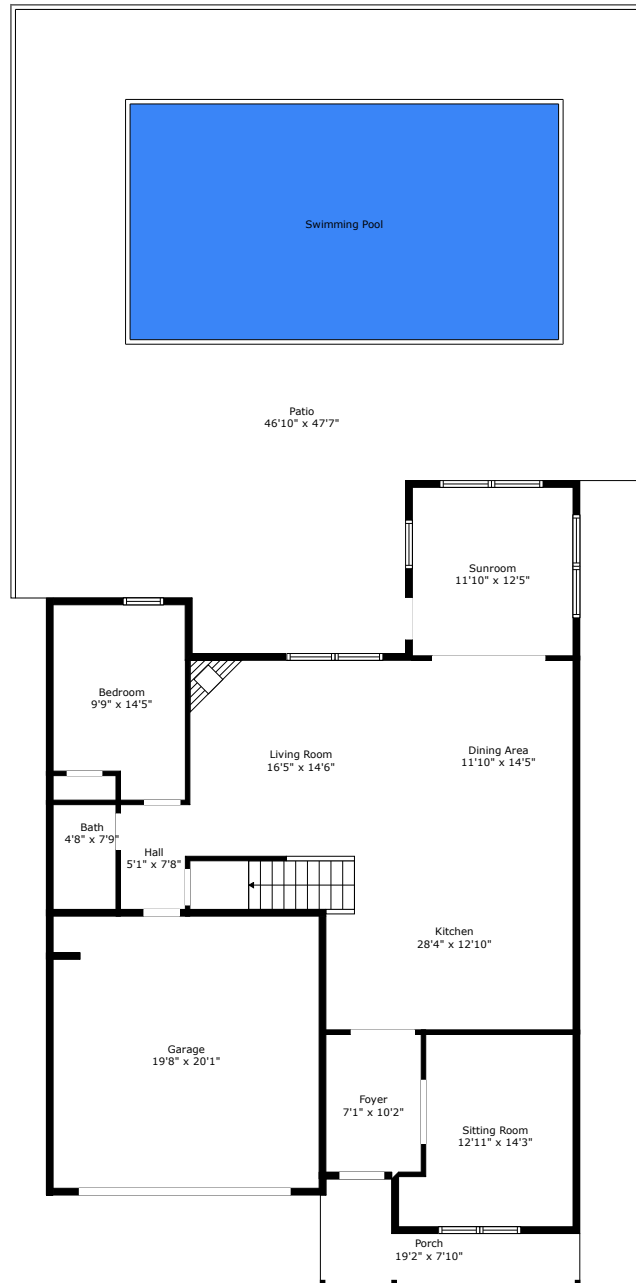
TOTAL: 2848 sq. ft
FLOOR 1: 1306 sq. ft, FLOOR 2: 1542 sq. ft
EXCLUDED AREAS: GARAGE: 394 sq. ft, PORCH: 93 sq. ft, PATIO: 1393 sq. ft

Floor Plan Created By Cubicasa App. Measurements Deemed Highly Reliable But Not Guaranteed.



3040 Vincent Astor Drive

Oakfield | Johns Island, SC 29455



Floor 1

TOTAL: 2848 sq. ft

FLOOR 1: 1306 sq. ft, FLOOR 2: 1542 sq. ft

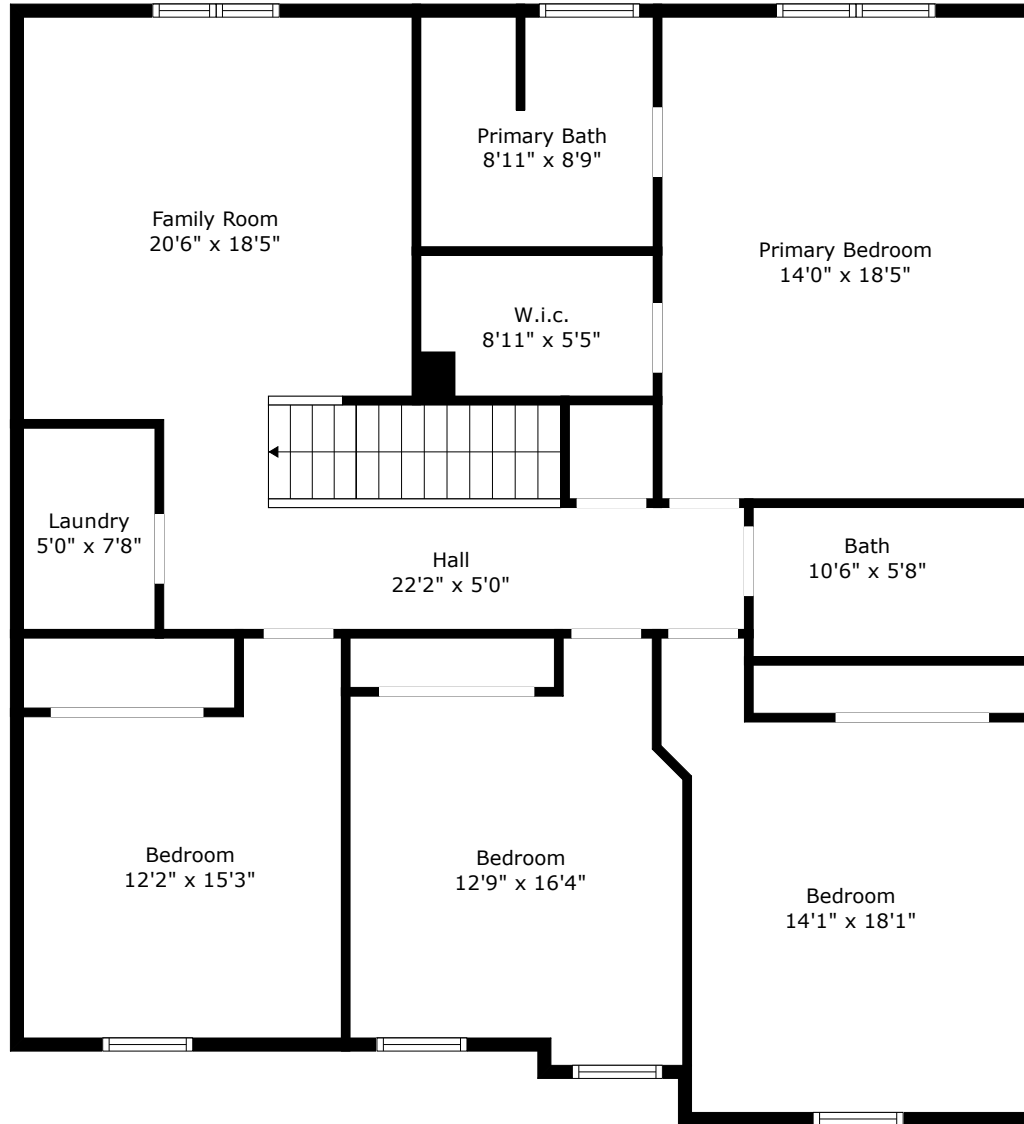
EXCLUDED AREAS: GARAGE: 394 sq. ft, PORCH: 93 sq. ft, PATIO: 1393 sq. ft

Floor Plan Created by Cubicasa App. Measurements Deemed Highly Reliable But Not Guaranteed.



3040 Vincent Astor Drive

Oakfield | Johns Island, SC 29455



Floor 2

TOTAL: 2848 sq. ft

FLOOR 1: 1306 sq. ft, FLOOR 2: 1542 sq. ft

EXCLUDED AREAS: GARAGE: 394 sq. ft, PORCH: 93 sq. ft, PATIO: 1393 sq. ft

Floor Plan Created By Cubicasa App. Measurements Deemed Highly Reliable But Not Guaranteed.

