

110 Dacs Lane

Shepard Park | Summerville, SC 29483



TOTAL: 2075 sq. ft
FLOOR 1: 2075 sq. ft, FLOOR 2: 0 sq. ft
EXCLUDED AREAS: DECK: 208 sq. ft, PORCH: 223 sq. ft, GARAGE: 619 sq. ft,
FIREPLACE: 10 sq. ft, LOW CEILING: 102 sq. ft, ATTIC: 365 sq. ft

Floor Plan Created By Cubicasa App. Measurements Deemed Highly Reliable But Not Guaranteed.



110 Dacs Lane

Shepard Park | Summerville, SC 29483



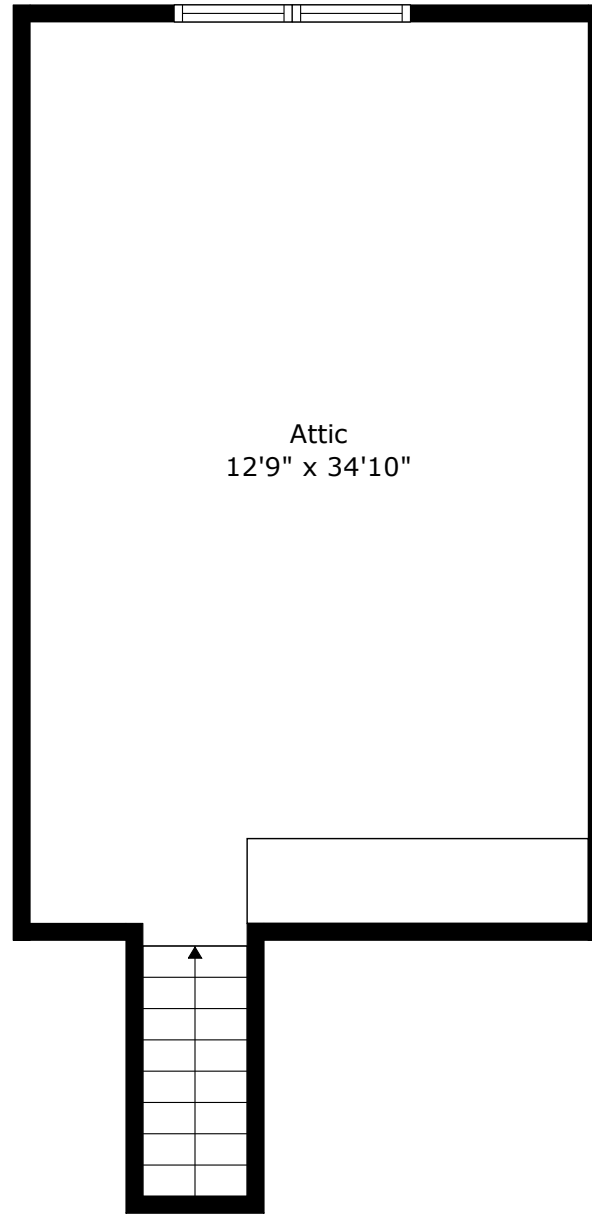
Floor 1

TOTAL: 2075 sq. ft
FLOOR 1: 2075 sq. ft, FLOOR 2: 0 sq. ft
EXCLUDED AREAS: DECK: 208 sq. ft, PORCH: 223 sq. ft, GARAGE: 619 sq. ft,
FIREPLACE: 10 sq. ft, LOW CEILING: 102 sq. ft, ATTIC: 365 sq. ft

Floor Plan Created by Cubicasa App. Measurements Deemed Highly Reliable But Not Guaranteed.



110 Dacs Lane
Shepard Park | Summerville, SC 29483



Floor 2

TOTAL: 2075 sq. ft
FLOOR 1: 2075 sq. ft, FLOOR 2: 0 sq. ft
EXCLUDED AREAS: DECK: 208 sq. ft, PORCH: 223 sq. ft, GARAGE: 619 sq. ft,
FIREPLACE: 10 sq. ft, LOW CEILING: 102 sq. ft, ATTIC: 365 sq. ft

