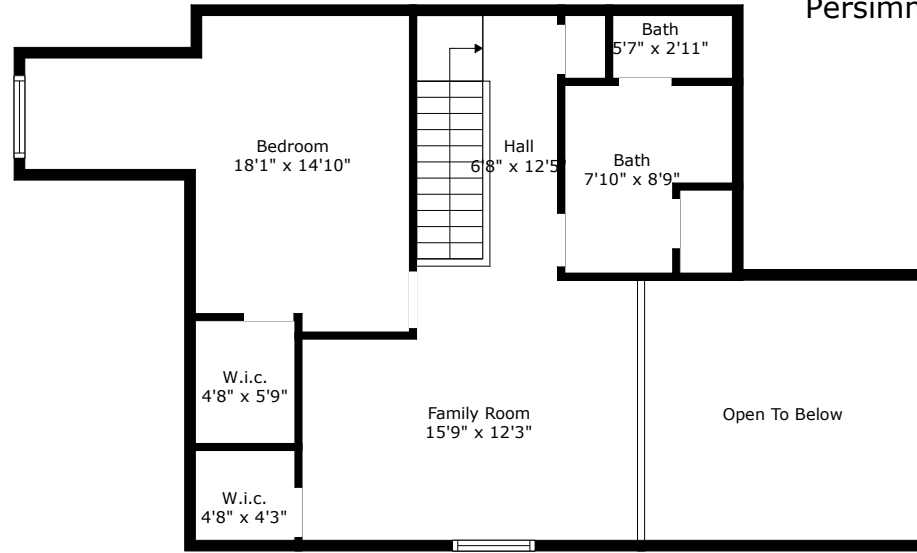
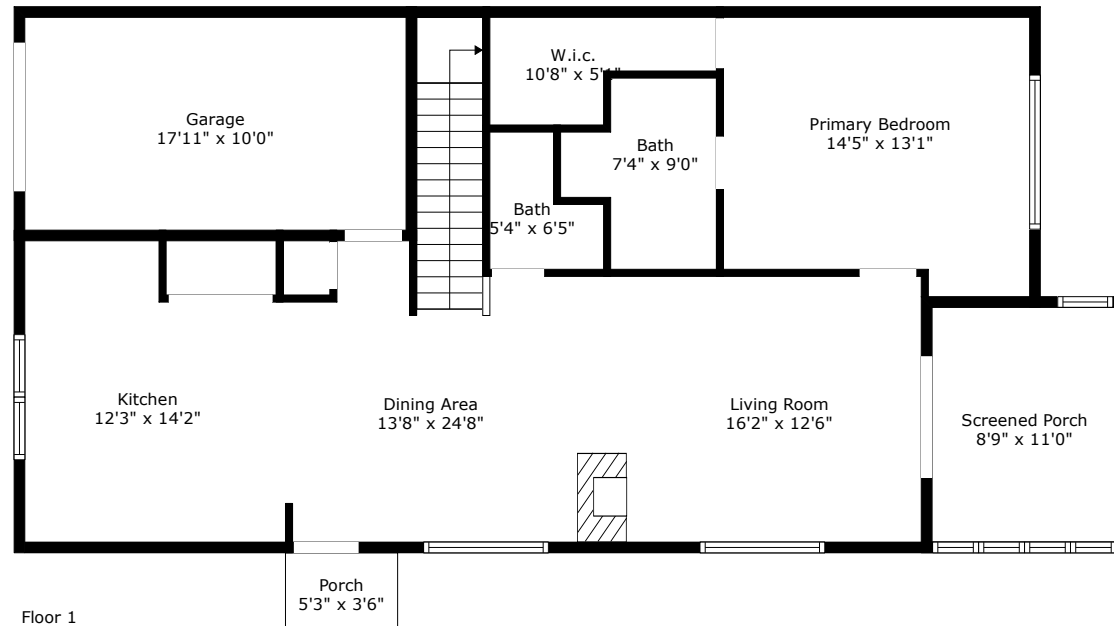


232 Darcy Avenue

Persimmon Hill Townhouses | Goose Creek, SC 29445



Floor 2



Floor 1

TOTAL: 1527 sq. ft

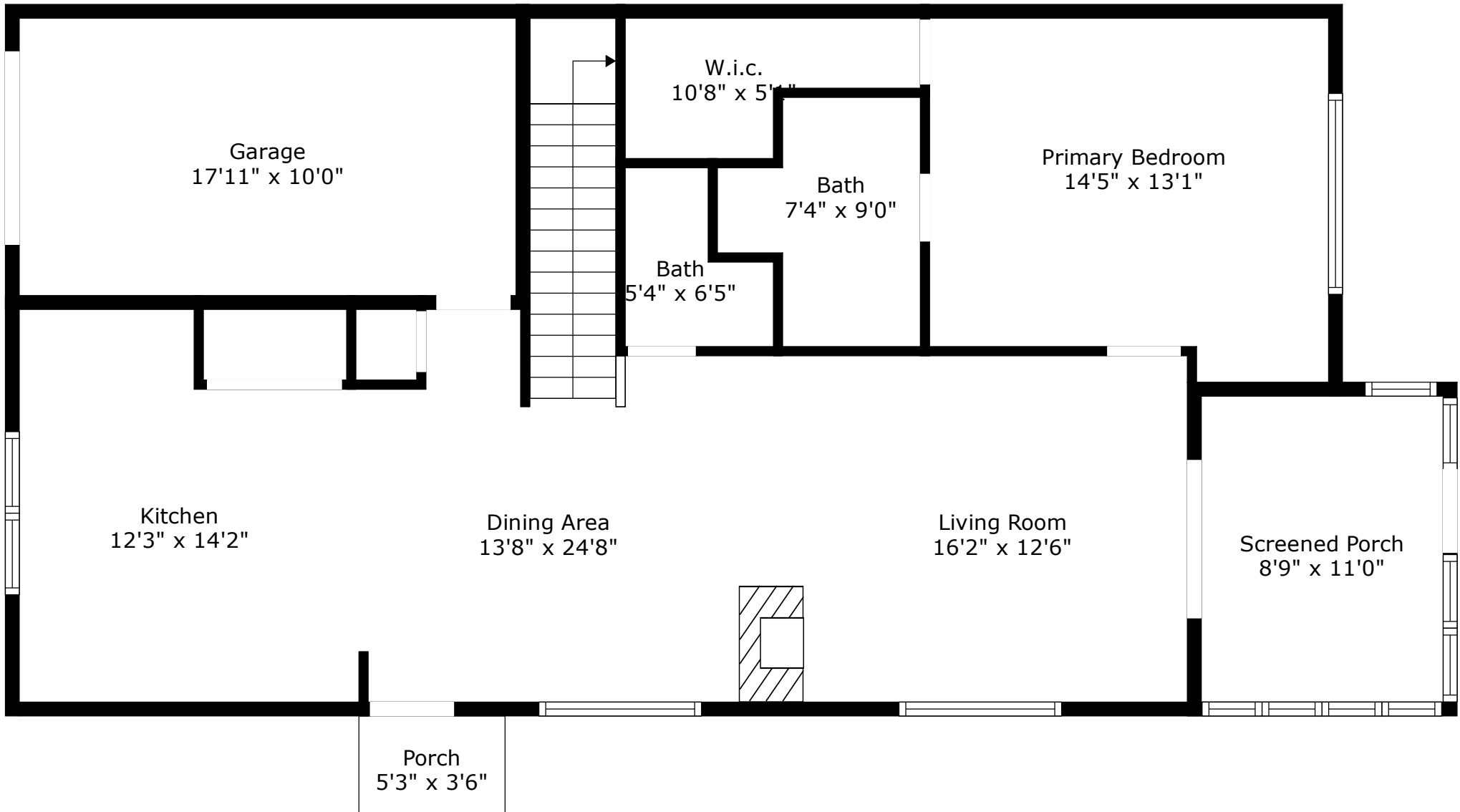
FLOOR 1: 913 sq. ft, FLOOR 2: 614 sq. ft

EXCLUDED AREAS: SCREENED PORCH: 96 sq. ft, PORCH: 19 sq. ft, GARAGE: 179 sq. ft, OPEN TO BELOW: 159 sq. ft



232 Darcy Avenue

Persimmon Hill Townhouses | Goose Creek, SC 29445



Floor 1

TOTAL: 1527 sq. ft

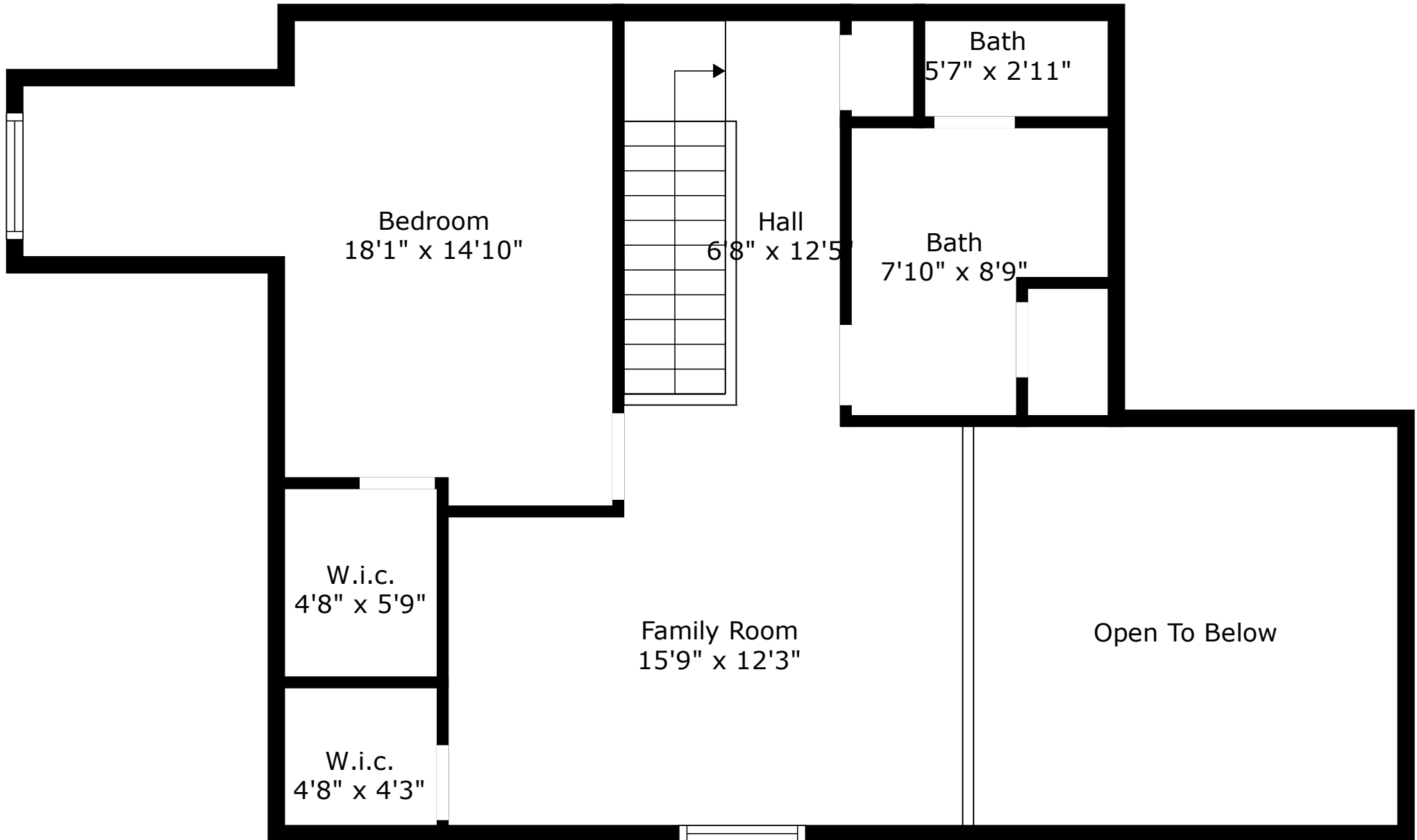
FLOOR 1: 913 sq. ft, FLOOR 2: 614 sq. ft

EXCLUDED AREAS: SCREENED PORCH: 96 sq. ft, PORCH: 19 sq. ft, GARAGE: 179 sq. ft,
OPEN TO BELOW: 159 sq. ft



232 Darcy Avenue

Persimmon Hill Townhouses | Goose Creek, SC 29445



Floor 2

TOTAL: 1527 sq. ft

FLOOR 1: 913 sq. ft, FLOOR 2: 614 sq. ft

EXCLUDED AREAS: SCREENED PORCH: 96 sq. ft, PORCH: 19 sq. ft, GARAGE: 179 sq. ft,

OPEN TO BELOW: 159 sq. ft

