

1269 Smythe Street

Daniel Island | Charleston, SC 29492



FLOOR 1

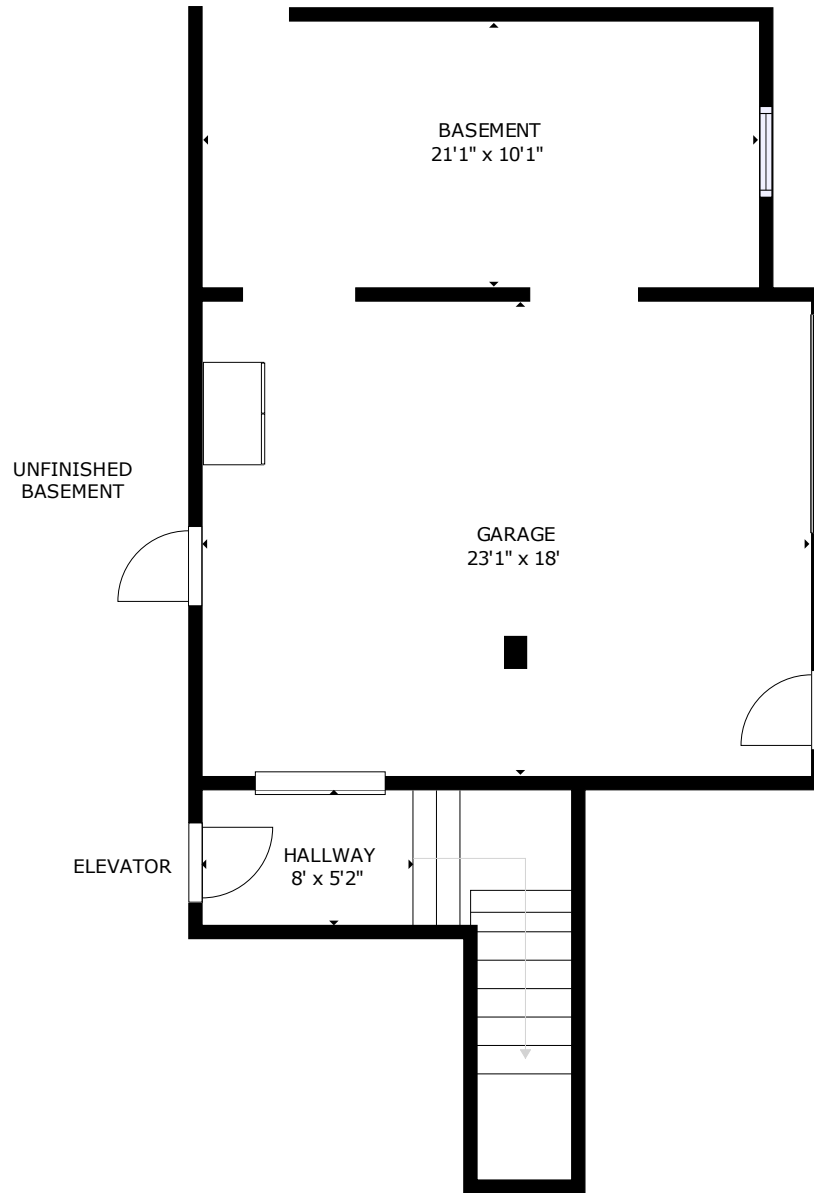
FLOOR 2

FLOOR 3

GROSS INTERNAL AREA
 FLOOR 1: 321 sq ft, FLOOR 2: 2135 sq ft, FLOOR 3: 1361 sq ft
 EXCLUDED AREAS;
 GARAGE: 418 sq ft, PORCH: 240 sq ft, BALCONY: 230 sq ft
 TOTAL: 3817 sq ft
 SIZES AND DIMENSIONS ARE APPROXIMATE, ACTUAL MAY VARY.

1269 Smythe Street

Daniel Island | Charleston, SC 29492

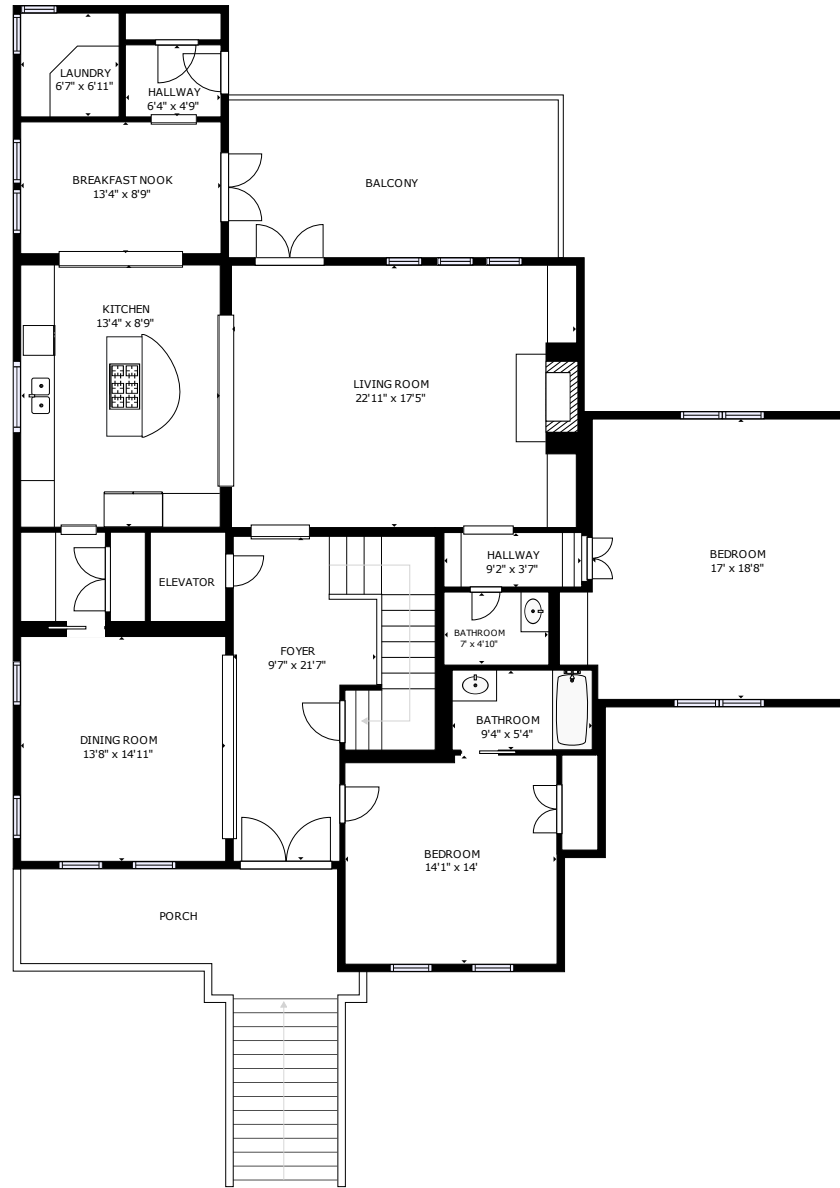


FLOOR 1

GROSS INTERNAL AREA
FLOOR 1: 321 sq ft, FLOOR 2: 2135 sq ft, FLOOR 3: 1361 sq ft
EXCLUDED AREAS;
GARAGE: 418 sq ft, PORCH: 240 sq ft, BALCONY: 230 sq ft
TOTAL: 3817 sq ft
SIZES AND DIMENSIONS ARE APPROXIMATE, ACTUAL MAY VARY.

1269 Smythe Street

Daniel Island | Charleston, SC 29492

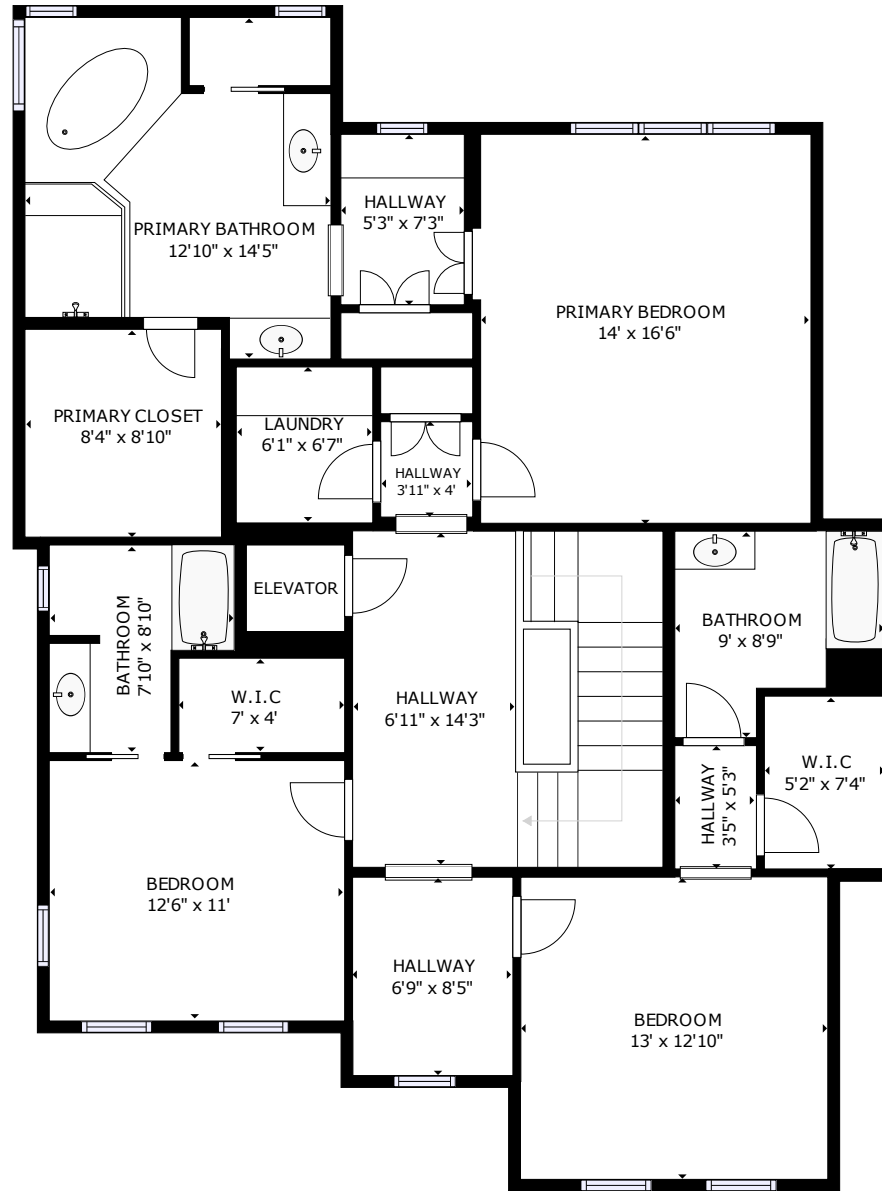


FLOOR 2

GROSS INTERNAL AREA
FLOOR 1: 321 sq ft, FLOOR 2: 2135 sq ft, FLOOR 3: 1361 sq ft
EXCLUDED AREAS;
GARAGE: 418 sq ft, PORCH: 240 sq ft, BALCONY: 230 sq ft
TOTAL: 3817 sq ft
SIZES AND DIMENSIONS ARE APPROXIMATE, ACTUAL MAY VARY.

1269 Smythe Street

Daniel Island | Charleston, SC 29492



FLOOR 3

GROSS INTERNAL AREA
FLOOR 1: 321 sq ft, FLOOR 2: 2135 sq ft, FLOOR 3: 1361 sq ft
EXCLUDED AREAS;
GARAGE: 418 sq ft, PORCH: 240 sq ft, BALCONY: 230 sq ft
TOTAL: 3817 sq ft

SIZES AND DIMENSIONS ARE APPROXIMATE, ACTUAL MAY VARY.