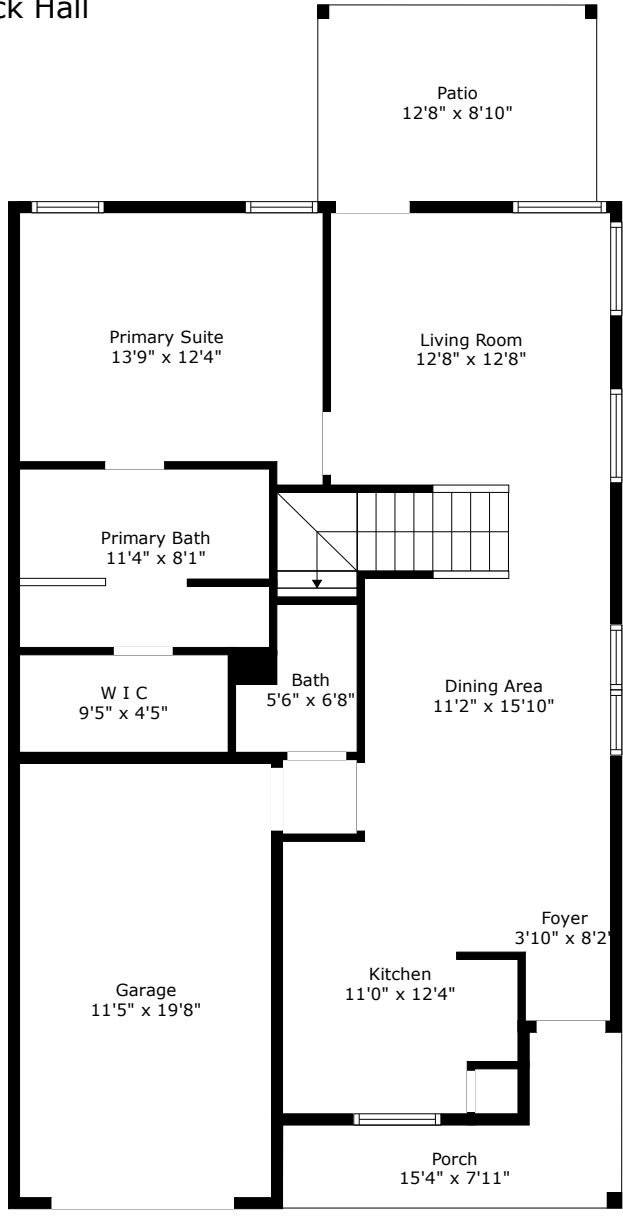
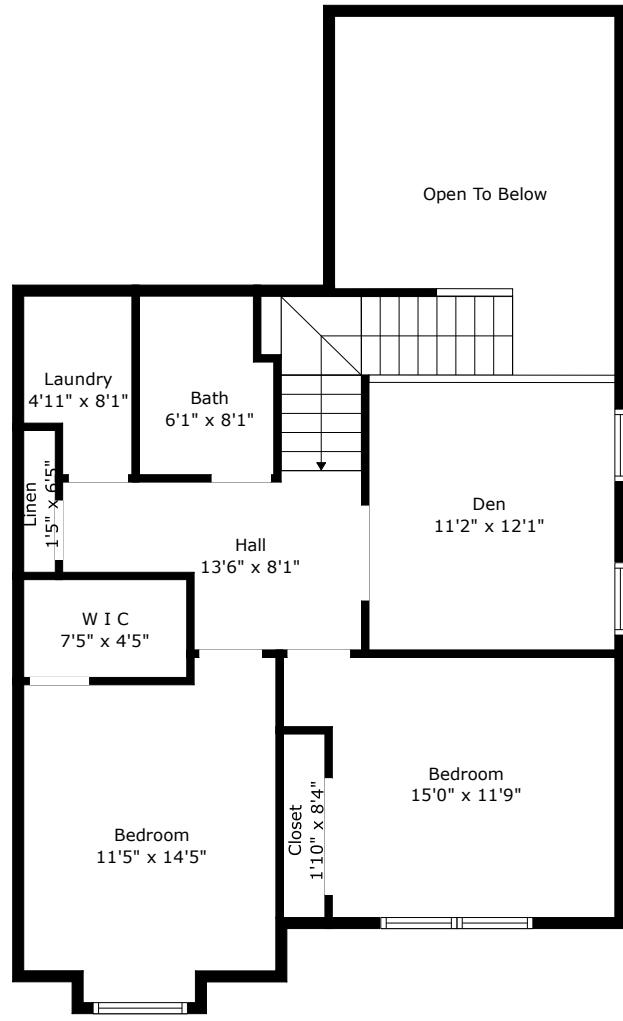


1151 St Pauls Parrish Lane

The Commons at Fenwick Hall
Johns Island, SC 29455



Floor 1



Floor 2

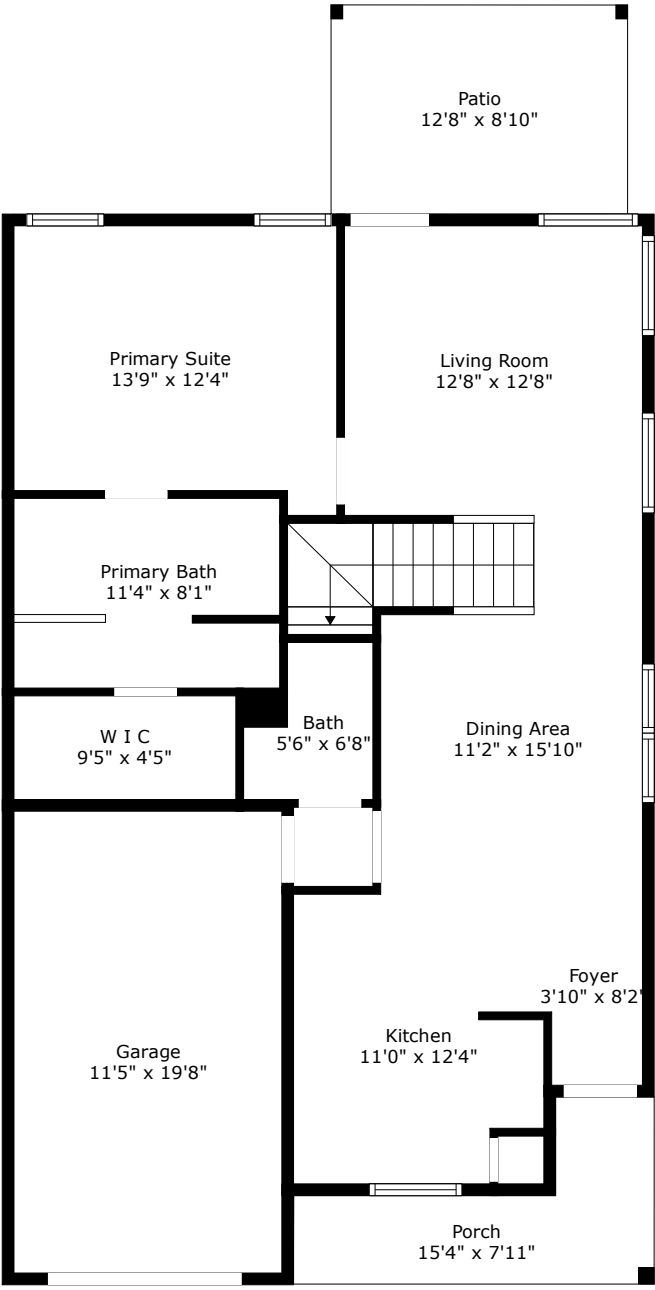
TOTAL: 1656 sq. ft
FLOOR 1: 881 sq. ft, FLOOR 2: 775 sq. ft
EXCLUDED AREAS: PORCH: 76 sq. ft, PATIO: 113 sq. ft, GARAGE: 224 sq. ft,
OPEN TO BELOW: 175 sq. ft

Floor Plan Created By Cubicasa App. Measurements Deemed Highly Reliable But Not Guaranteed.



1151 St Pauls Parrish Lane

The Commons at Fenwick Hall
Johns Island, SC 29455



Floor 1

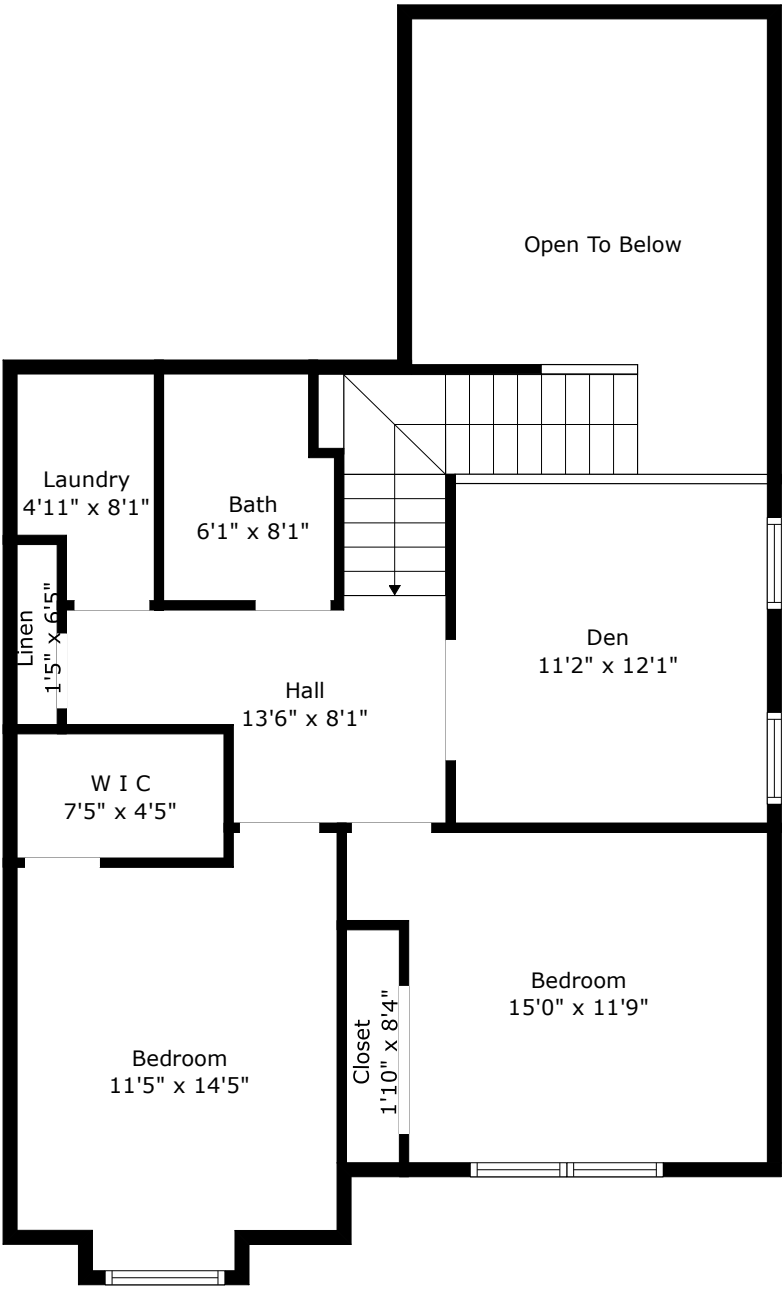
TOTAL: 1656 sq. ft
FLOOR 1: 881 sq. ft, FLOOR 2: 775 sq. ft
EXCLUDED AREAS: PORCH: 76 sq. ft, PATIO: 113 sq. ft, GARAGE: 224 sq. ft,
OPEN TO BELOW: 175 sq. ft

Floor Plan Created By Cubicasa App. Measurements Deemed Highly Reliable But Not Guaranteed.



1151 St Pauls Parrish Lane

The Commons at Fenwick Hall
Johns Island, SC 29455



Floor 2

TOTAL: 1656 sq. ft
FLOOR 1: 881 sq. ft, FLOOR 2: 775 sq. ft
EXCLUDED AREAS: PORCH: 76 sq. ft, PATIO: 113 sq. ft, GARAGE: 224 sq. ft,
OPEN TO BELOW: 175 sq. ft

Floor Plan Created By Cubicasa App. Measurements Deemed Highly Reliable But Not Guaranteed.

