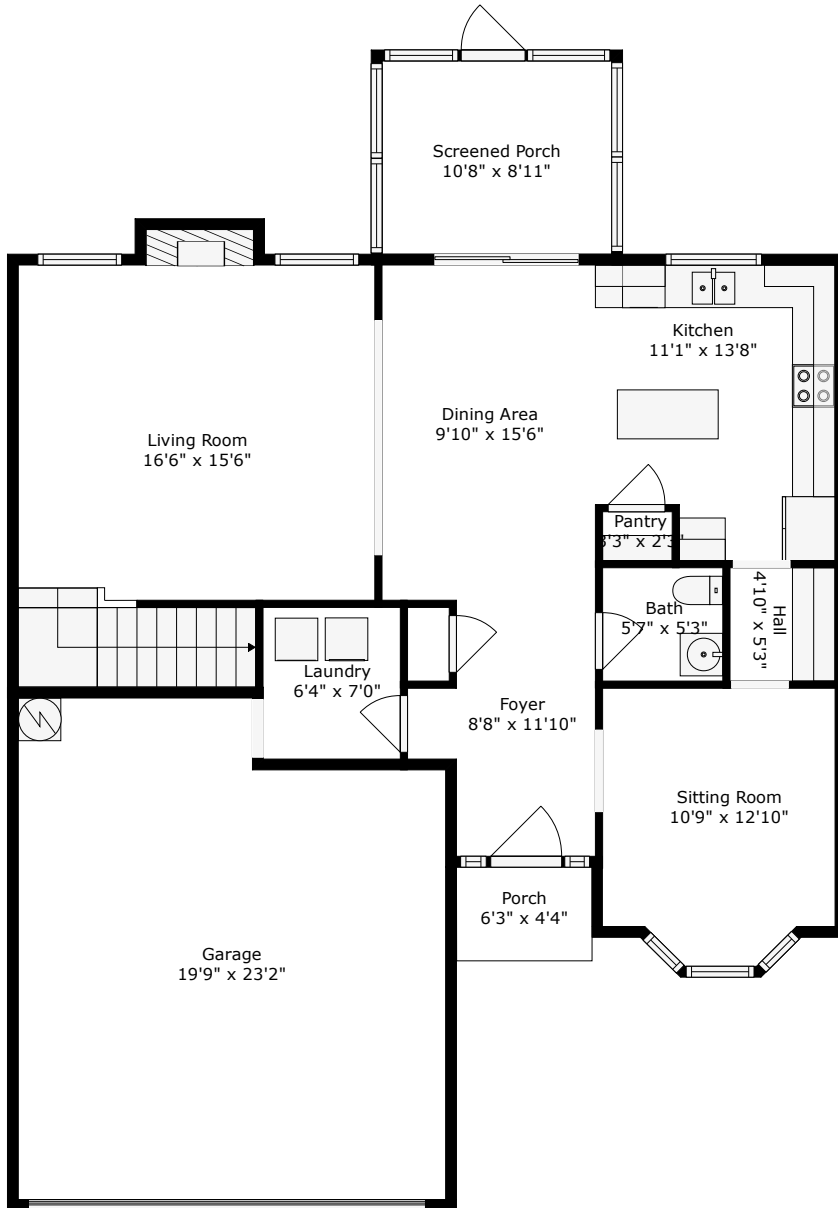
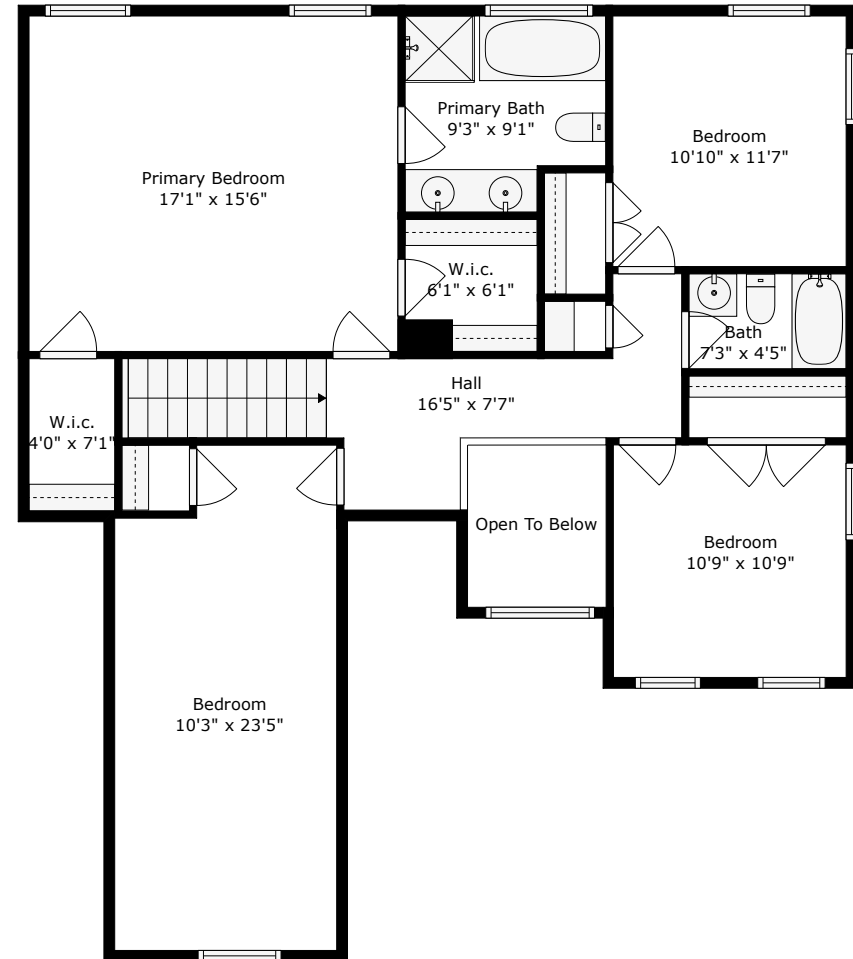


1034 Sterling Lane

The Glen at Somerset
Summerville, SC 29483



Floor 1



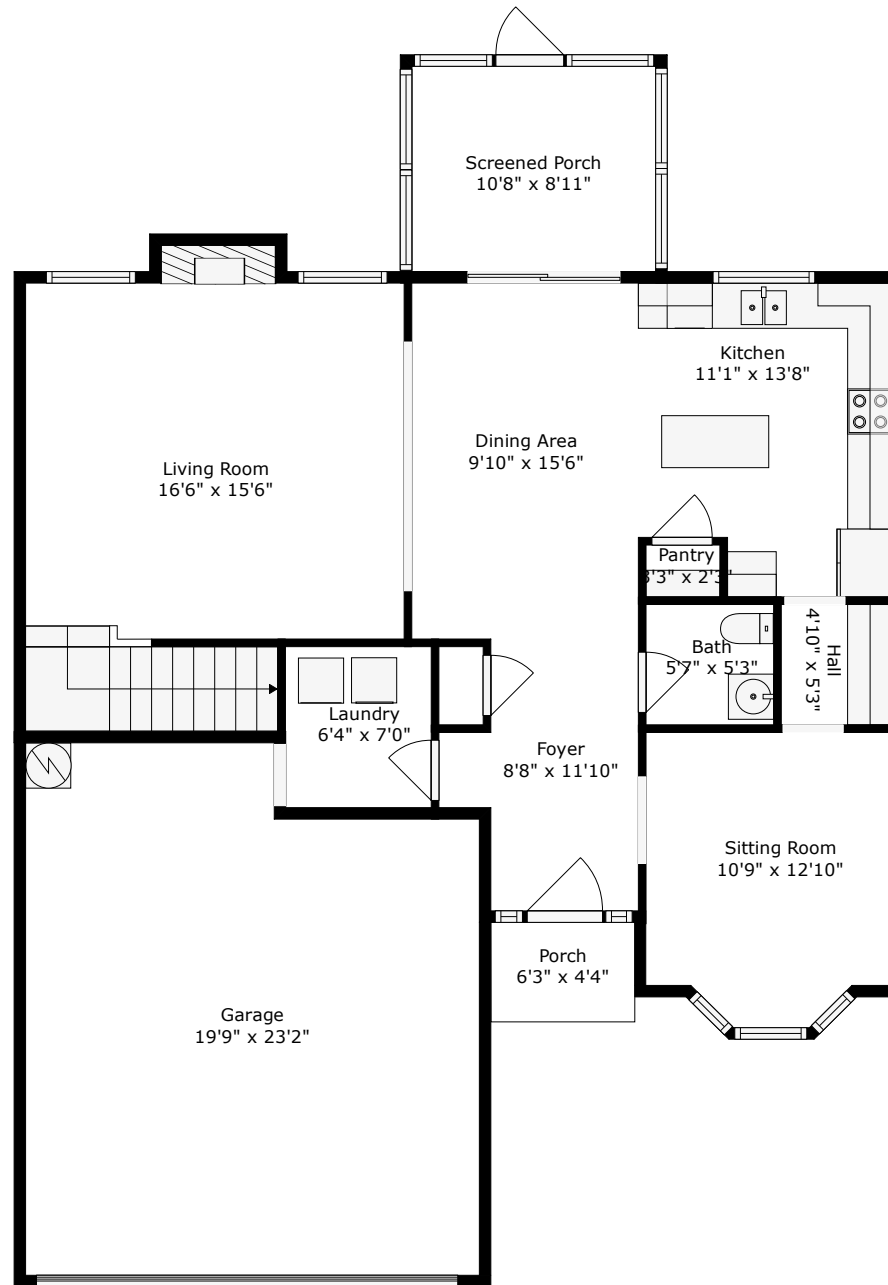
Floor 2

TOTAL: 2094 sq. ft
FLOOR 1: 953 sq. ft, FLOOR 2: 1141 sq. ft
EXCLUDED AREAS: GARAGE: 429 sq. ft, SCREENED PORCH: 95 sq. ft, PORCH: 27 sq. ft,
FIREPLACE: 10 sq. ft, OPEN TO BELOW: 48 sq. ft



1034 Sterling Lane

The Glen at Summerset
Summerville, SC 29483



Floor 1

TOTAL: 2094 sq. ft

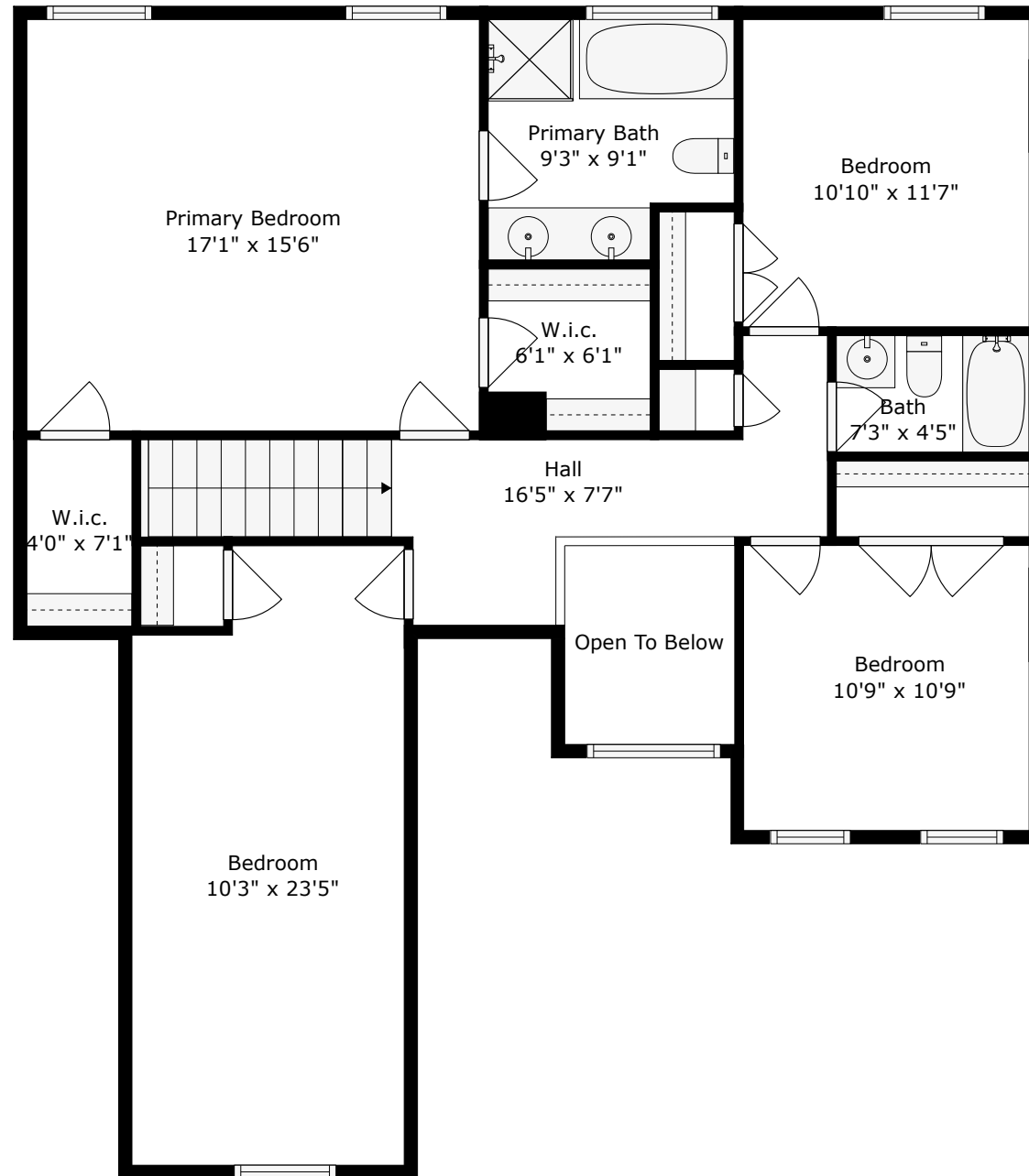
FLOOR 1: 953 sq. ft, FLOOR 2: 1141 sq. ft

EXCLUDED AREAS: GARAGE: 429 sq. ft, SCREENED PORCH: 95 sq. ft, PORCH: 27 sq. ft,
FIREPLACE: 10 sq. ft, OPEN TO BELOW: 48 sq. ft



1034 Sterling Lane

The Glen at Summerset
Summerville, SC 29483



Floor 2

TOTAL: 2094 sq. ft

FLOOR 1: 953 sq. ft, FLOOR 2: 1141 sq. ft

EXCLUDED AREAS: GARAGE: 429 sq. ft, SCREENED PORCH: 95 sq. ft, PORCH: 27 sq. ft,
FIREPLACE: 10 sq. ft, OPEN TO BELOW: 48 sq. ft

