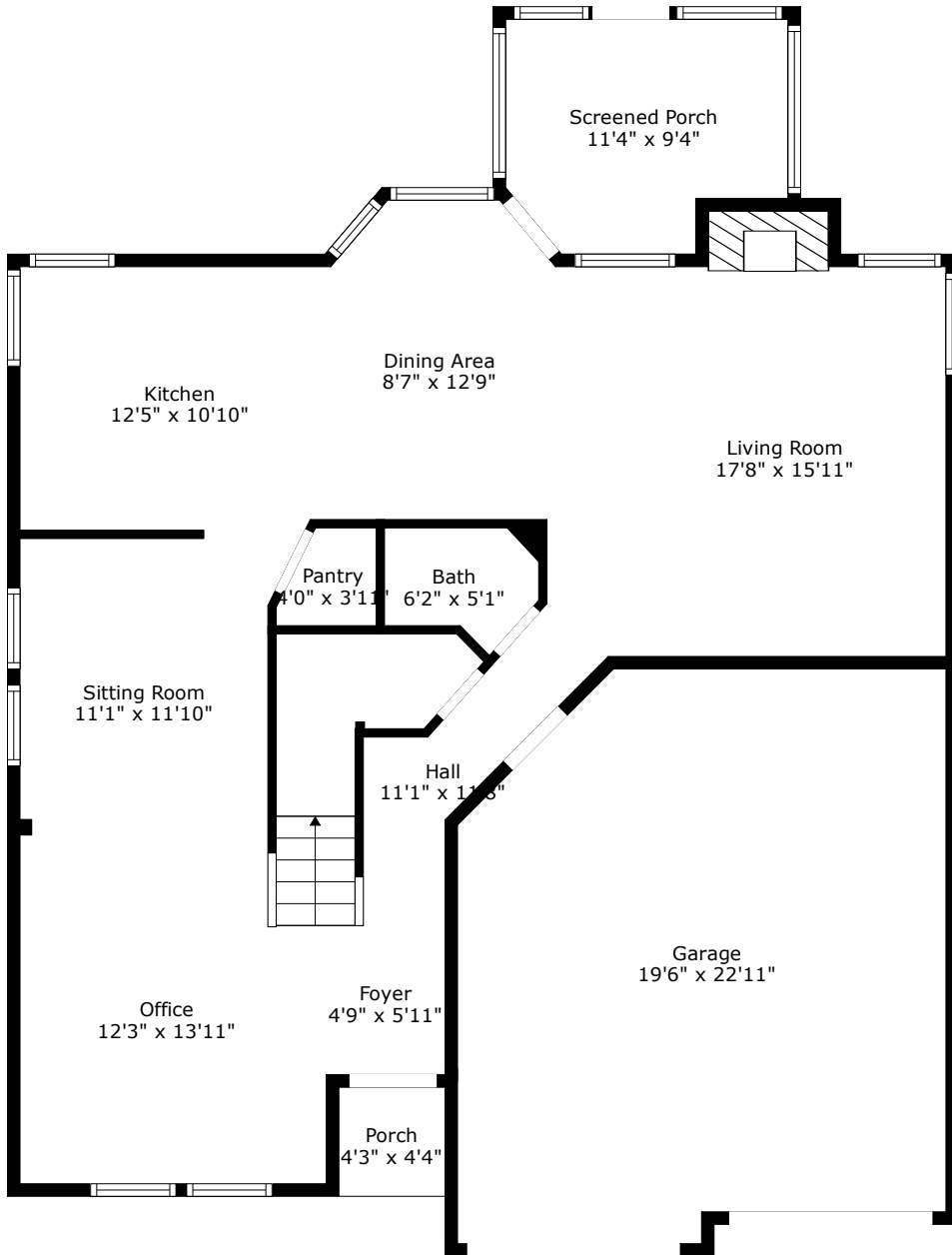
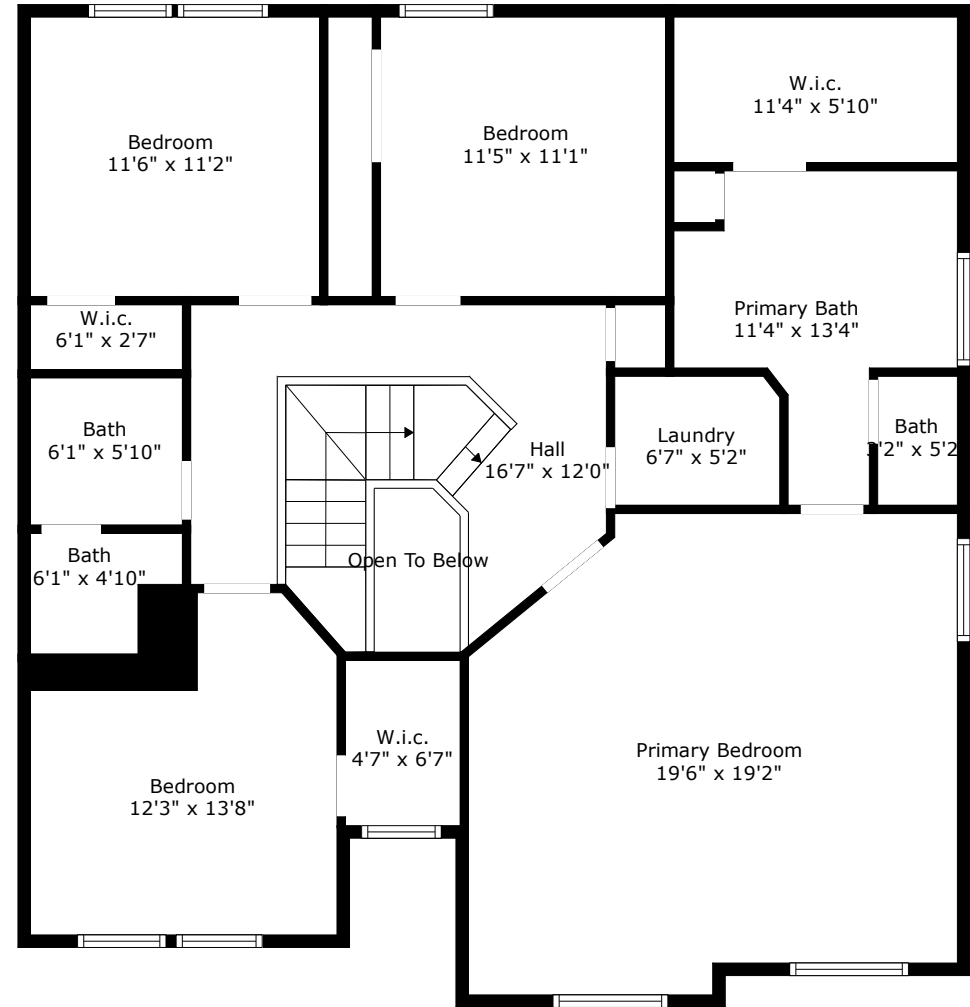


**3028 Argyll Drive**  
 The Glen at Somerset  
 Summerville, SC 29483



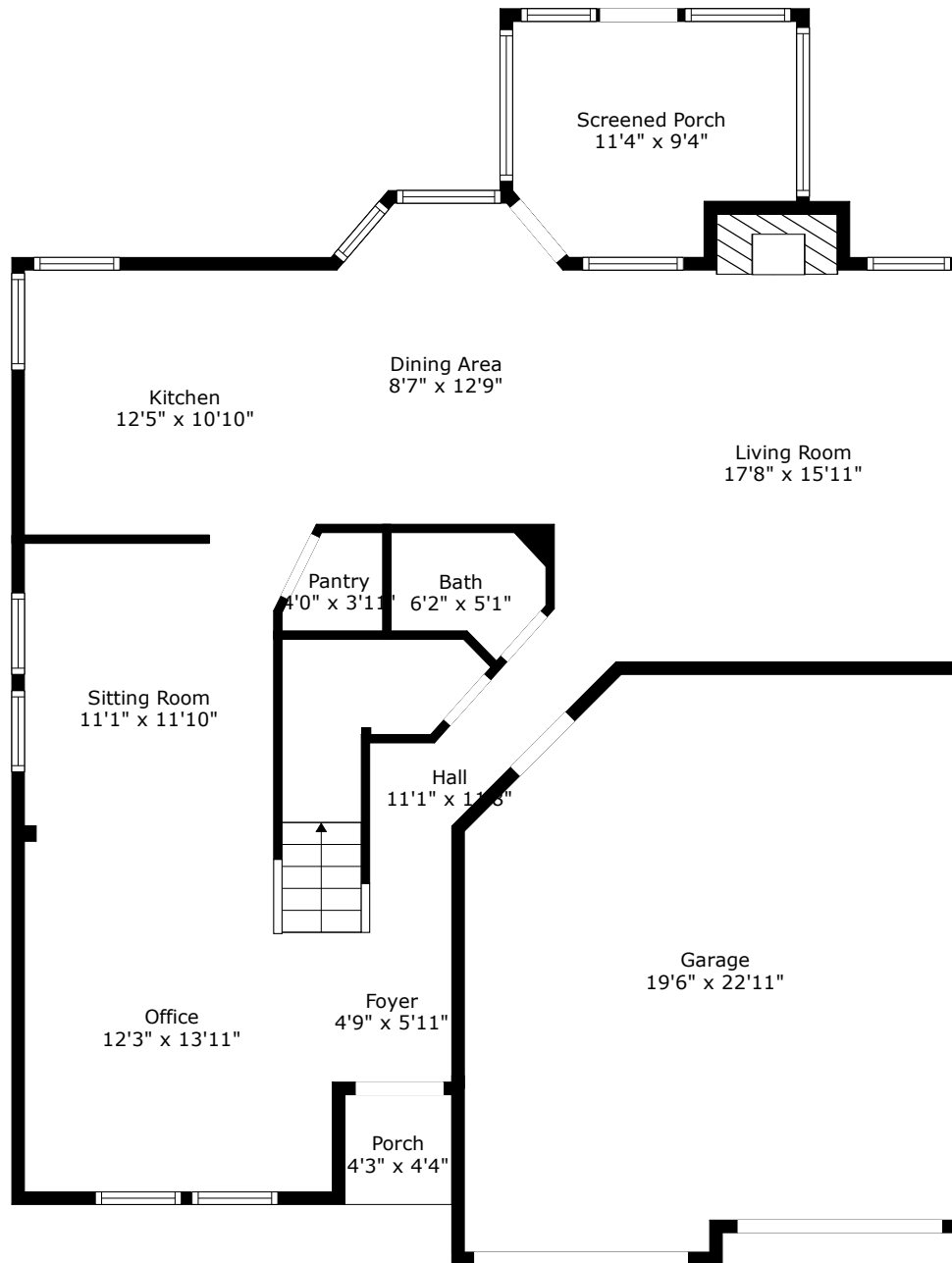
Floor 1



Floor 2

**TOTAL: 2304 sq. ft**  
 FLOOR 1: 956 sq. ft, FLOOR 2: 1348 sq. ft  
 EXCLUDED AREAS: GARAGE: 417 sq. ft, PORCH: 19 sq. ft, SCREENED PORCH: 95 sq. ft,  
 FIREPLACE: 13 sq. ft, OPEN TO BELOW: 22 sq. ft

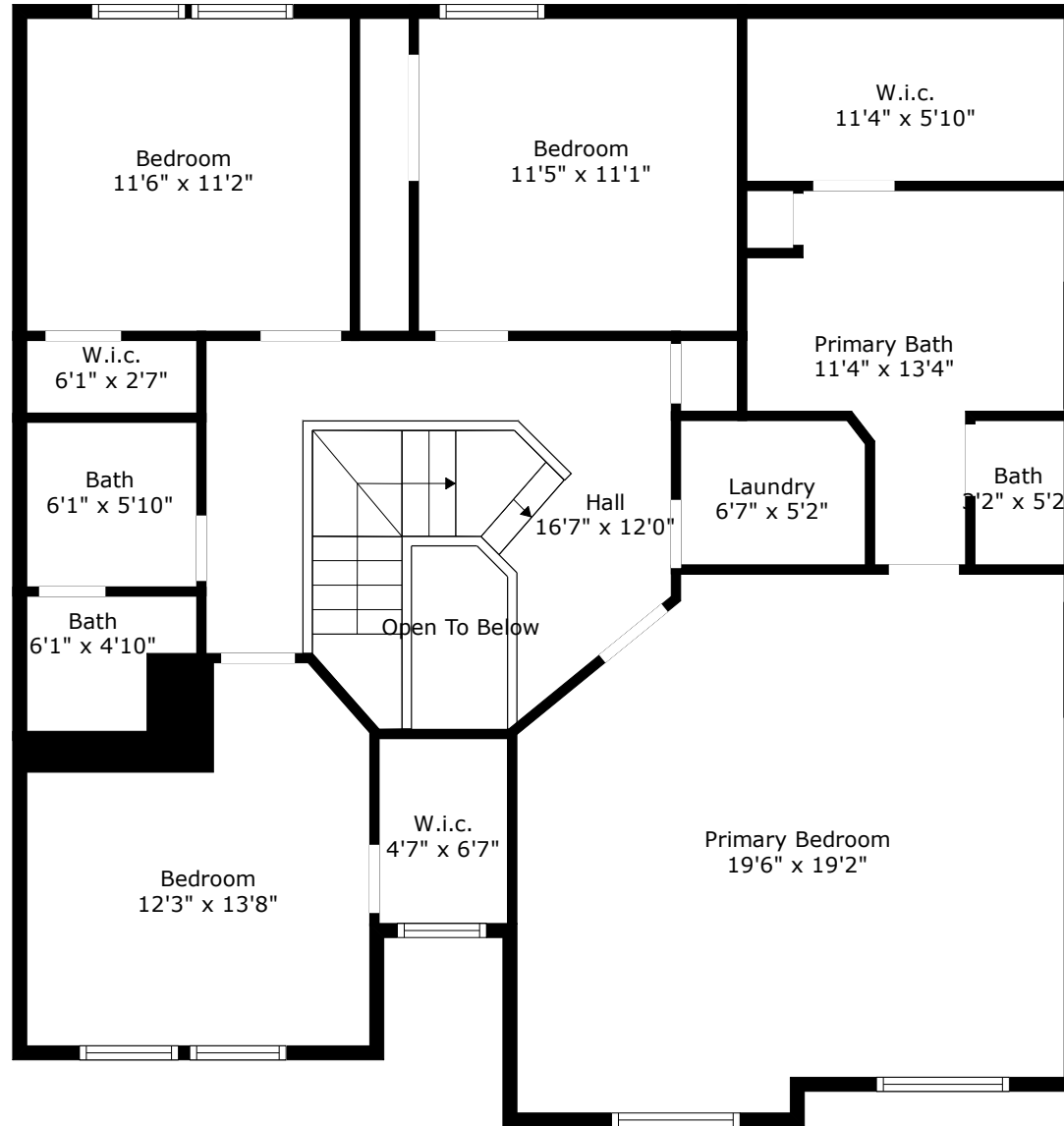




Floor 1

**TOTAL: 2304 sq. ft**  
FLOOR 1: 956 sq. ft, FLOOR 2: 1348 sq. ft  
EXCLUDED AREAS: GARAGE: 417 sq. ft, PORCH: 19 sq. ft, SCREENED PORCH: 95 sq. ft,  
FIREPLACE: 13 sq. ft, OPEN TO BELOW: 22 sq. ft





Floor 2

**TOTAL: 2304 sq. ft**  
FLOOR 1: 956 sq. ft, FLOOR 2: 1348 sq. ft  
EXCLUDED AREAS: GARAGE: 417 sq. ft, PORCH: 19 sq. ft, SCREENED PORCH: 95 sq. ft,  
FIREPLACE: 13 sq. ft, OPEN TO BELOW: 22 sq. ft

