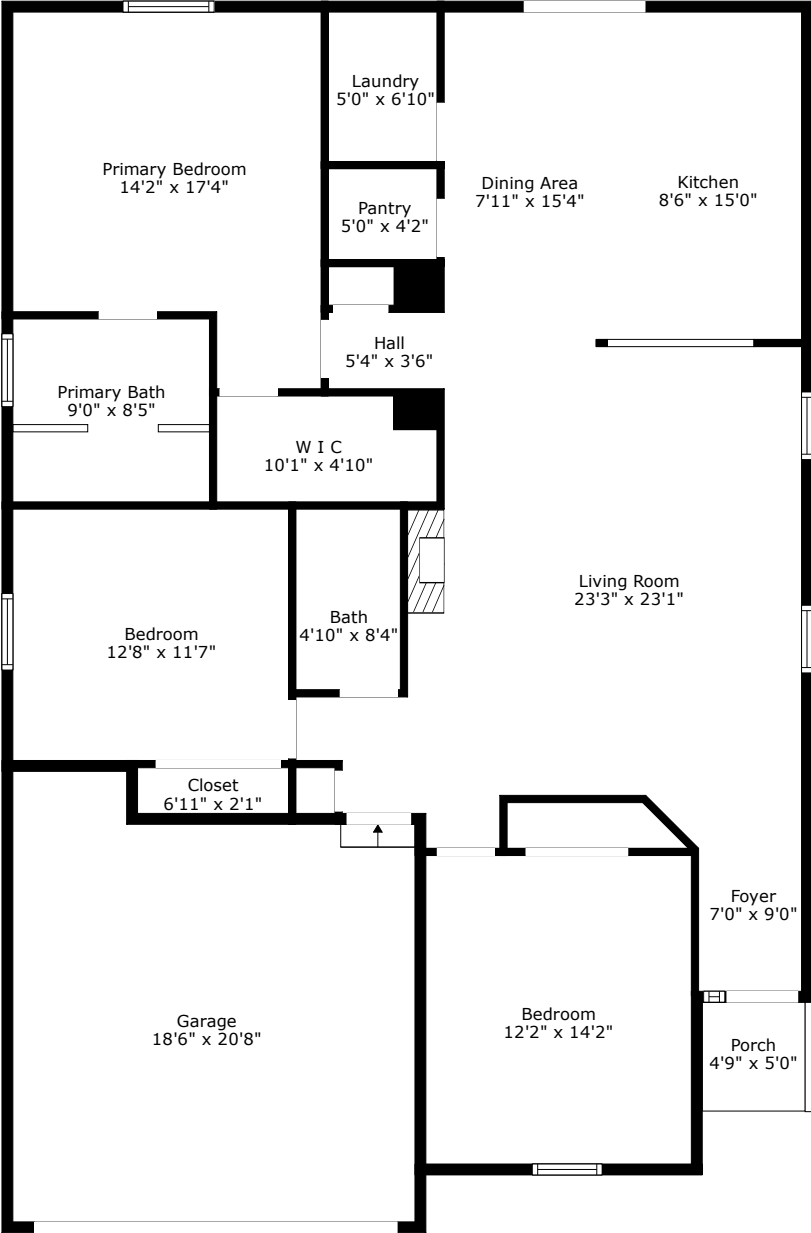


8054 Old Hazelwood Road

Park Hill Place | North Charleston, SC 29406



TOTAL: 1560 sq. ft

FLOOR 1: 1560 sq. ft

EXCLUDED AREAS: GARAGE: 350 sq. ft, PORCH: 24 sq. ft

Floor Plan Created By Cubicasa App. Measurements Deemed Highly Reliable But Not Guaranteed.

