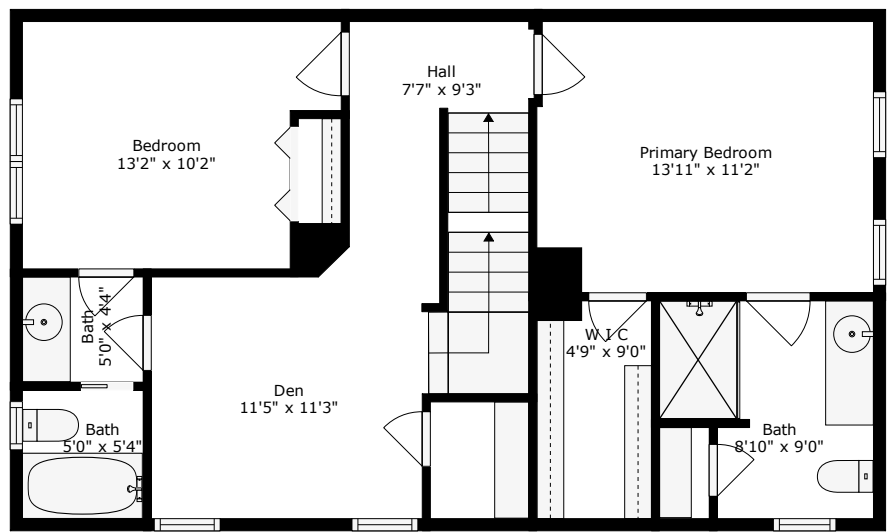
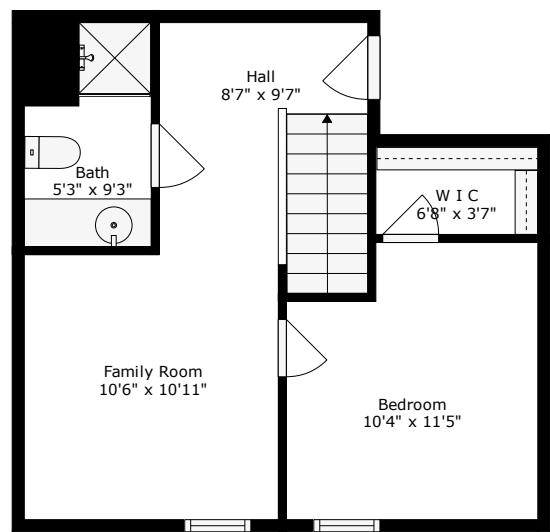


826 Rue Drive

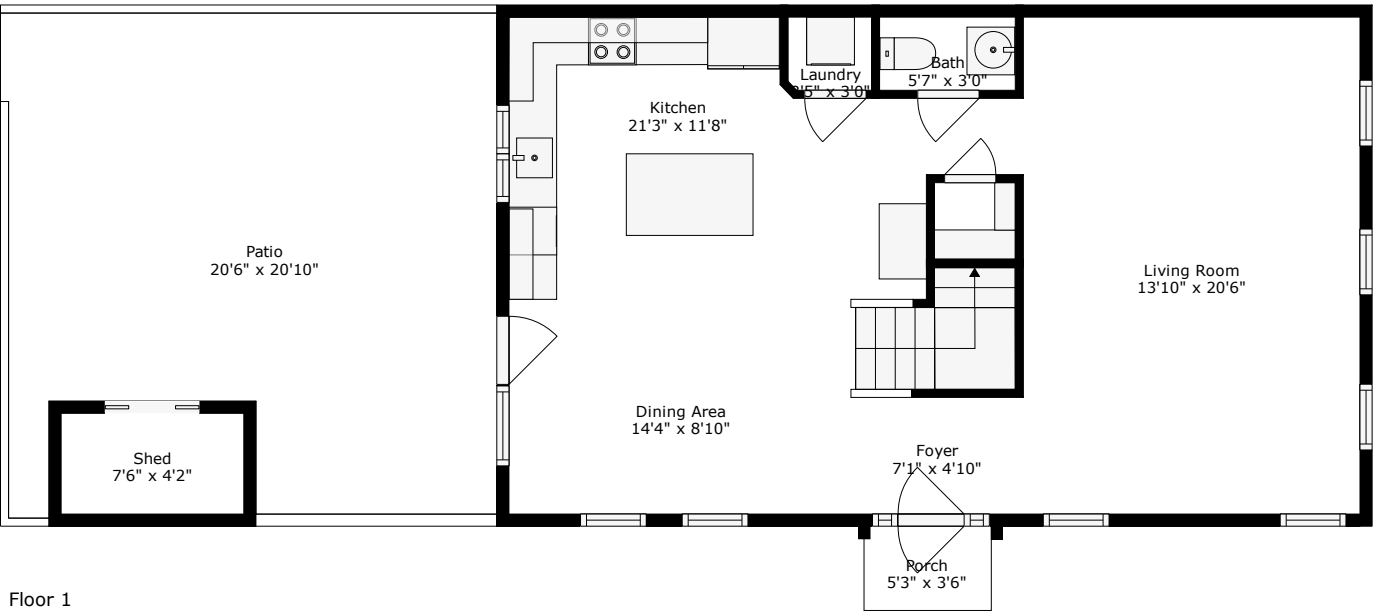
Grand Oaks Plantation | Charleston, SC 29414



Floor 2



Floor 3



Floor 1

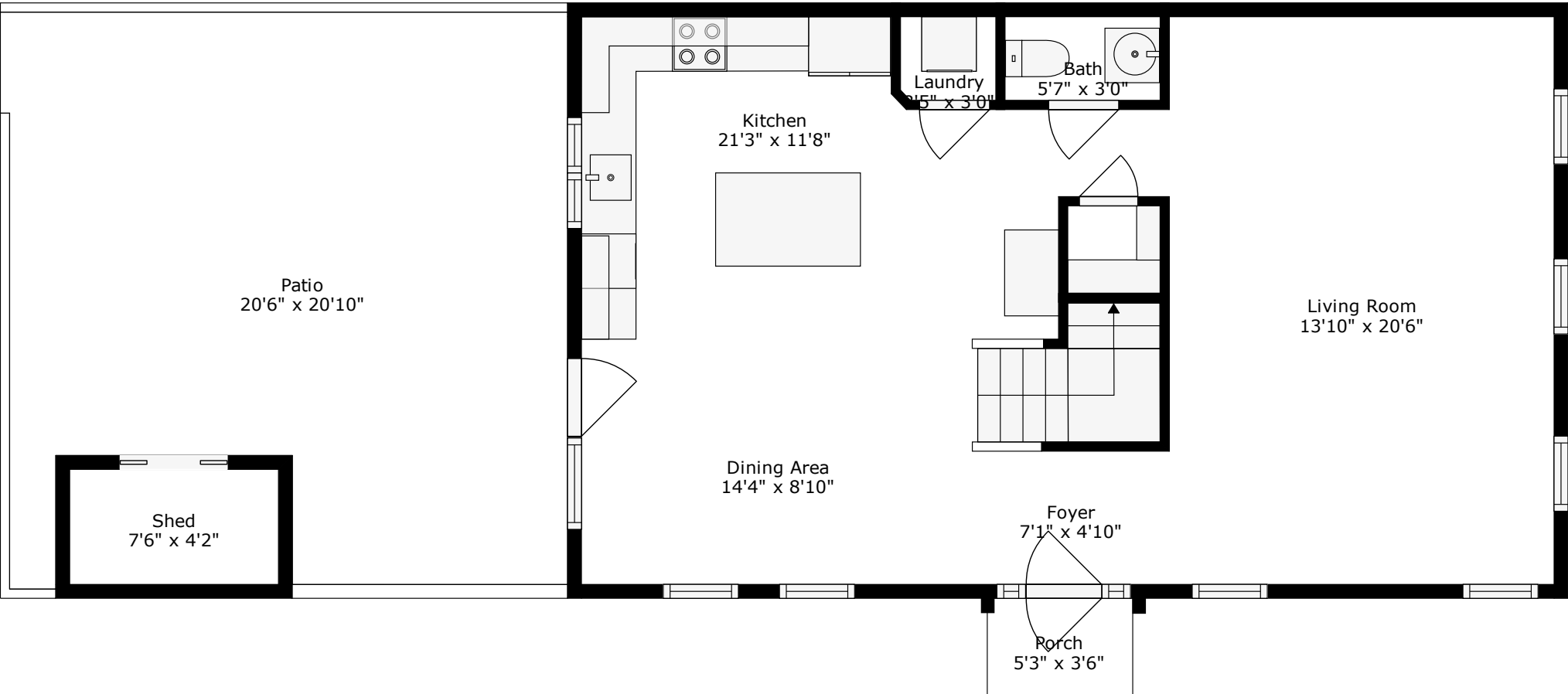
TOTAL: 1836 sq. ft
FLOOR 1: 720 sq. ft, FLOOR 2: 721 sq. ft, FLOOR 3: 395 sq. ft
EXCLUDED AREAS: PORCH: 18 sq. ft, PATIO: 378 sq. ft, SHED: 31 sq. ft,
LOW CEILING: 4 sq. ft

Floor Plan Created by Cubicasa App. Measurements Deemed Highly Reliable But Not Guaranteed.



826 Rue Drive

Grand Oaks Plantation | Charleston, SC 29414



Floor 1

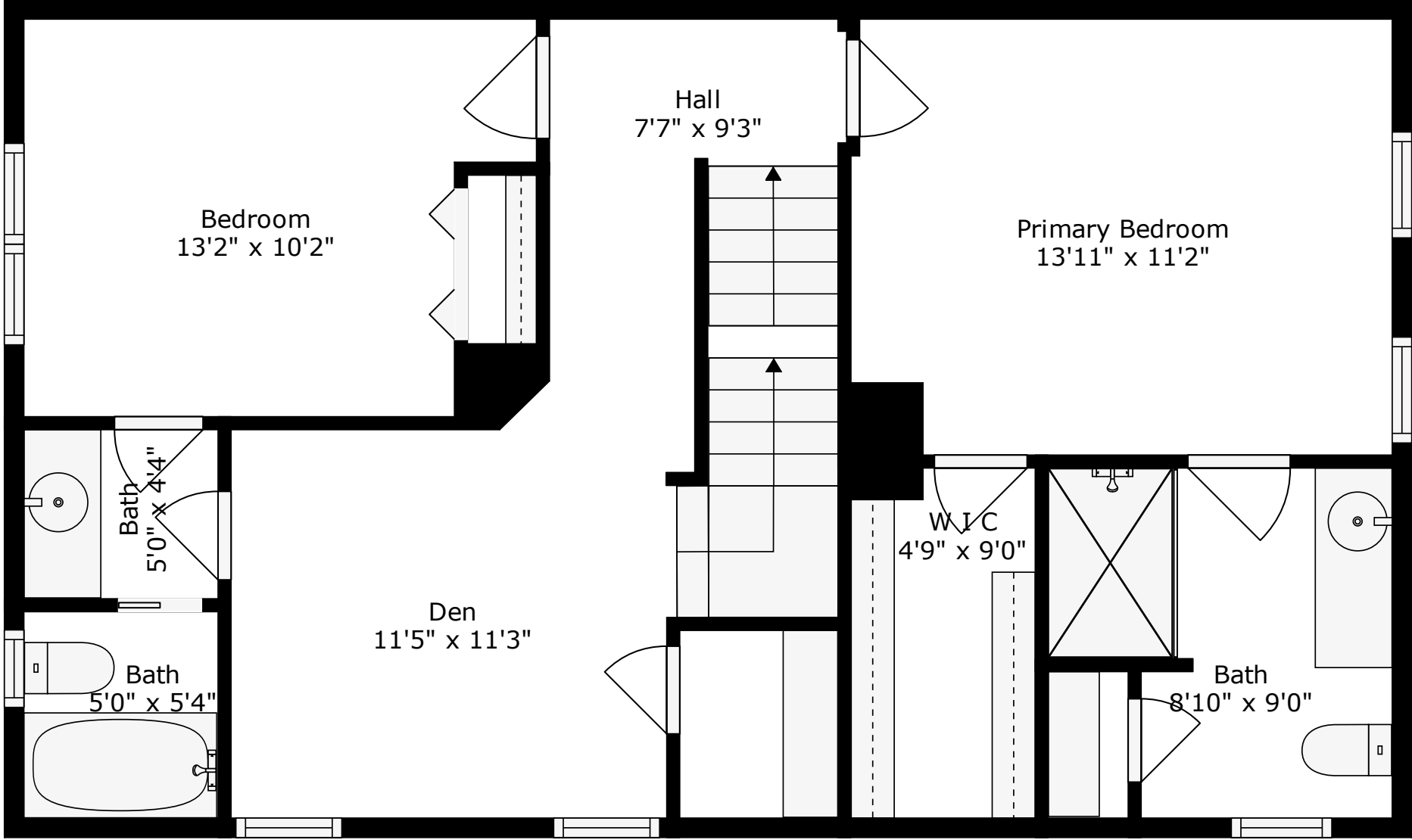
TOTAL: 1836 sq. ft
FLOOR 1: 720 sq. ft, FLOOR 2: 721 sq. ft, FLOOR 3: 395 sq. ft
EXCLUDED AREAS: PORCH: 18 sq. ft, PATIO: 378 sq. ft, SHED: 31 sq. ft,
LOW CEILING: 4 sq. ft

Floor Plan Created By Cubicasa App. Measurements Deemed Highly Reliable But Not Guaranteed.



826 Rue Drive

Grand Oaks Plantation | Charleston, SC 29414



Floor 2

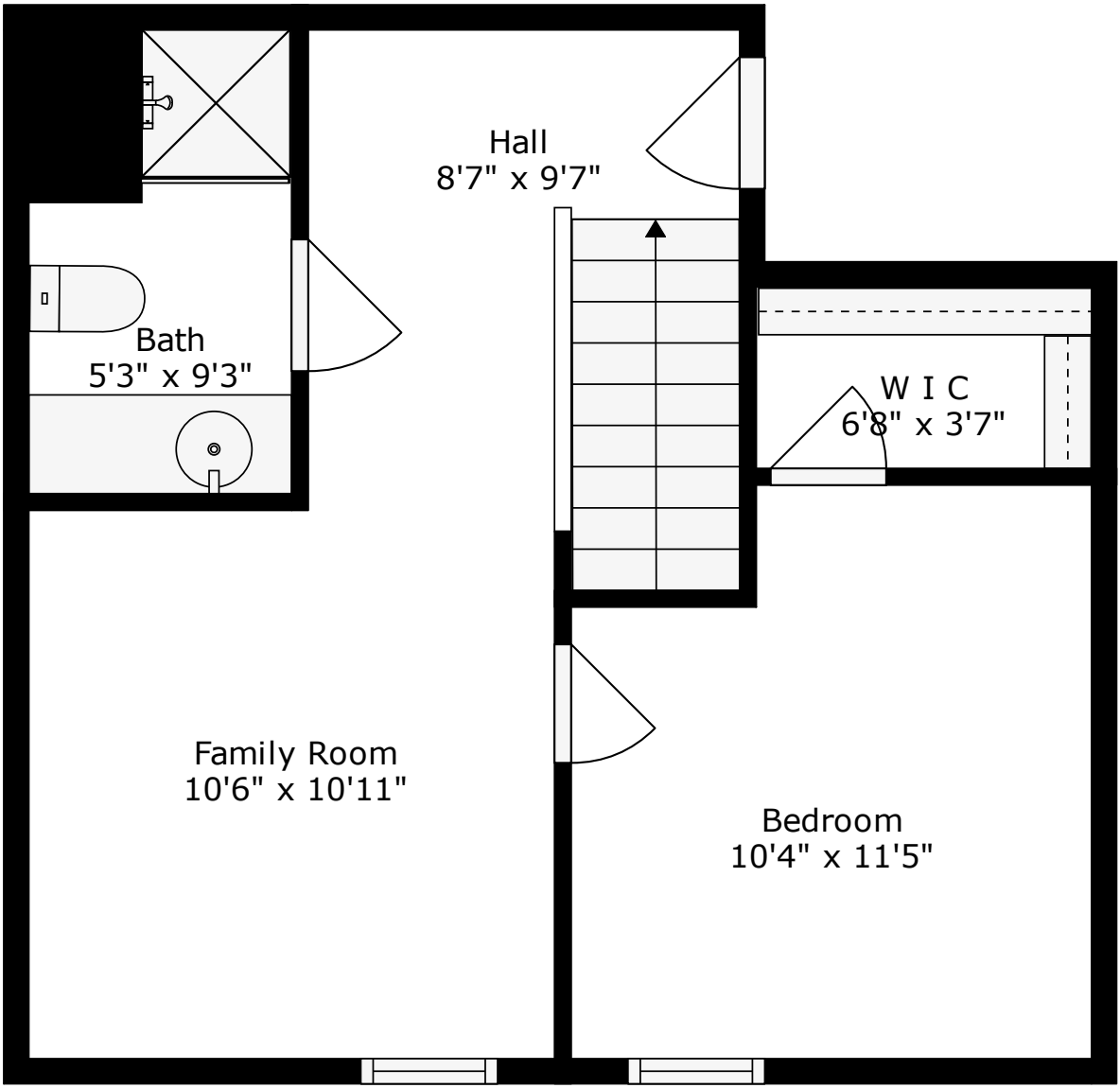
TOTAL: 1836 sq. ft
FLOOR 1: 720 sq. ft, FLOOR 2: 721 sq. ft, FLOOR 3: 395 sq. ft
EXCLUDED AREAS: PORCH: 18 sq. ft, PATIO: 378 sq. ft, SHED: 31 sq. ft,
LOW CEILING: 4 sq. ft

Floor Plan Created By Cubicasa App. Measurements Deemed Highly Reliable But Not Guaranteed.



826 Rue Drive

Grand Oaks Plantation | Charleston, SC 29414



Floor 3

TOTAL: 1836 sq. ft
FLOOR 1: 720 sq. ft, FLOOR 2: 721 sq. ft, FLOOR 3: 395 sq. ft
EXCLUDED AREAS: PORCH: 18 sq. ft, PATIO: 378 sq. ft, SHED: 31 sq. ft,
LOW CEILING: 4 sq. ft

Floor Plan Created By Cubicasa App. Measurements Deemed Highly Reliable But Not Guaranteed.

