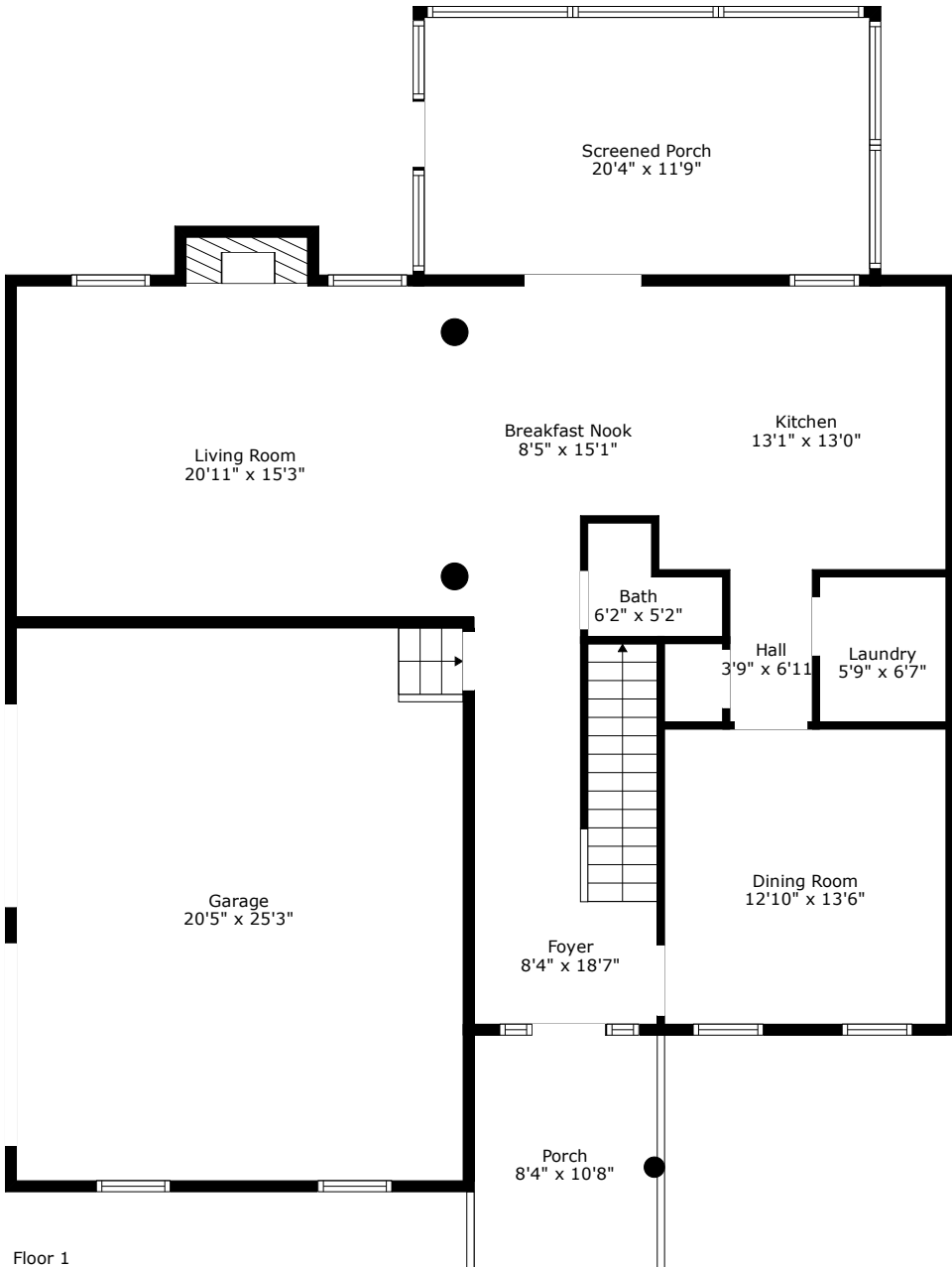
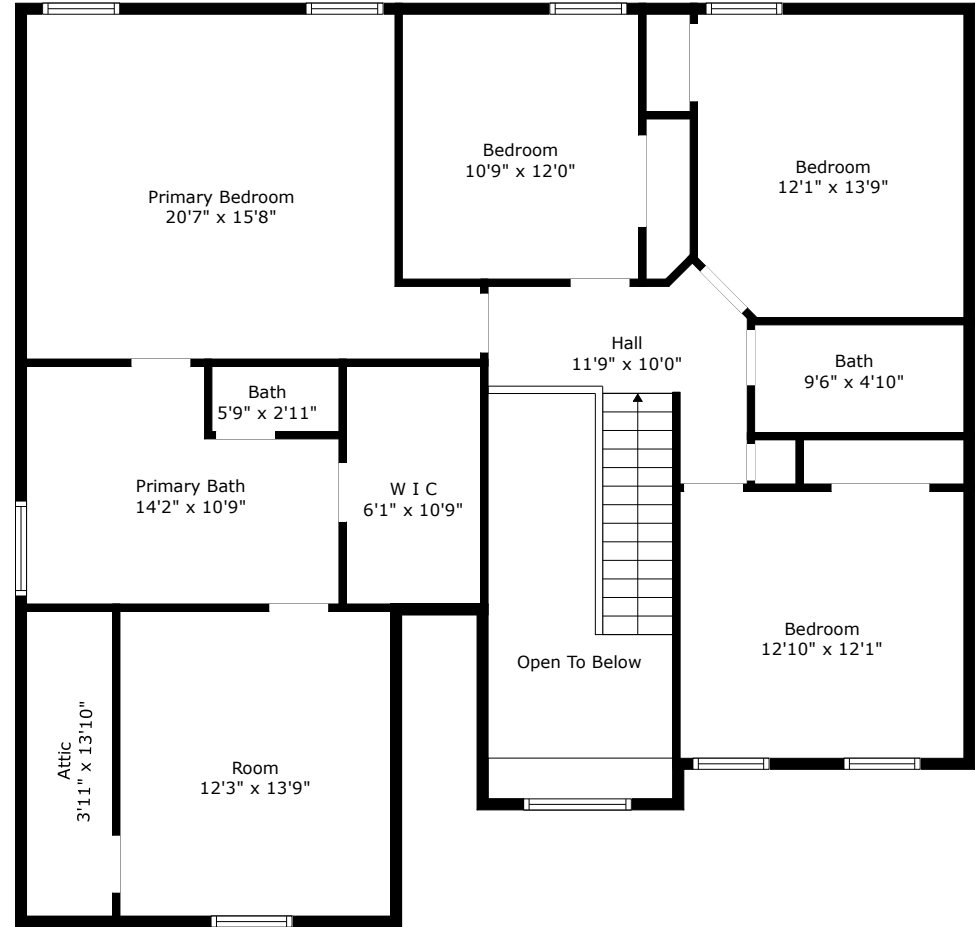


# 8745 Alexandria Drive

Cedar Grove | North Charleston, SC 29420



Floor 1



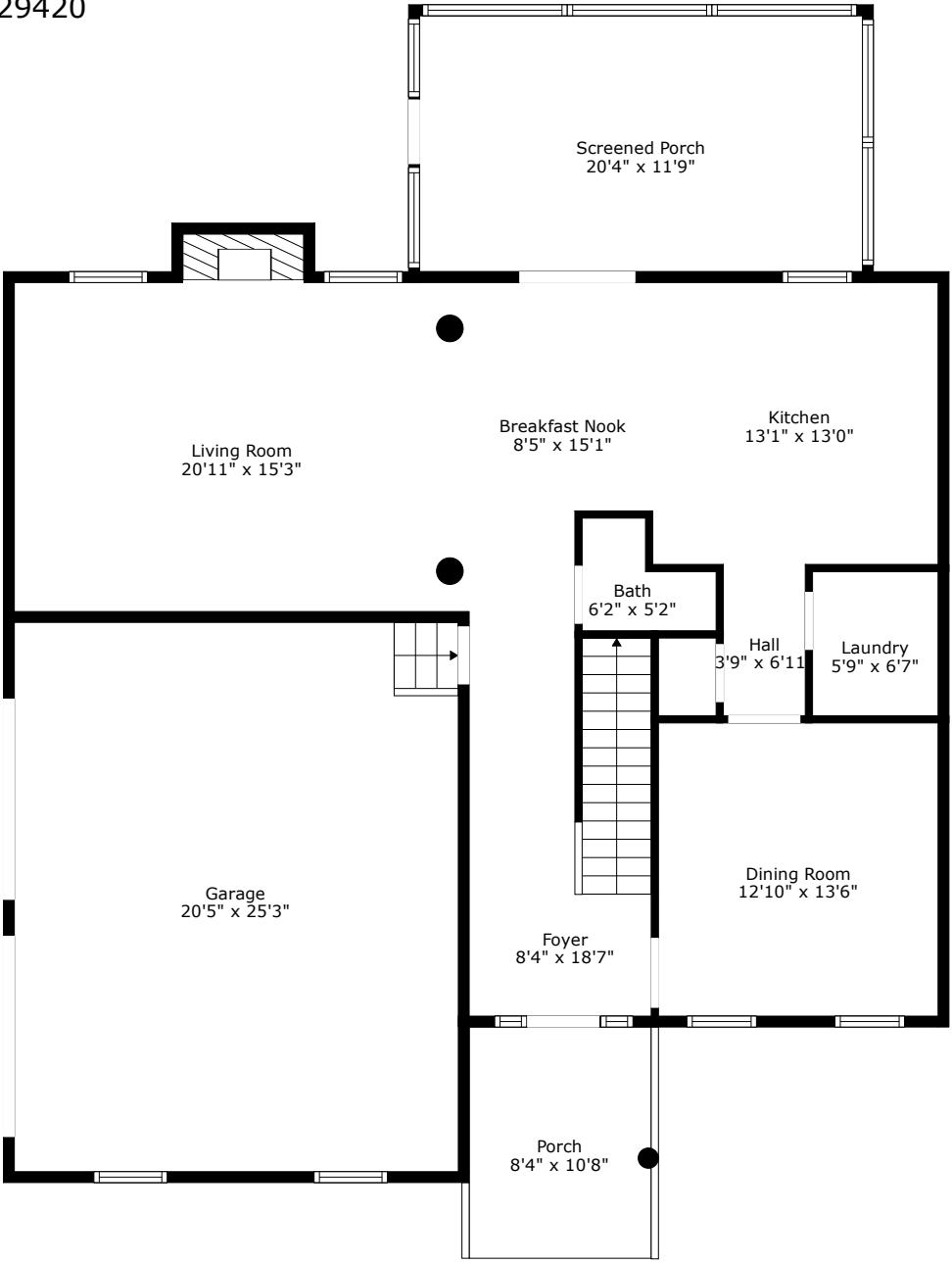
Floor 2

TOTAL: 2415 sq. ft  
FLOOR 1: 1047 sq. ft, FLOOR 2: 1368 sq. ft  
EXCLUDED AREAS: GARAGE: 516 sq. ft, SCREENED PORCH: 240 sq. ft, PORCH: 89 sq. ft,  
FIREPLACE: 15 sq. ft, OPEN TO BELOW: 115 sq. ft, ATTIC: 32 sq. ft,  
LOW CEILING: 22 sq. ft



# 8745 Alexandria Drive

Cedar Grove | North Charleston, SC 29420



Floor 1

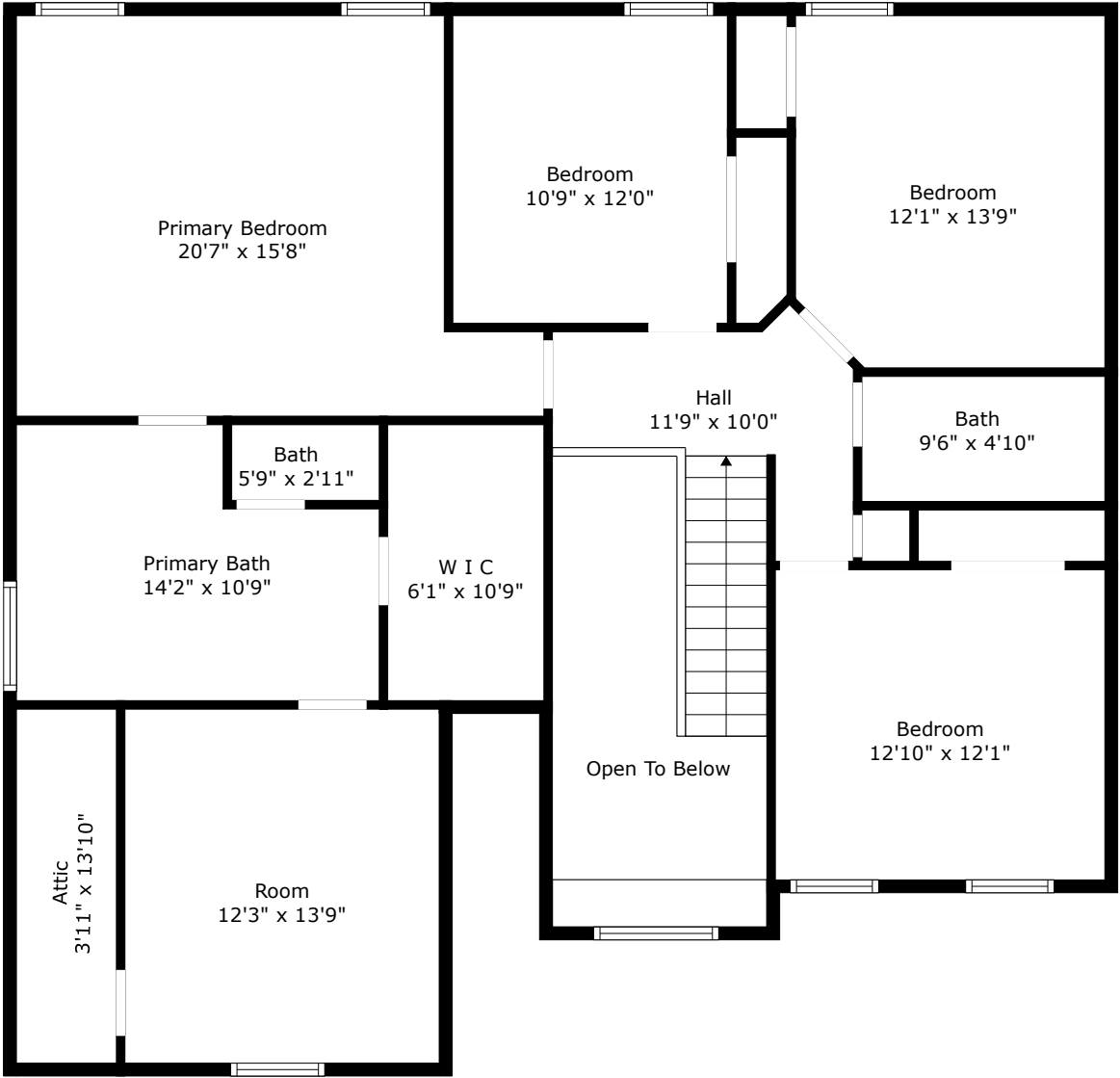
TOTAL: 2415 sq. ft  
FLOOR 1: 1047 sq. ft, FLOOR 2: 1368 sq. ft  
EXCLUDED AREAS: GARAGE: 516 sq. ft, SCREENED PORCH: 240 sq. ft, PORCH: 89 sq. ft,  
FIREPLACE: 15 sq. ft, OPEN TO BELOW: 115 sq. ft, ATTIC: 32 sq. ft,  
LOW CEILING: 22 sq. ft

Floor Plan Created By Cubicasa App. Measurements Deemed Highly Reliable But Not Guaranteed.



# 8745 Alexandria Drive

Cedar Grove | North Charleston, SC 29420



## Floor 2

TOTAL: 2415 sq. ft  
FLOOR 1: 1047 sq. ft, FLOOR 2: 1368 sq. ft  
EXCLUDED AREAS: GARAGE: 516 sq. ft, SCREENED PORCH: 240 sq. ft, PORCH: 89 sq. ft,  
FIREPLACE: 15 sq. ft, OPEN TO BELOW: 115 sq. ft, ATTIC: 32 sq. ft,  
LOW CEILING: 22 sq. ft

Floor Plan Created By Cubicasa App. Measurements Deemed Highly Reliable But Not Guaranteed.

