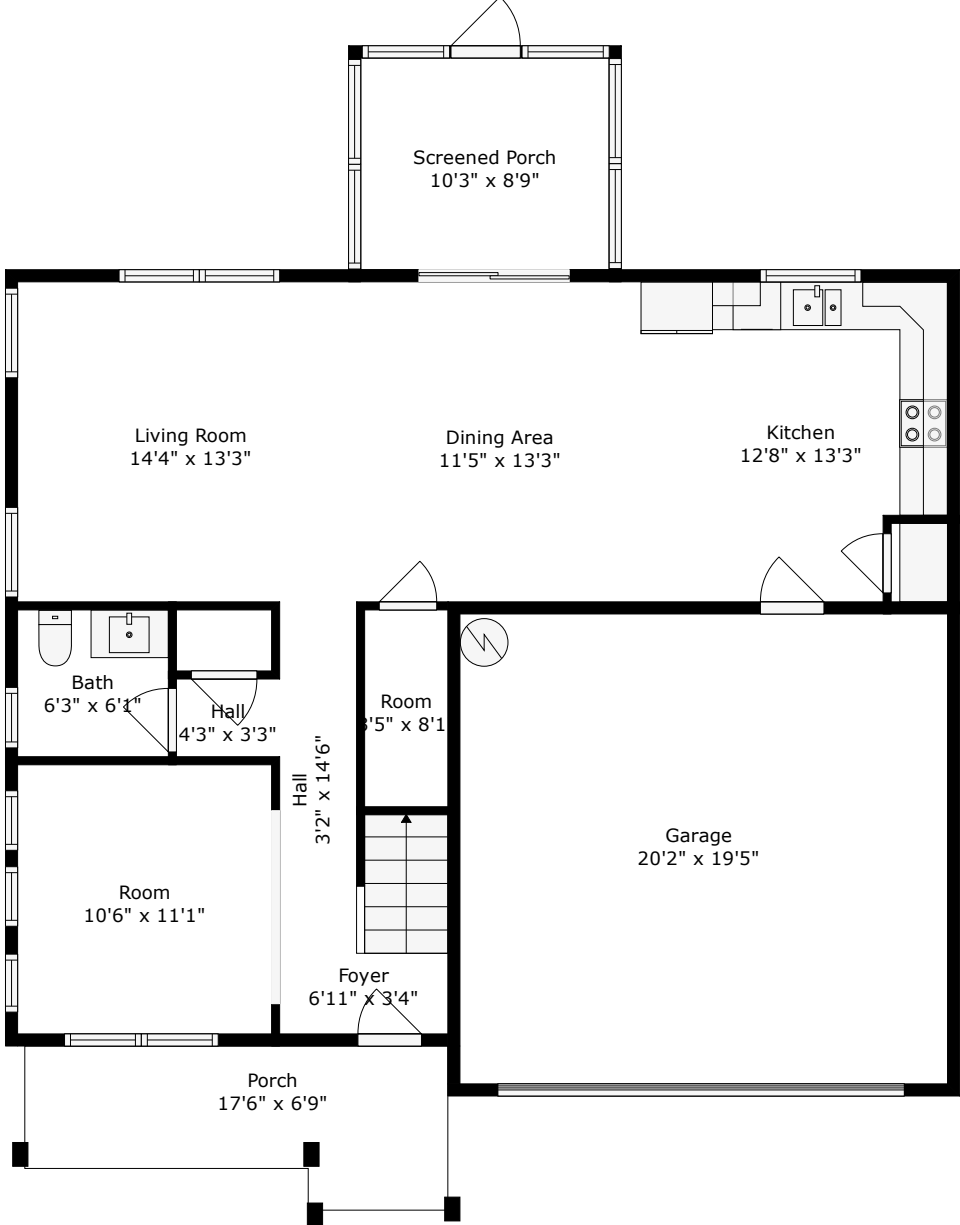
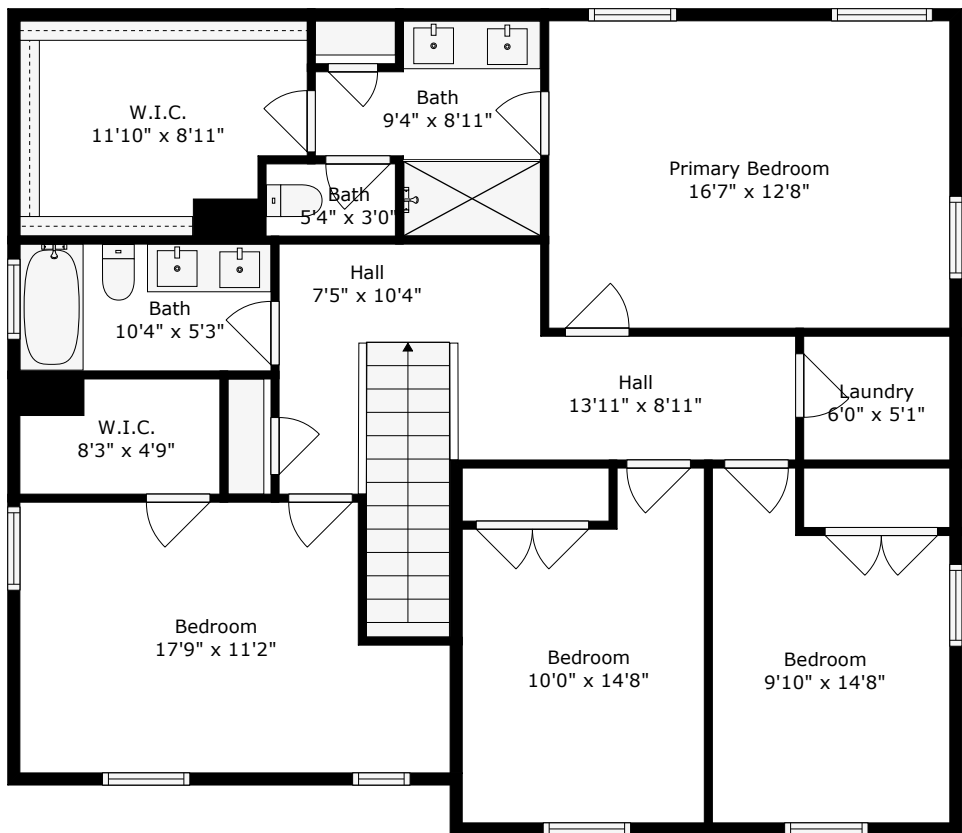


# 413 Renau Boulevard

Pine Forest Country Club | Summerville, SC 29483



Floor 1



Floor 2

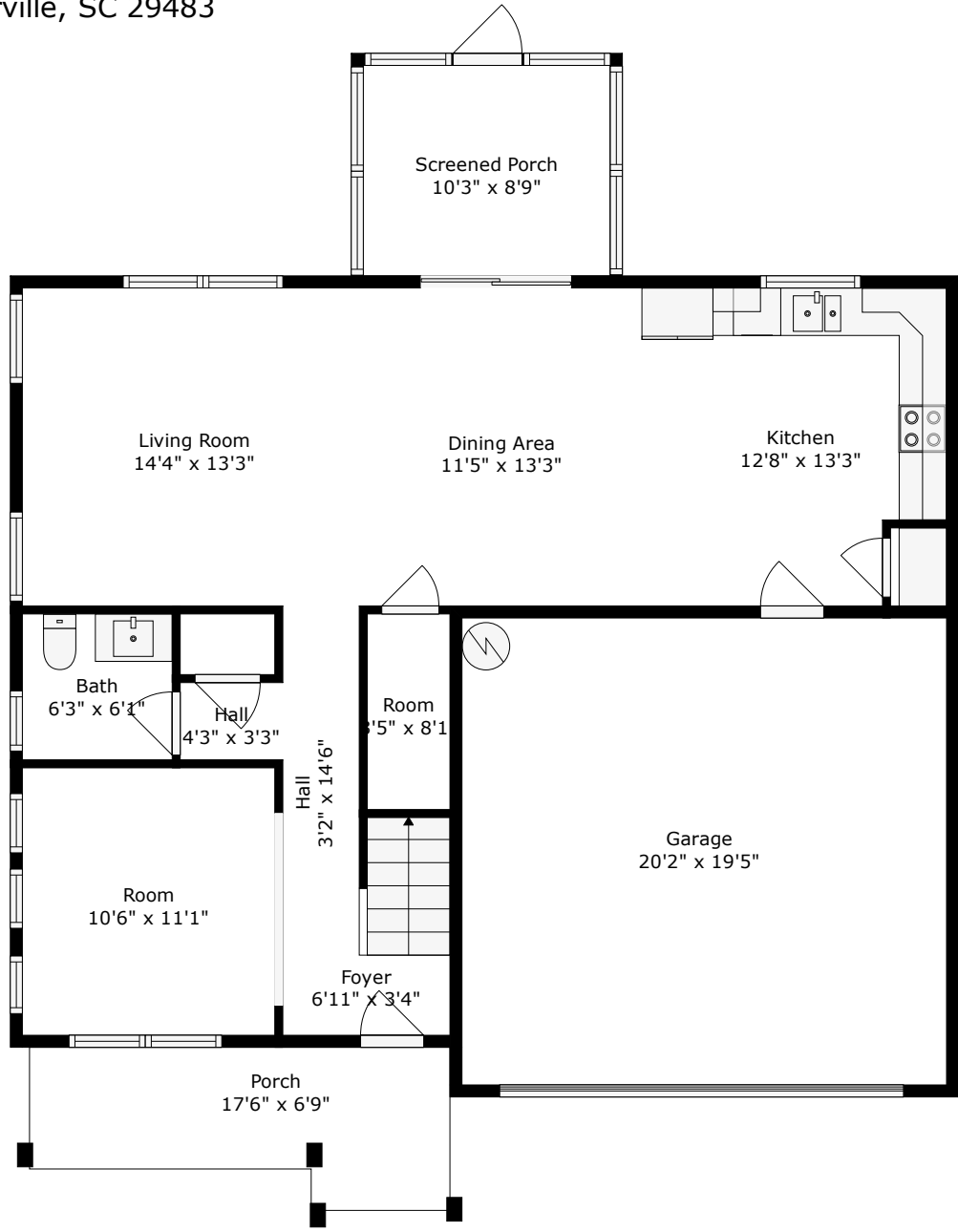
TOTAL: 2063 sq. ft  
FLOOR 1: 826 sq. ft, FLOOR 2: 1237 sq. ft  
EXCLUDED AREAS: GARAGE: 391 sq. ft, SCREENED PORCH: 90 sq. ft, PORCH: 98 sq. ft

Floor Plan Created by Cubicasa App. Measurements Deemed Highly Reliable But Not Guaranteed.



# 413 Renau Boulevard

Pine Forest Country Club | Summerville, SC 29483



Floor 1

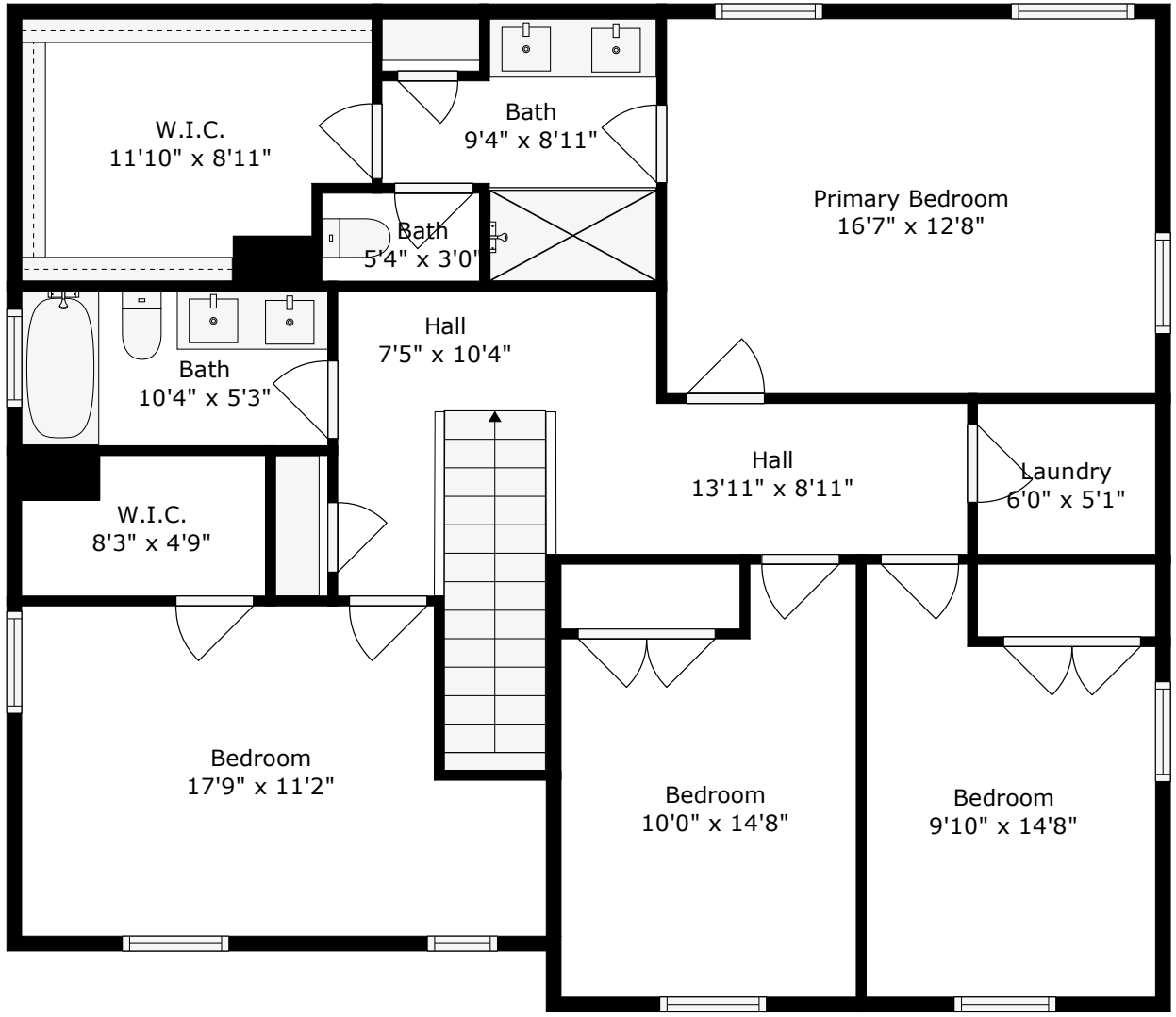
TOTAL: 2063 sq. ft  
FLOOR 1: 826 sq. ft, FLOOR 2: 1237 sq. ft  
EXCLUDED AREAS: GARAGE: 391 sq. ft, SCREENED PORCH: 90 sq. ft, PORCH: 98 sq. ft

Floor Plan Created by Cubicasa App. Measurements Deemed Highly Reliable But Not Guaranteed.



# 413 Renau Boulevard

Pine Forest Country Club | Summerville, SC 29483



Floor 2

TOTAL: 2063 sq. ft  
FLOOR 1: 826 sq. ft, FLOOR 2: 1237 sq. ft  
EXCLUDED AREAS: PORCH: 95 sq. ft, SCREENED PORCH: 90 sq. ft, GARAGE: 391 sq. ft

Floor Plan Created by Cubicasa App. Measurements Deemed Highly Reliable But Not Guaranteed.



# 413 Renau Boulevard

Pine Forest Country Club | Summerville, SC 29483



FLOOR 1

**413 Renau Boulevard**  
Pine Forest Country Club | Summerville, SC 29483

