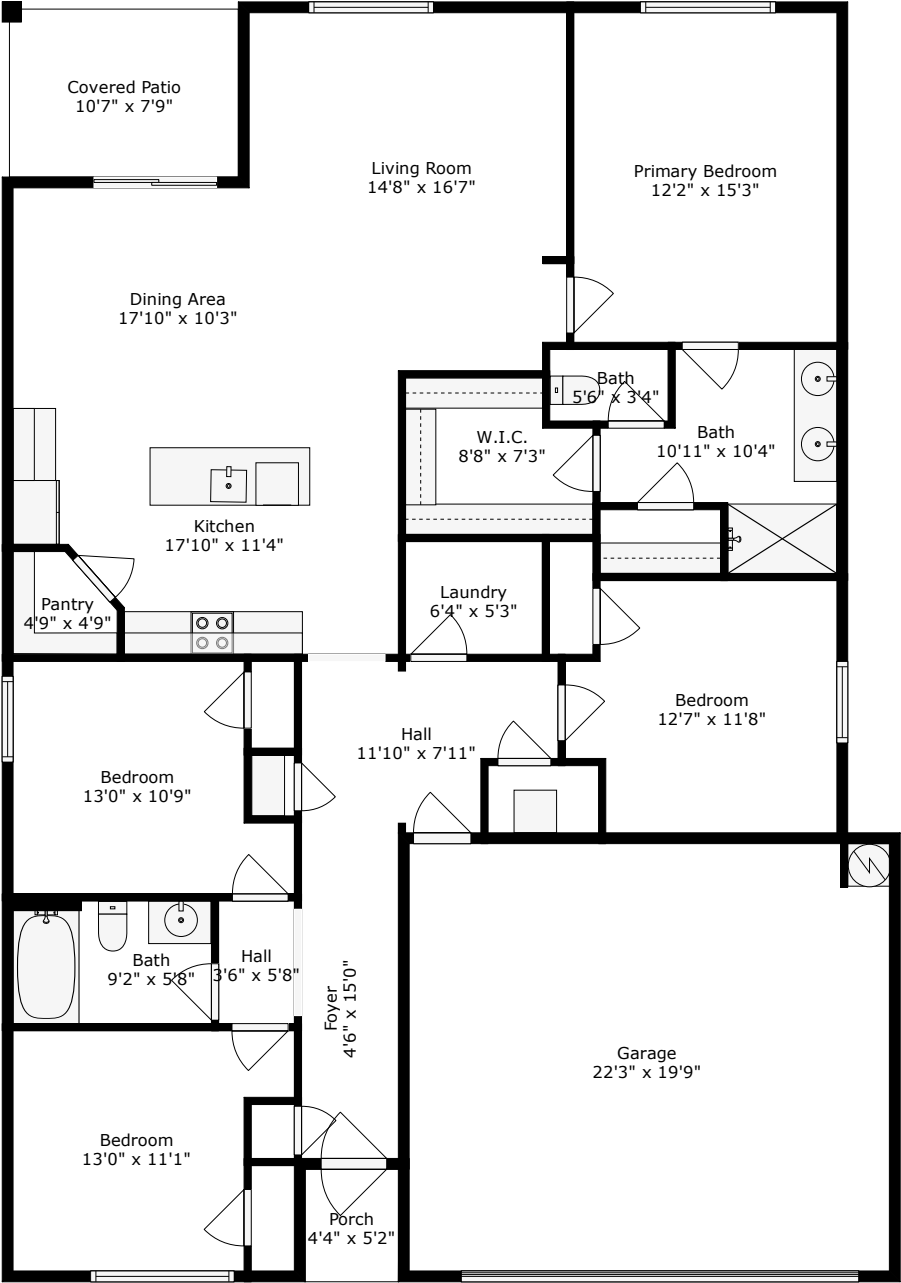


369 Spruce Ivy Street

Stone Ridge
Moncks Corner, SC 29461



TOTAL: 1695 sq. ft
FLOOR 1: 1695 sq. ft
EXCLUDED AREAS: GARAGE: 439 sq. ft, COVERED PATIO: 82 sq. ft, PORCH: 23 sq. ft

Floor Plan Created By Cubicasa App. Measurements Deemed Highly Reliable But Not Guaranteed.

