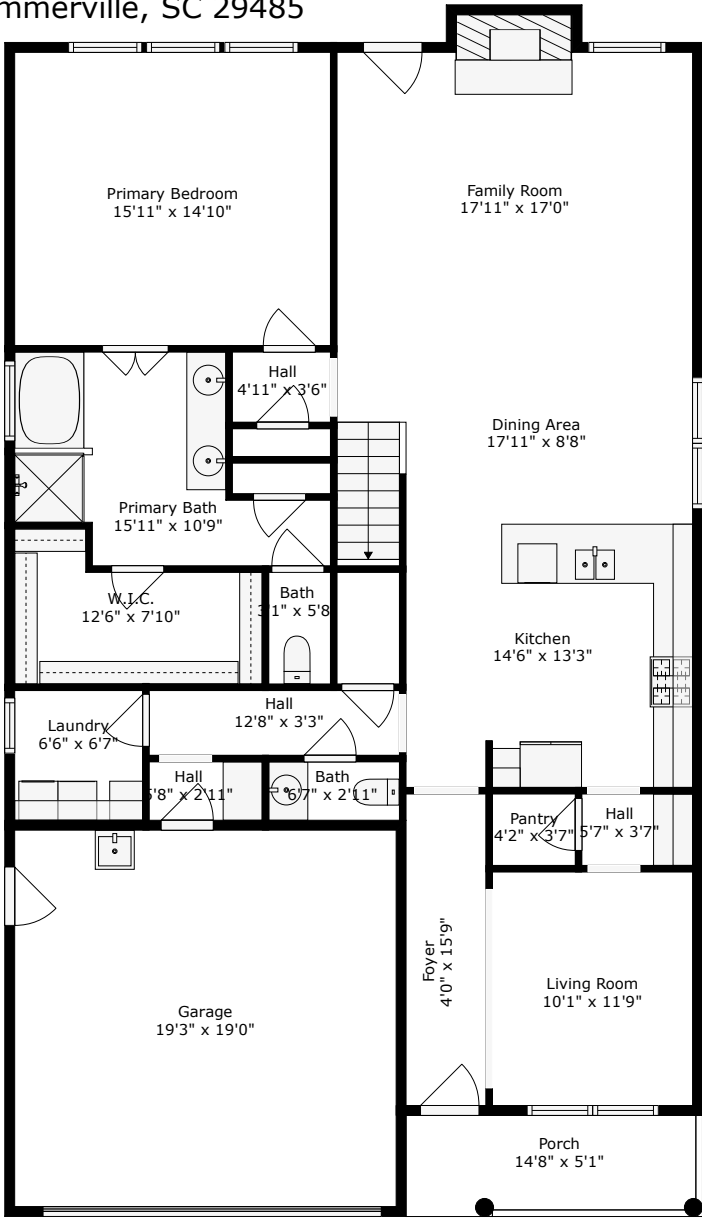
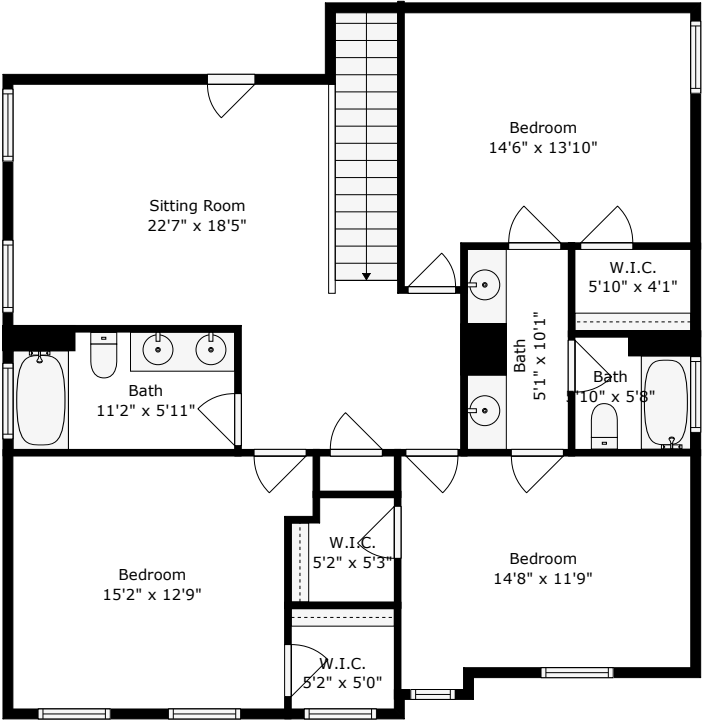


**158 Boots Branch Road**  
Drayton Oaks | Summerville, SC 29485



Floor 1

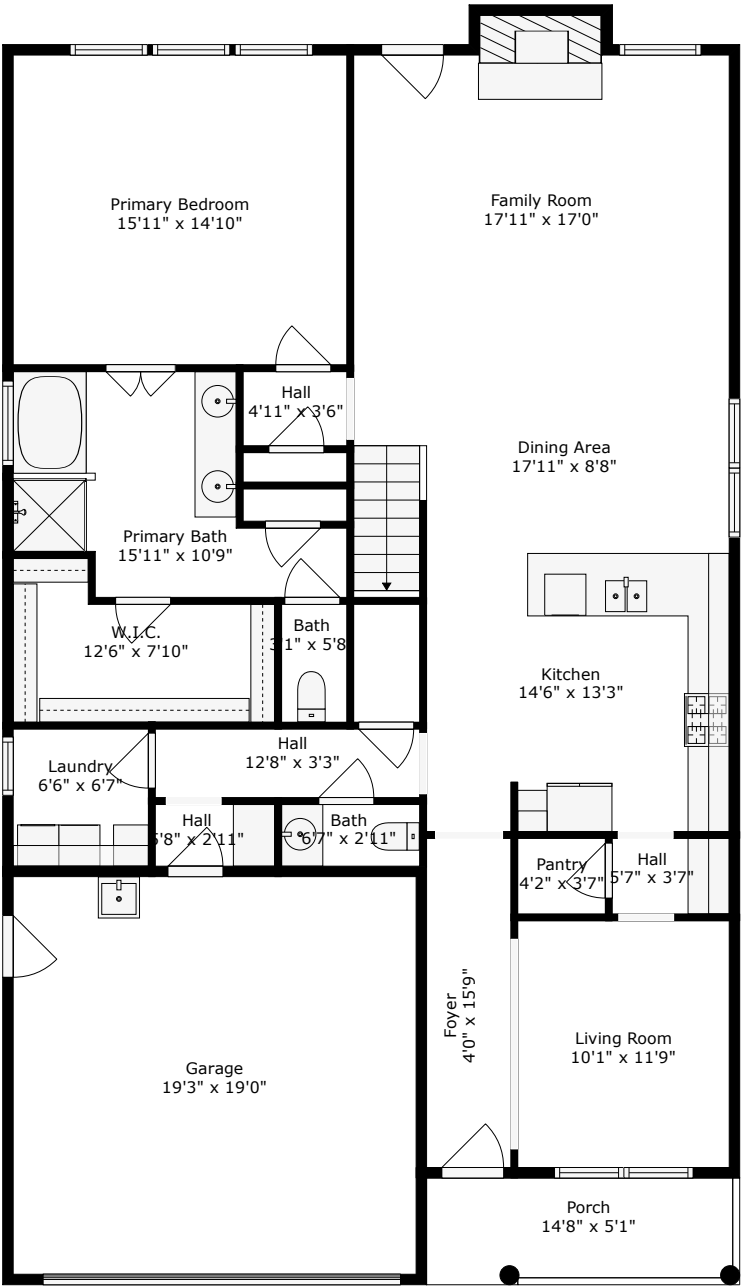


Floor 2

FLOOR 1: 1538 sq. ft, FLOOR 2: 1118 sq. ft  
EXCLUDED AREAS: GARAGE: 366 sq. ft, PORCH: 71 sq. ft, FIREPLACE: 13 sq. ft



**158 Boots Branch Road**  
Drayton Oaks | Summerville, SC 29485



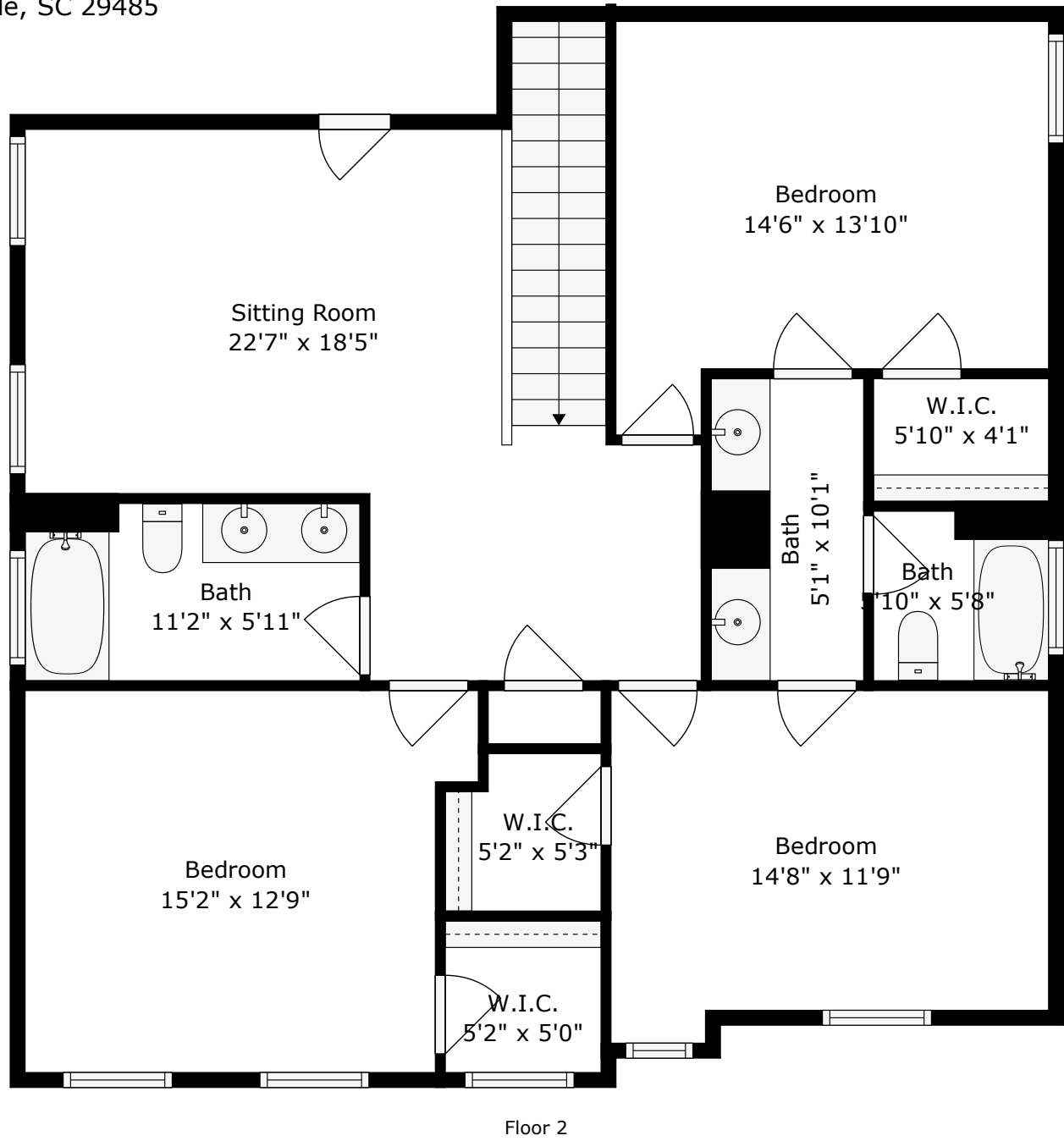
Floor 1

FLOOR 1: 1538 sq. ft, FLOOR 2: 1118 sq. ft  
EXCLUDED AREAS: GARAGE: 366 sq. ft, PORCH: 71 sq. ft, FIREPLACE: 13 sq. ft

Floor Plan Created By Cubicasa App. Measurements Deemed Highly Reliable But Not Guaranteed.



**158 Boots Branch Road**  
Drayton Oaks | Summerville, SC 29485



FLOOR 1: 1538 sq. ft, FLOOR 2: 1118 sq. ft  
EXCLUDED AREAS: GARAGE: 366 sq. ft, PORCH: 71 sq. ft, FIREPLACE: 13 sq. ft

Floor Plan Created By Cubicasa App. Measurements Deemed Highly Reliable But Not Guaranteed.

