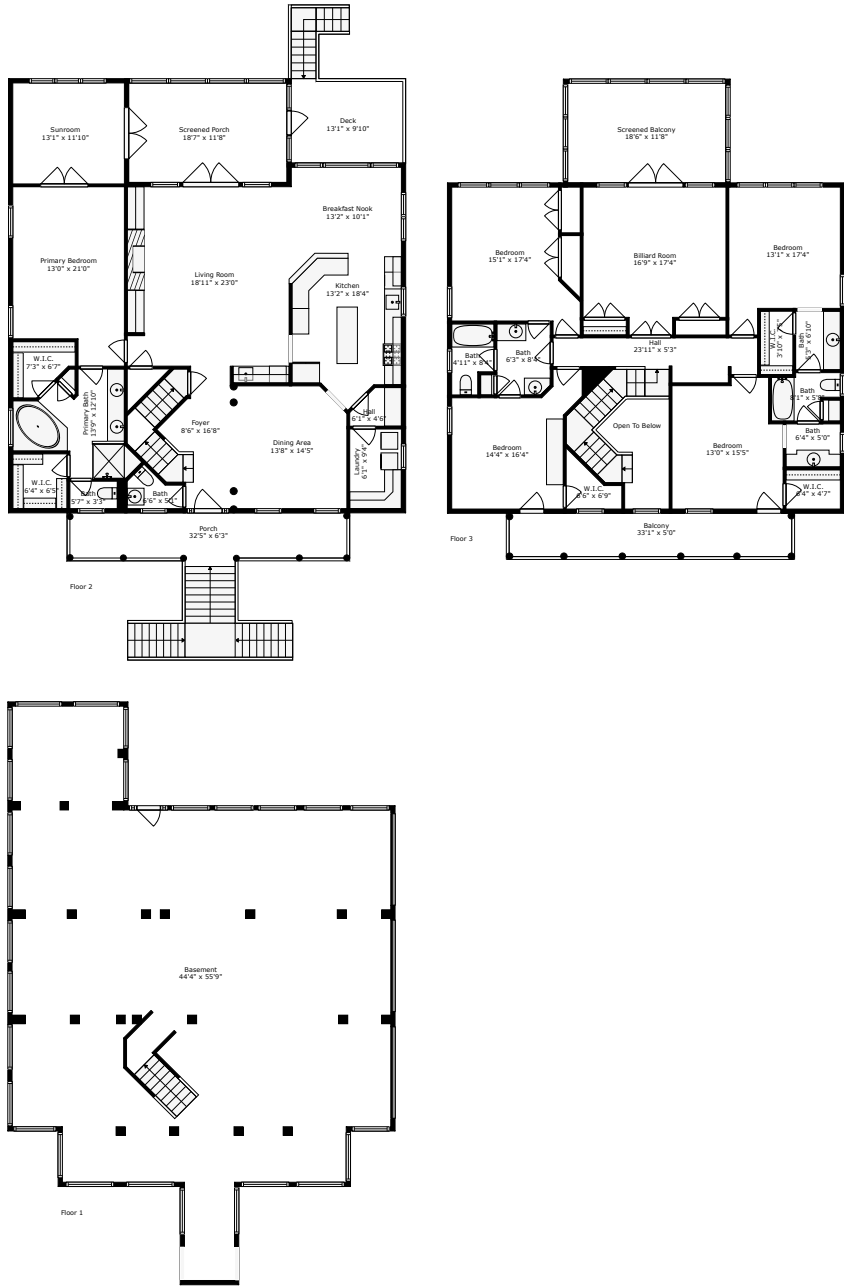


4991 Sound View Drive

Hamlin Plantation  
Mount Pleasant, SC 29466

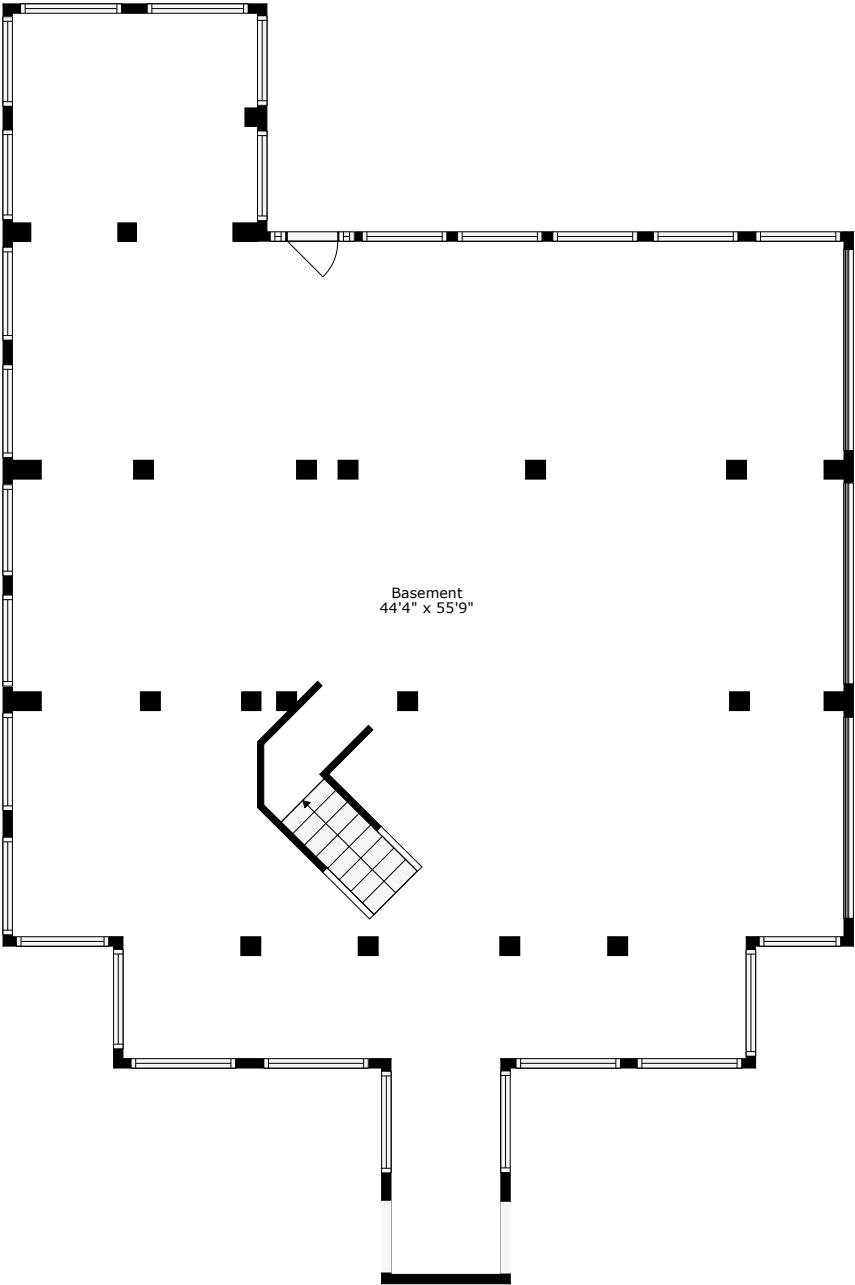


**TOTAL: 3545 sq. ft**  
BELOW GROUND: 0 sq. ft, FLOOR 2: 1904 sq. ft, FLOOR 3: 1641 sq. ft  
EXCLUDED AREAS: BASEMENT: 2088 sq. ft, SCREENED PORCH: 216 sq. ft, PORCH: 312 sq. ft,  
DECK: 173 sq. ft, SCREENED BALCONY: 216 sq. ft, BALCONY: 168 sq. ft,  
OPEN TO BELOW: 75 sq. ft



# 4991 Sound View Drive

Hamlin Plantation  
Mount Pleasant, SC 29466



Basement  
44'4" x 55'9"

Ground Floor

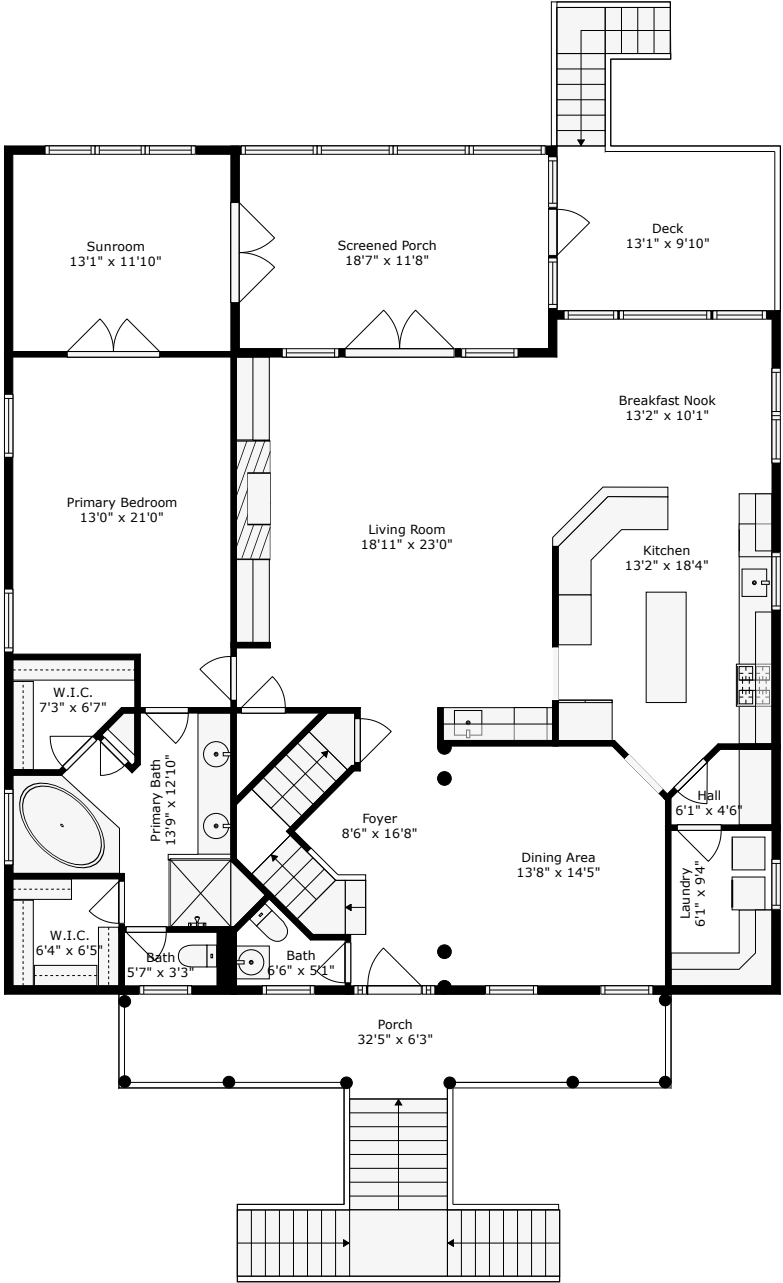
**TOTAL: 3545 sq. ft**

BELOW GROUND: 0 sq. ft, FLOOR 2: 1904 sq. ft, FLOOR 3: 1641 sq. ft  
EXCLUDED AREAS: BASEMENT: 2088 sq. ft, SCREENED PORCH: 216 sq. ft, PORCH: 312 sq. ft,  
DECK: 173 sq. ft, SCREENED BALCONY: 216 sq. ft, BALCONY: 168 sq. ft,  
OPEN TO BELOW: 75 sq. ft



4991 Sound View Drive

Hamlin Plantation  
Mount Pleasant, SC 29466



Floor 1

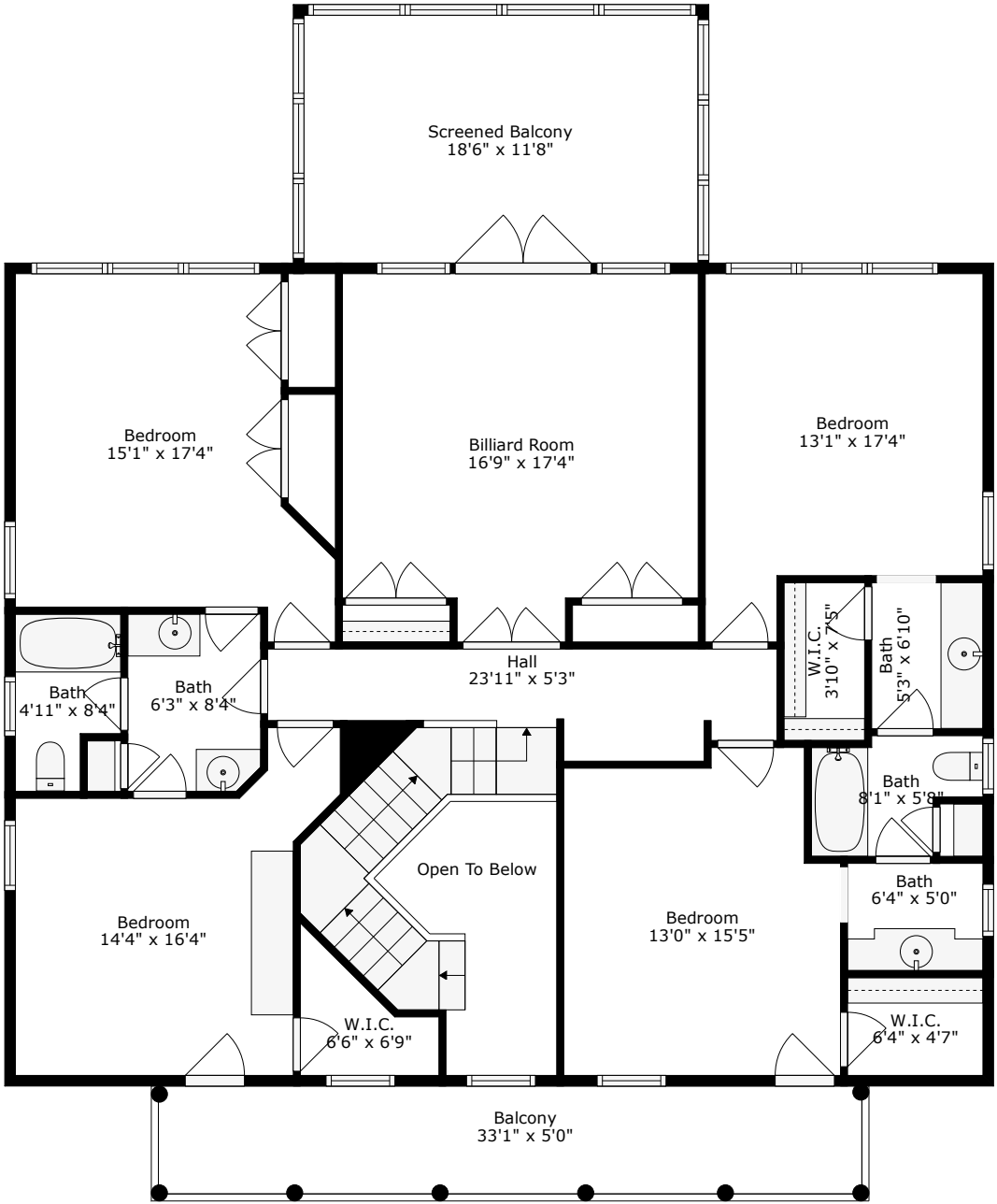
TOTAL: 3545 sq. ft

BELOW GROUND: 0 sq. ft, FLOOR 2: 1904 sq. ft, FLOOR 3: 1641 sq. ft  
EXCLUDED AREAS: BASEMENT: 2088 sq. ft, SCREENED PORCH: 216 sq. ft, PORCH: 312 sq. ft,  
DECK: 173 sq. ft, SCREENED BALCONY: 216 sq. ft, BALCONY: 168 sq. ft,  
OPEN TO BELOW: 75 sq. ft



4991 Sound View Drive

Hamlin Plantation  
Mount Pleasant, SC 29466



Floor 2

TOTAL: 3545 sq. ft

BELOW GROUND: 0 sq. ft, FLOOR 2: 1904 sq. ft, FLOOR 3: 1641 sq. ft  
EXCLUDED AREAS: BASEMENT: 2088 sq. ft, SCREENED PORCH: 216 sq. ft, PORCH: 312 sq. ft,  
DECK: 173 sq. ft, SCREENED BALCONY: 216 sq. ft, BALCONY: 168 sq. ft,  
OPEN TO BELOW: 75 sq. ft

