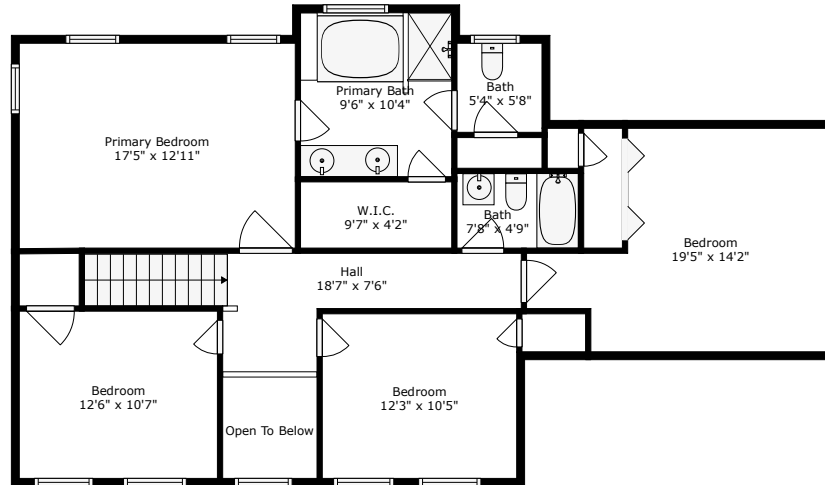
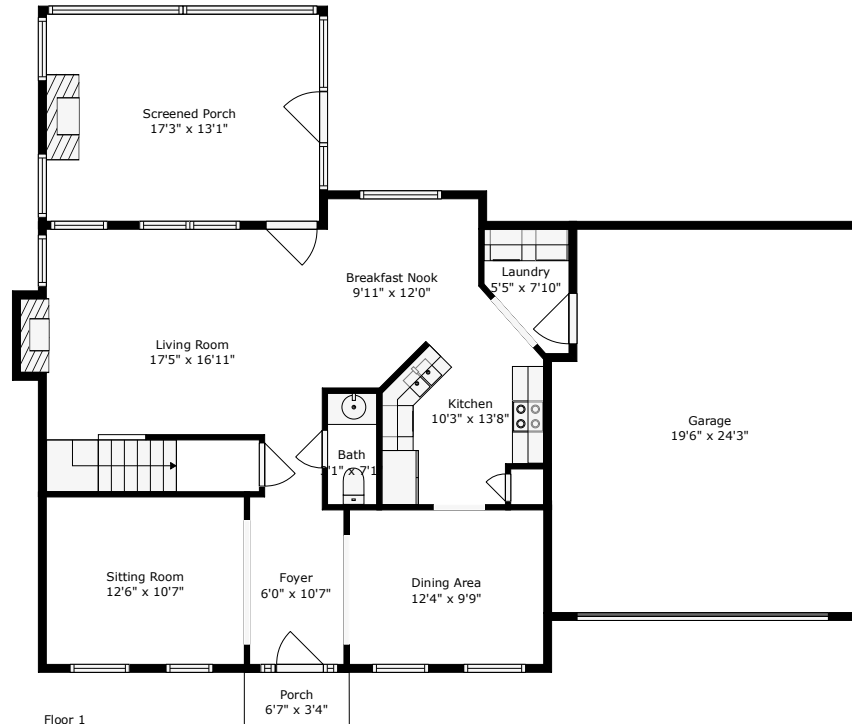


# 3092 Morningdale Drive

Ivy Hall | Mount Pleasant, SC 29466



Floor 2



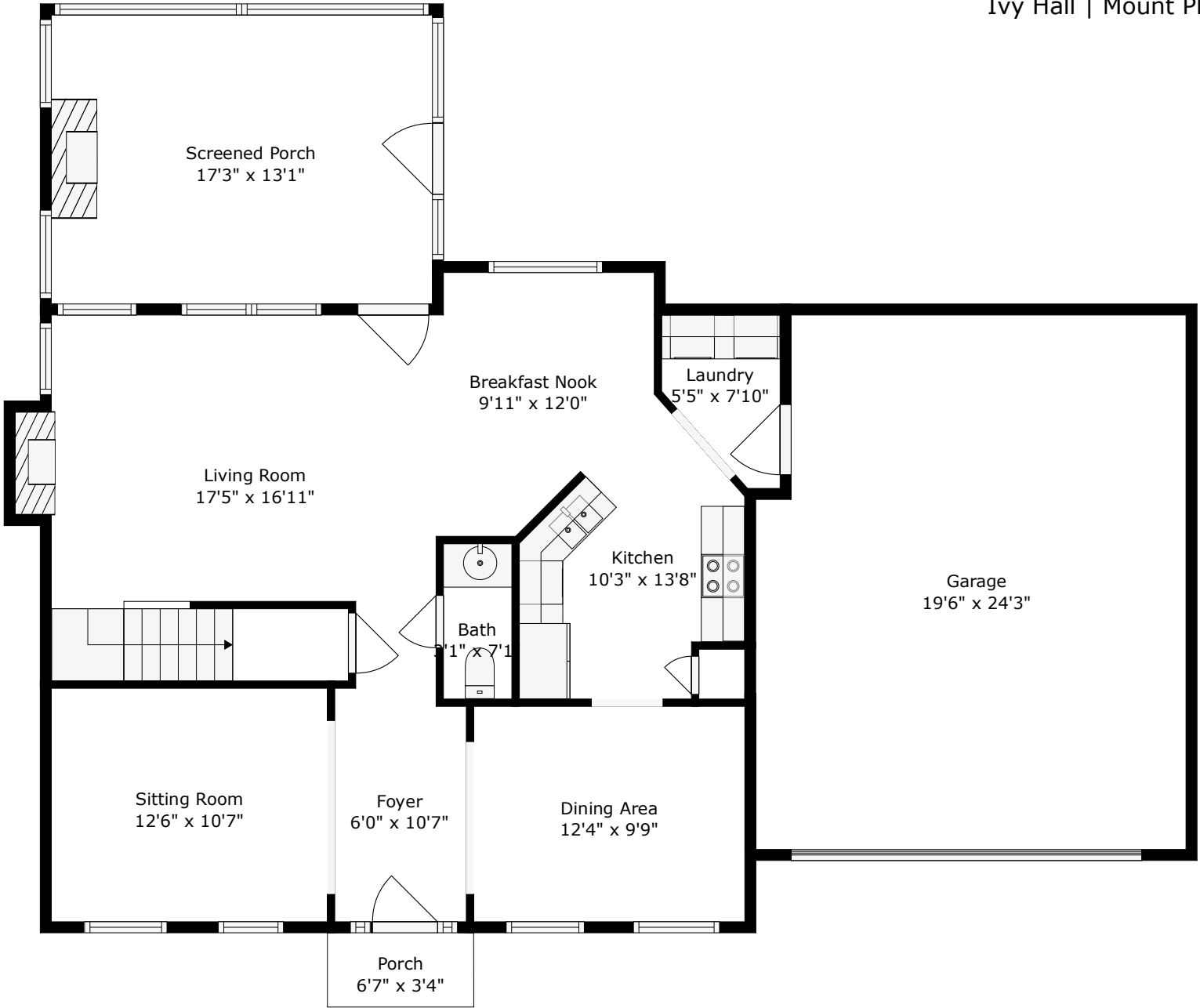
Floor 1

**TOTAL: 2038 sq. ft**

FLOOR 1: 900 sq. ft, FLOOR 2: 1138 sq. ft

EXCLUDED AREAS: SCREENED PORCH: 227 sq. ft, PORCH: 22 sq. ft, GARAGE: 460 sq. ft,  
FIREPLACE: 9 sq. ft, OPEN TO BELOW : 38 sq. ft

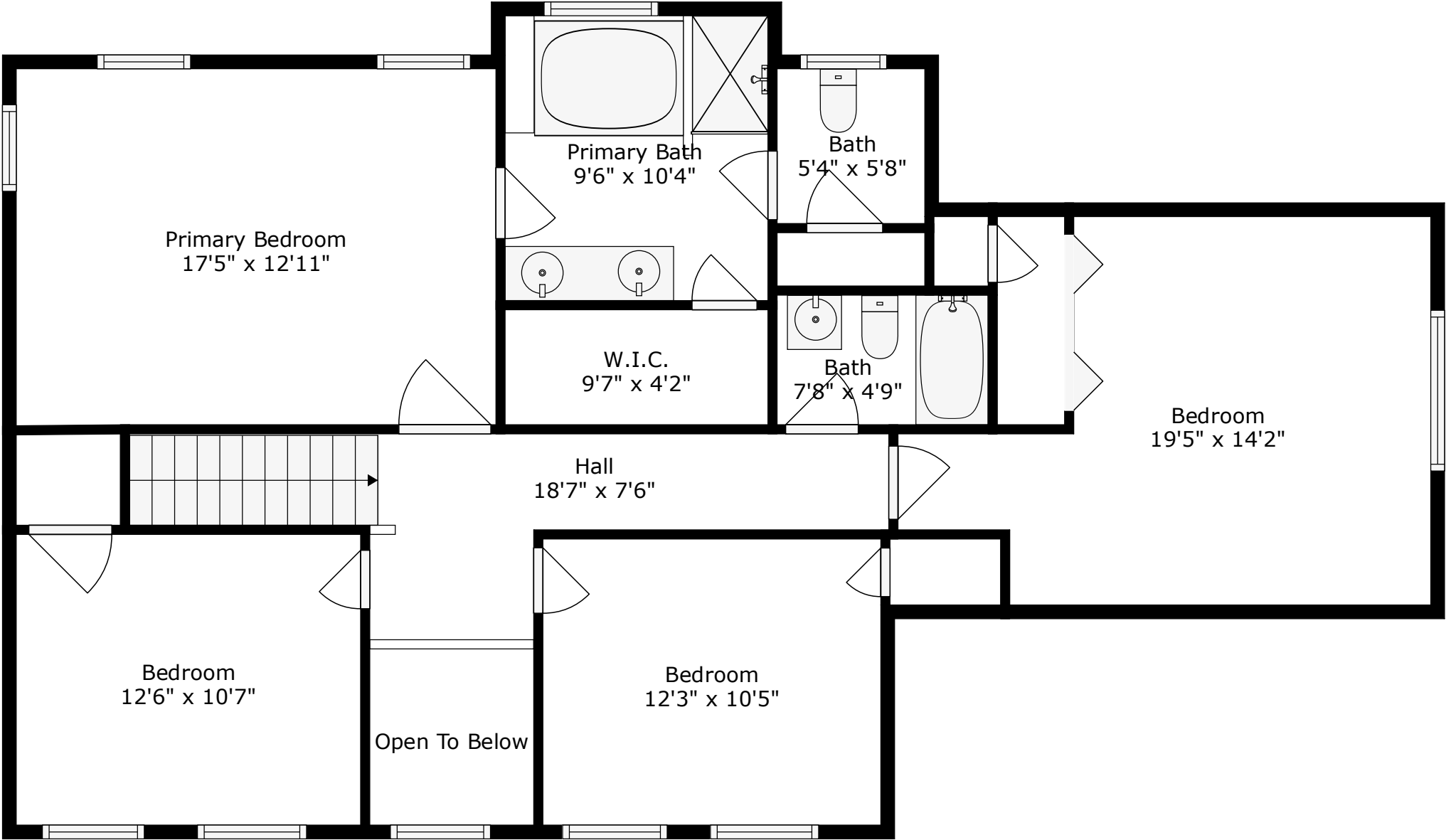




Floor 1

**TOTAL: 2038 sq. ft**  
FLOOR 1: 900 sq. ft, FLOOR 2: 1138 sq. ft  
EXCLUDED AREAS: SCREENED PORCH: 227 sq. ft, PORCH: 22 sq. ft, GARAGE: 460 sq. ft,  
FIREPLACE: 9 sq. ft, OPEN TO BELOW: 38 sq. ft





Floor 2

**TOTAL: 2038 sq. ft**  
FLOOR 1: 900 sq. ft, FLOOR 2: 1138 sq. ft  
EXCLUDED AREAS: SCREENED PORCH: 227 sq. ft, PORCH: 22 sq. ft, GARAGE: 460 sq. ft,  
FIREPLACE: 9 sq. ft, OPEN TO BELOW: 38 sq. ft

