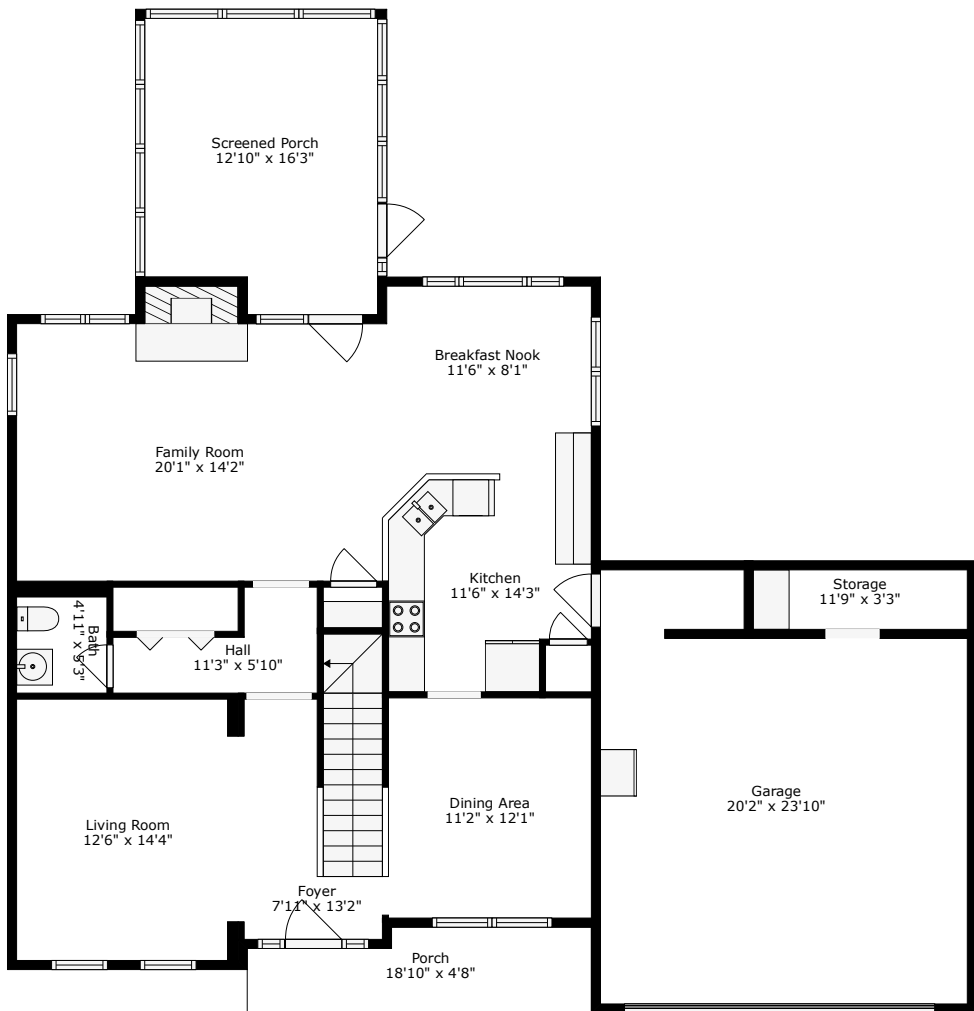
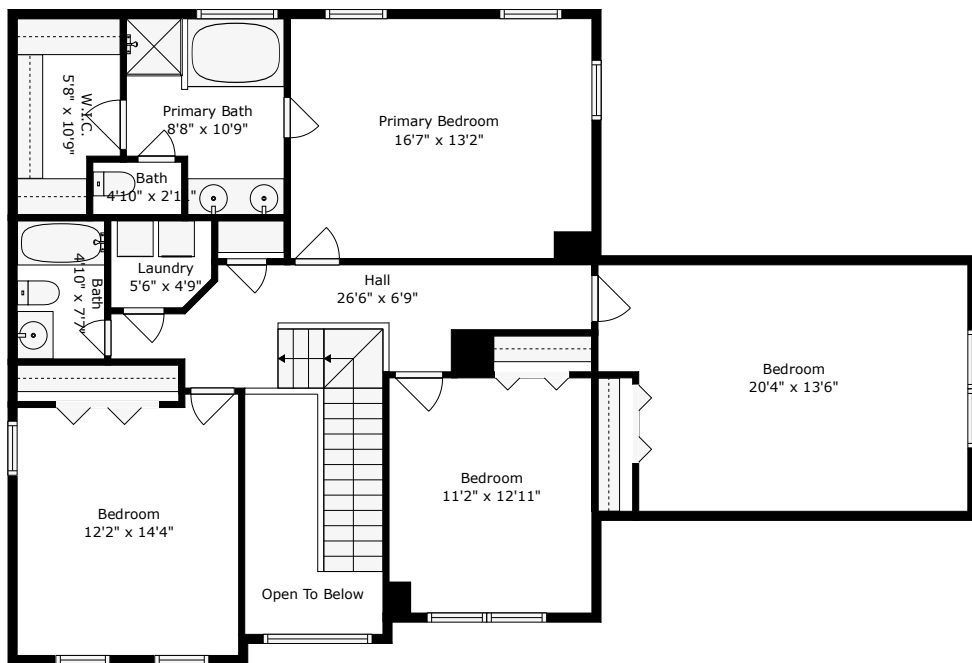


9209 Markleys Grove Boulevard

Wescott Plantation | Summerville, SC 29485



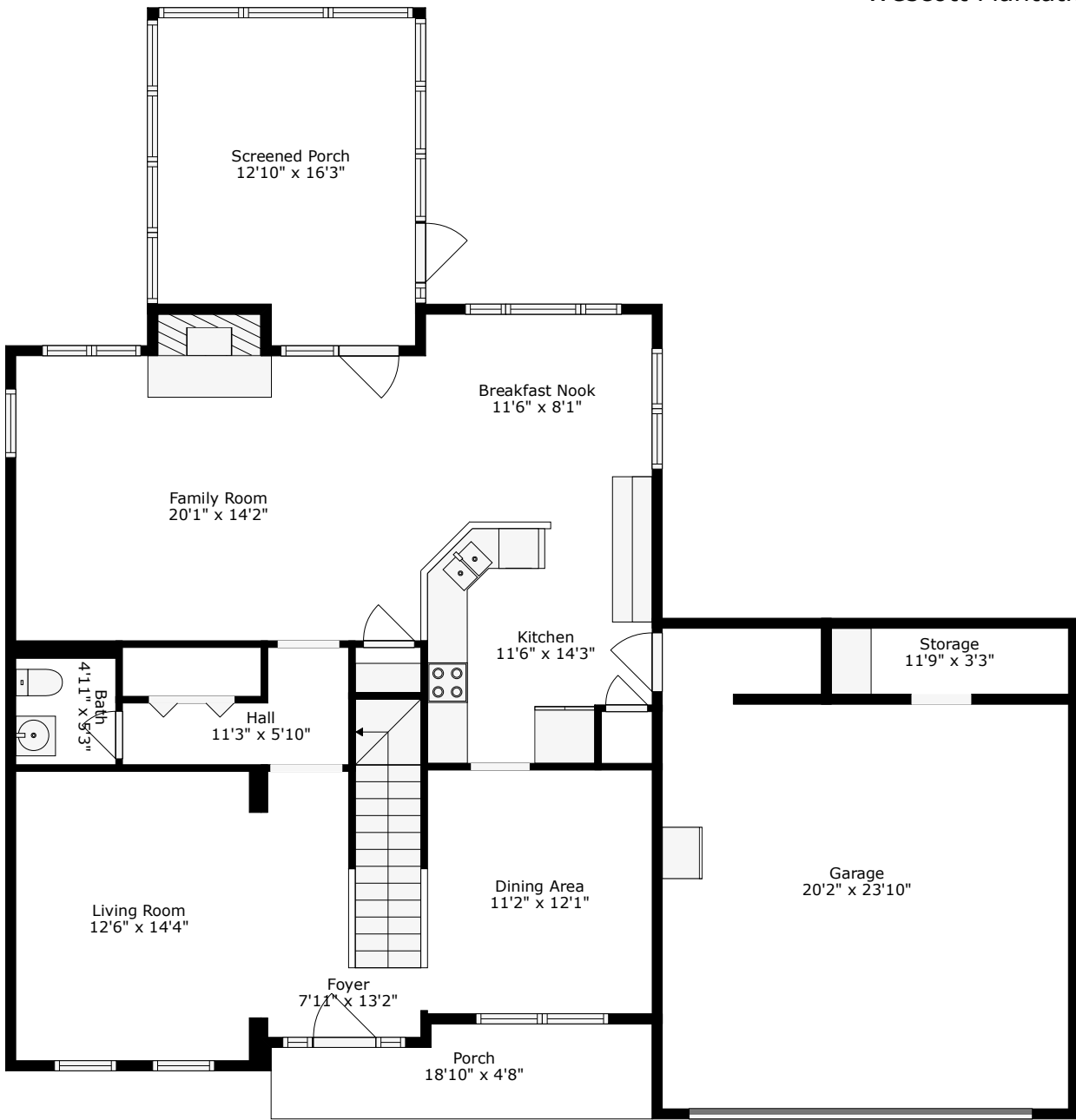
Floor 1



Floor 2

TOTAL: 2378 sq. ft
FLOOR 1: 1095 sq. ft, FLOOR 2: 1283 sq. ft
EXCLUDED AREAS: STORAGE: 38 sq. ft, GARAGE: 432 sq. ft, SCREENED PORCH: 197 sq. ft,
PORCH: 80 sq. ft, FIREPLACE: 12 sq. ft, OPEN TO BELOW: 66 sq. ft
WALLS: 219 sq. ft





Floor 1

TOTAL: 2378 sq. ft

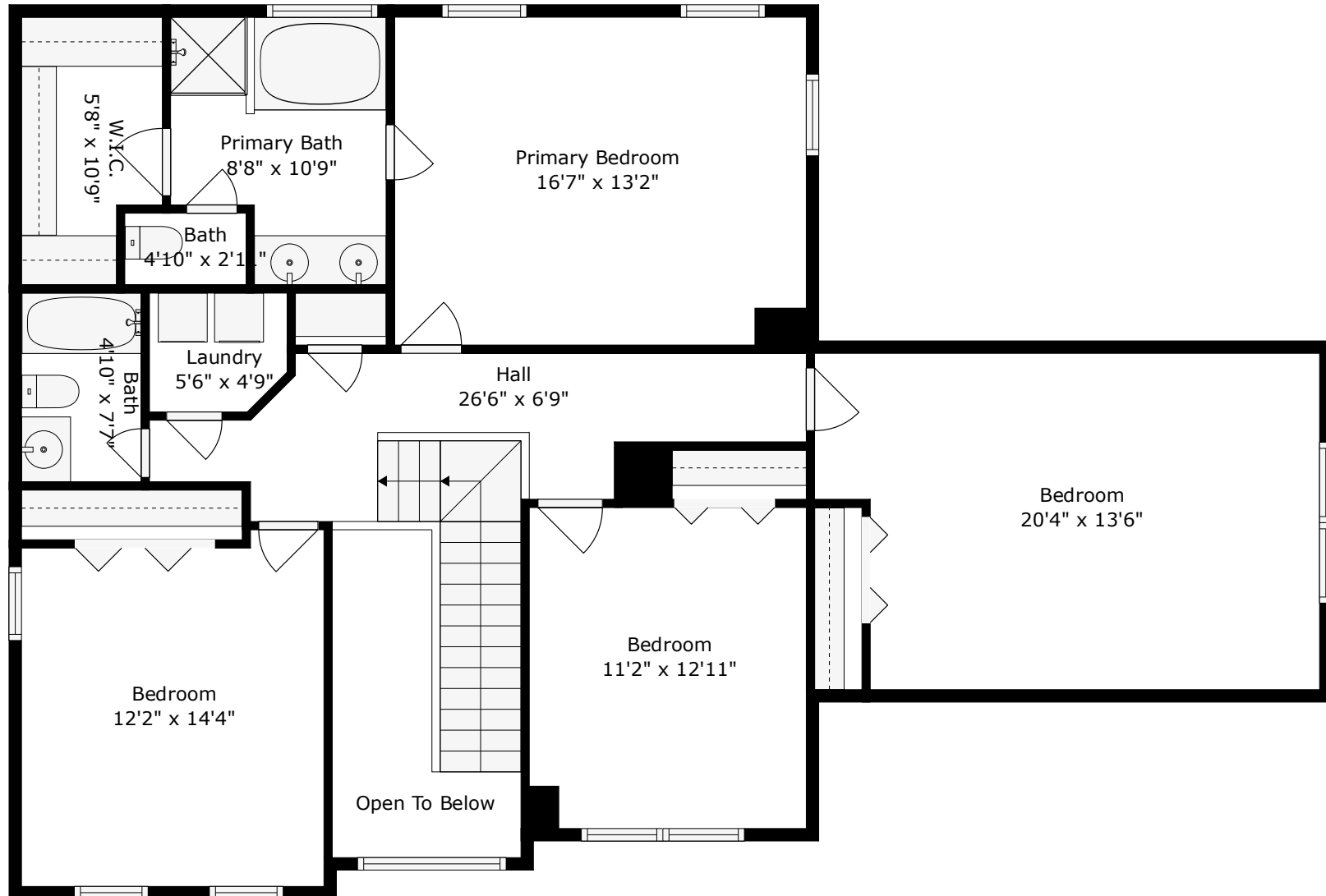
FLOOR 1: 1095 sq. ft, FLOOR 2: 1283 sq. ft

EXCLUDED AREAS: STORAGE: 38 sq. ft, GARAGE: 432 sq. ft, SCREENED PORCH: 197 sq. ft,

PORCH: 80 sq. ft, FIREPLACE: 12 sq. ft, OPEN TO BELOW: 66 sq. ft

WALLS: 219 sq. ft





Floor 2

TOTAL: 2378 sq. ft

FLOOR 1: 1095 sq. ft, FLOOR 2: 1283 sq. ft

EXCLUDED AREAS: STORAGE: 38 sq. ft, GARAGE: 432 sq. ft, SCREENED PORCH: 197 sq. ft,

PORCH: 80 sq. ft, FIREPLACE: 12 sq. ft, OPEN TO BELOW: 66 sq. ft

WALLS: 219 sq. ft

