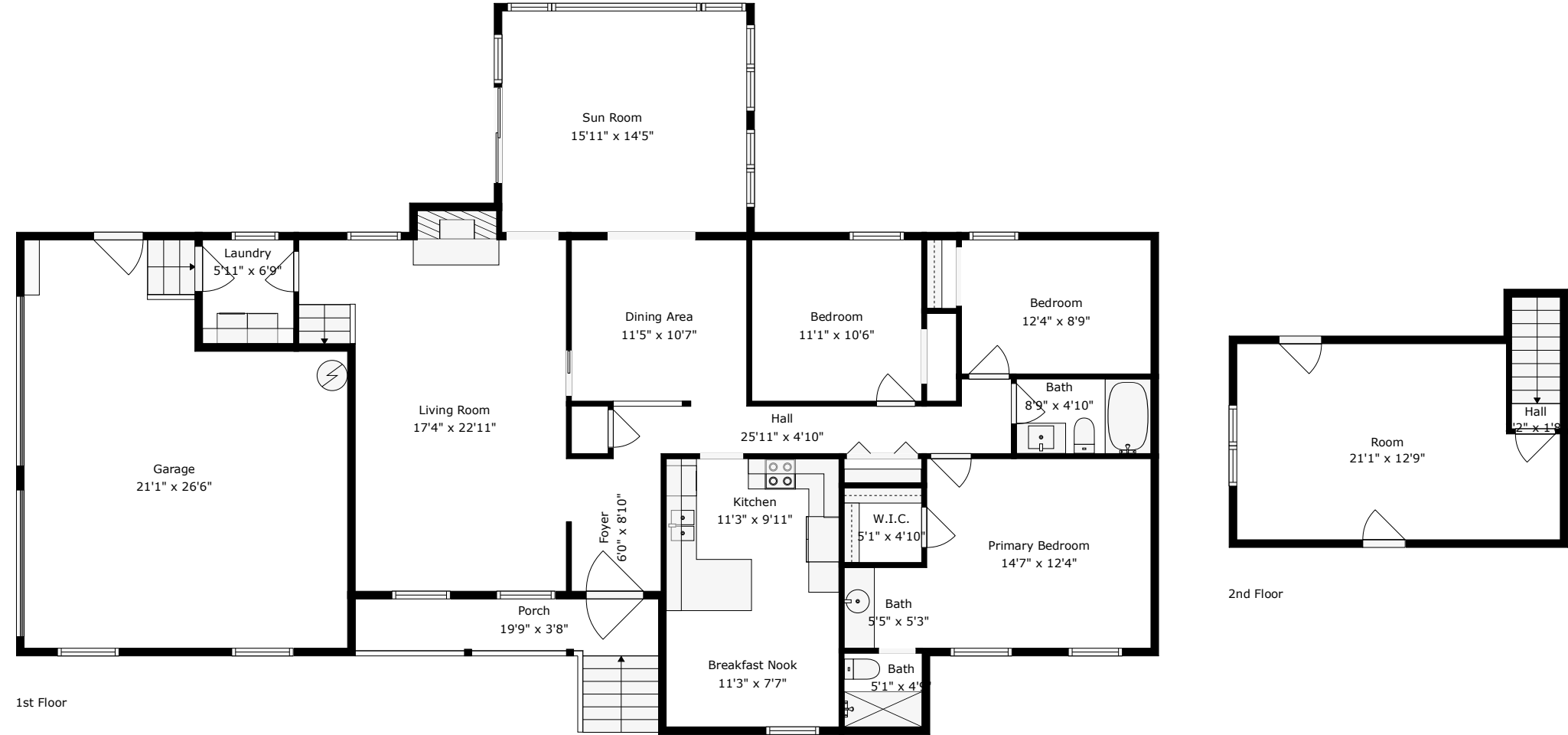


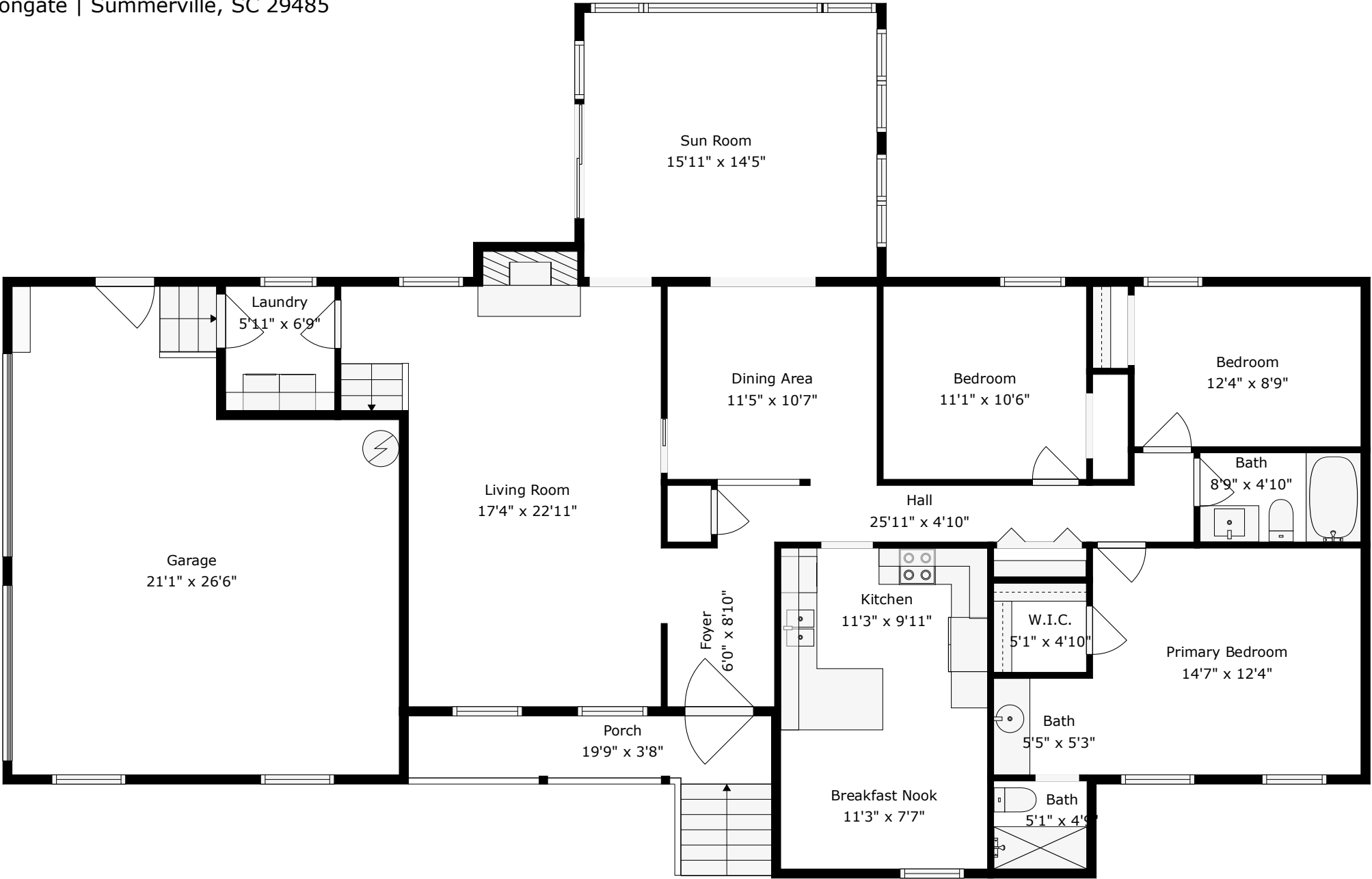
**120 Savannah Round**  
Irongate | Summerville, SC 29485



**TOTAL: 1955 sq. ft**  
1st floor: 1701 sq. ft, 2nd floor: 254 sq. ft  
EXCLUDED AREAS: GARAGE: 487 sq. ft, PORCH: 93 sq. ft, LOW CEILING: 24 sq. ft,  
WALLS: 179 sq. ft



120 Savannah Round  
Irongate | Summerville, SC 29485



Floor 1

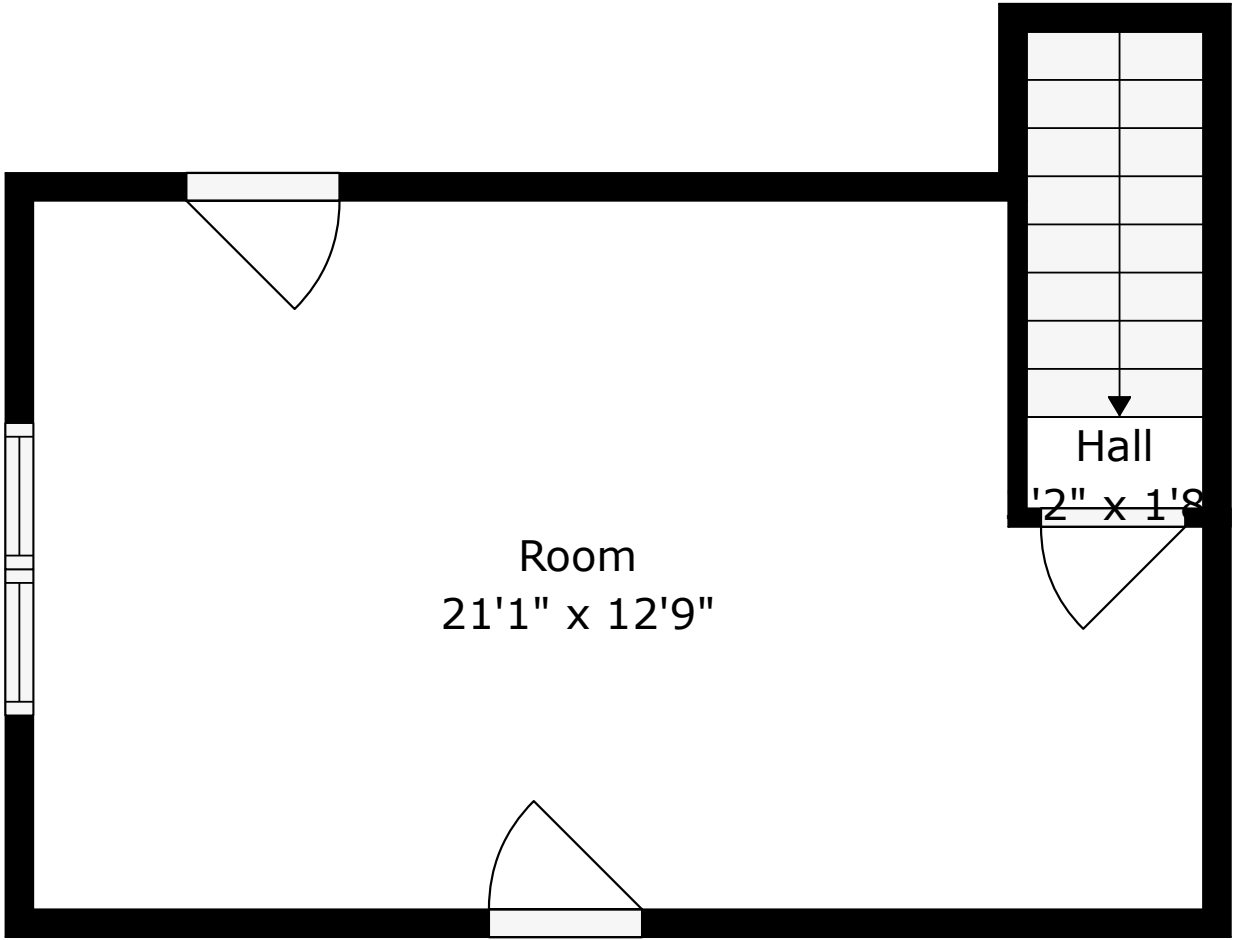
**TOTAL: 1955 sq. ft**

1st floor: 1701 sq. ft, 2nd floor: 254 sq. ft

EXCLUDED AREAS: GARAGE: 487 sq. ft, PORCH: 93 sq. ft, LOW CEILING: 24 sq. ft,  
WALLS: 179 sq. ft



**120 Savannah Round**  
Irongate | Summerville, SC 29485



Floor 2  
**TOTAL: 1955 sq. ft**  
1st floor: 1701 sq. ft, 2nd floor: 254 sq. ft  
EXCLUDED AREAS: GARAGE: 487 sq. ft, PORCH: 93 sq. ft, LOW CEILING: 24 sq. ft,  
WALLS: 179 sq. ft

