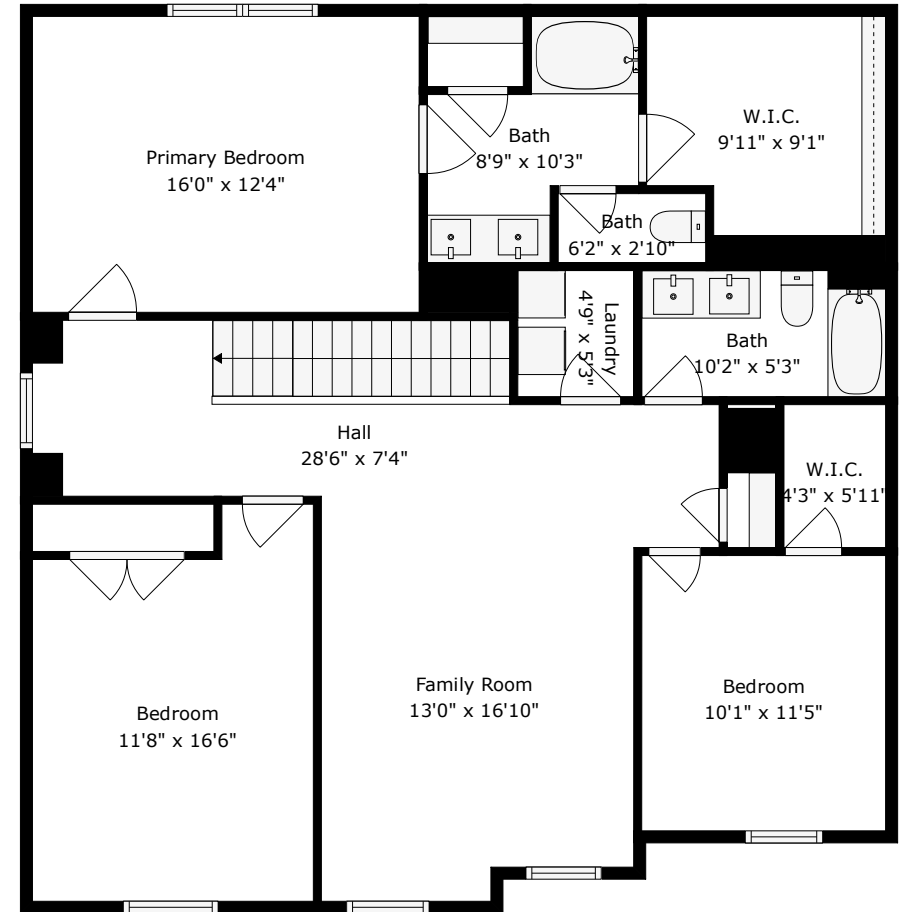


1st Floor



2nd Floor

TOTAL: 2101 sq. ft
 1st floor: 836 sq. ft, 2nd floor: 1265 sq. ft
 EXCLUDED AREAS: GARAGE: 399 sq. ft, COVERED PATIO: 161 sq. ft, PORCH: 69 sq. ft,
 WALLS: 167 sq. ft

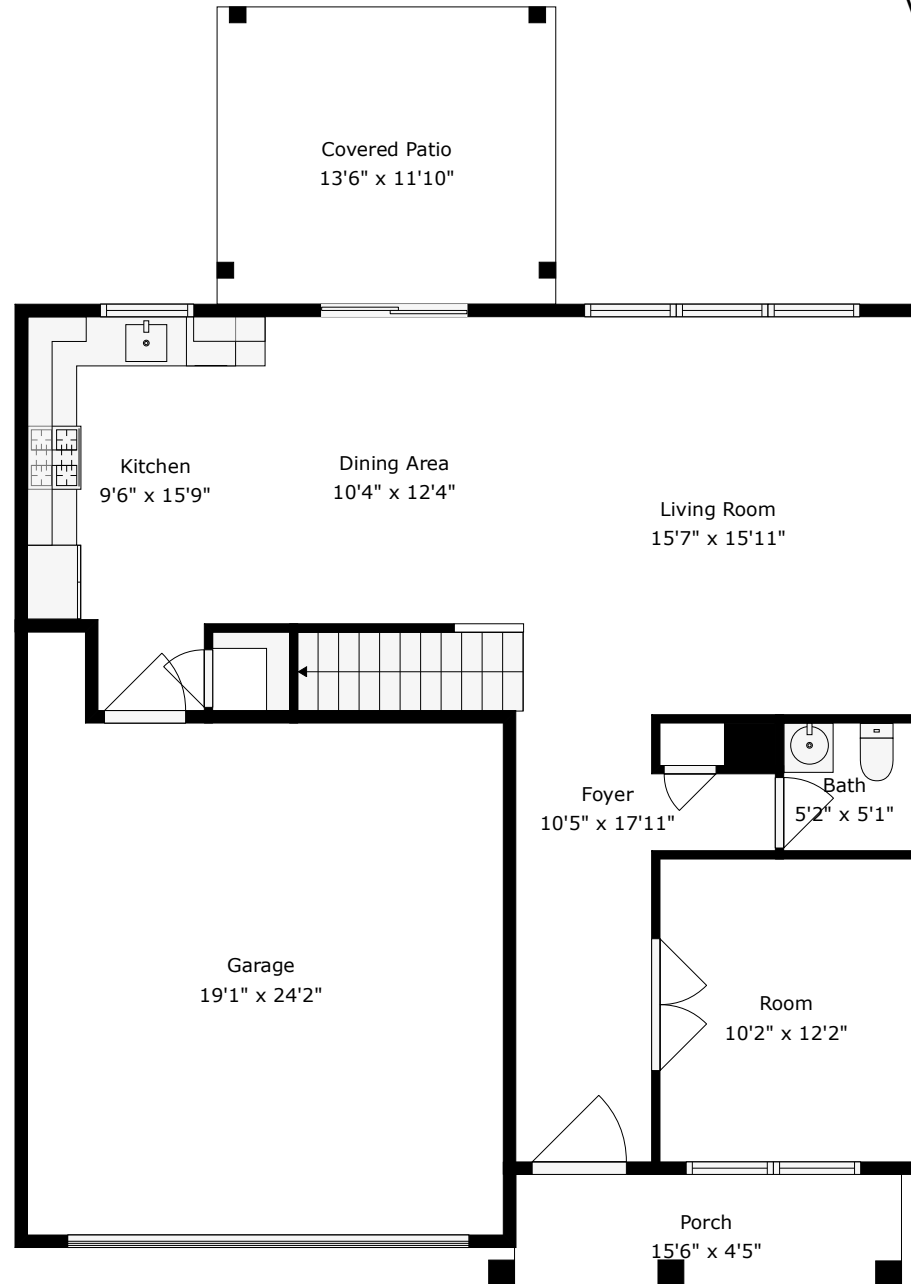






4007 Chadford Park Drive

Victoria Pointe | Summerville, SC 29485



TOTAL: 2101 sq. ft

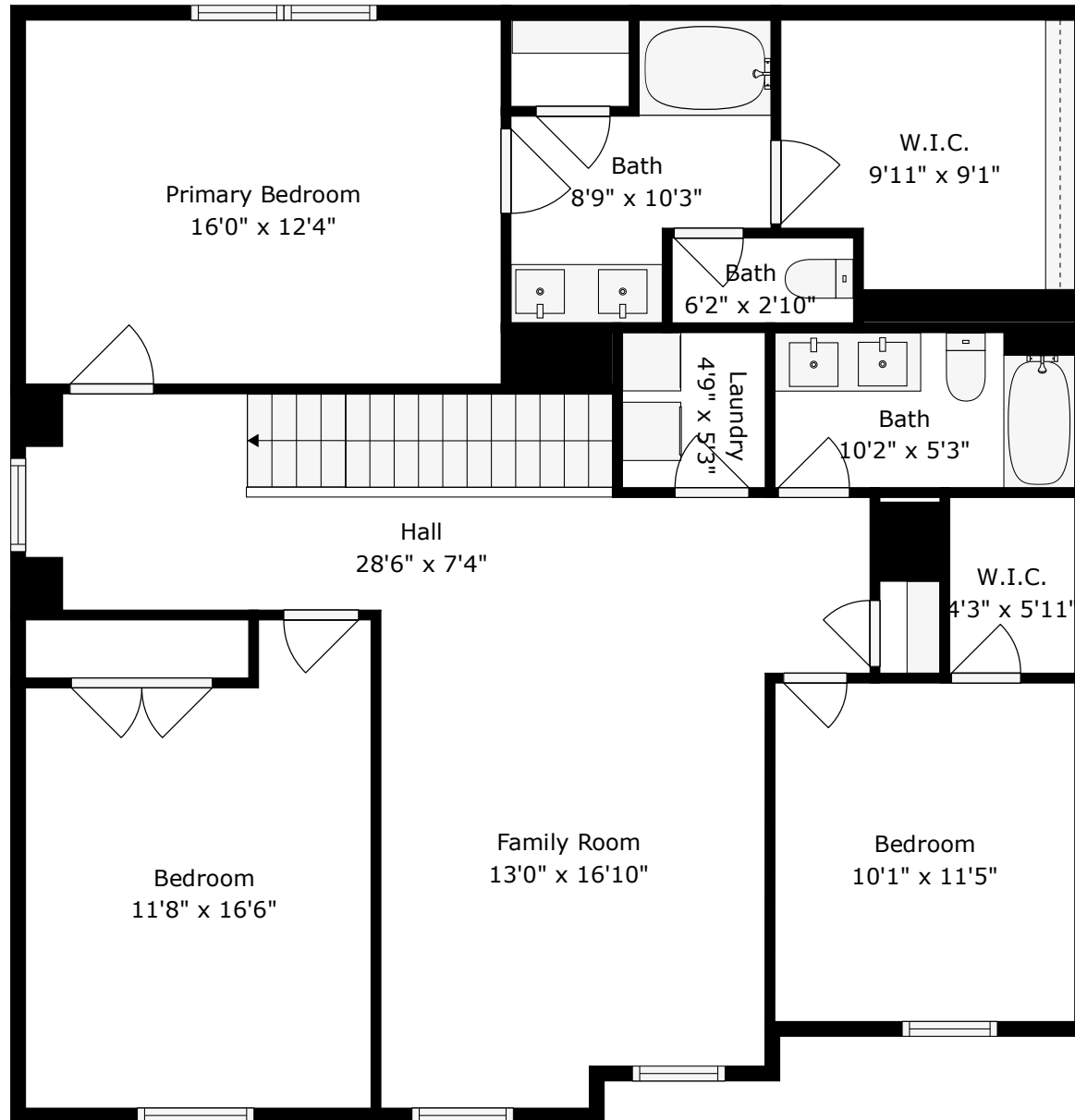
1st floor: 836 sq. ft, 2nd floor: 1265 sq. ft

EXCLUDED AREAS: GARAGE: 399 sq. ft, COVERED PATIO: 161 sq. ft, PORCH: 69 sq. ft,
WALLS: 167 sq. ft



4007 Chadford Park Drive

Victoria Pointe | Summerville, SC 29485



TOTAL: 2101 sq. ft

1st floor: 836 sq. ft, 2nd floor: 1265 sq. ft

EXCLUDED AREAS: GARAGE: 399 sq. ft, COVERED PATIO: 161 sq. ft, PORCH: 69 sq. ft,
WALLS: 167 sq. ft

