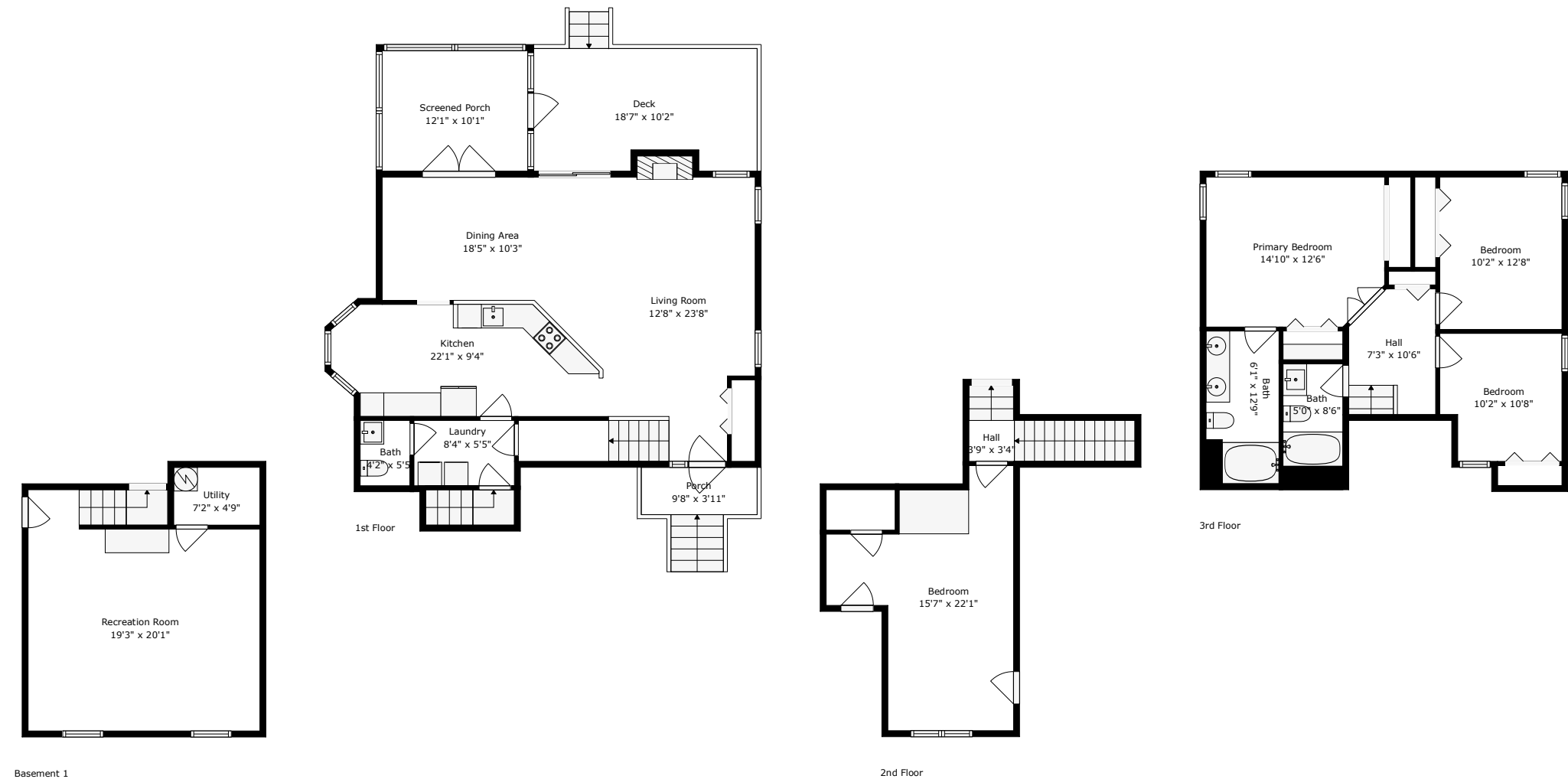


232 Knightsbridge Drive

Archdale | North Charleston, SC 29418



TOTAL: 2252 sq. ft
Basement 1: 402 sq. ft, 1st floor: 826 sq. ft, 2nd floor: 327 sq. ft, 3rd floor: 697 sq. ft
EXCLUDED AREAS: PORCH: 38 sq. ft, SCREENED PORCH: 122 sq. ft, DECK: 190 sq. ft,
FIREPLACE: 10 sq. ft, WALLS: 237 sq. ft



Archdale | North Charleston, SC 29418

418

Screened Porch
12'1" x 10'1"

Deck
18'7" x 10'2"

Dining Area
18'5" x 10'3"

Living Room
12'8" x 23'8"

Kitchen
22'1" x 9'4"

Bath
4'2" x 5'5"

Laundry
8'4" x 5'5"

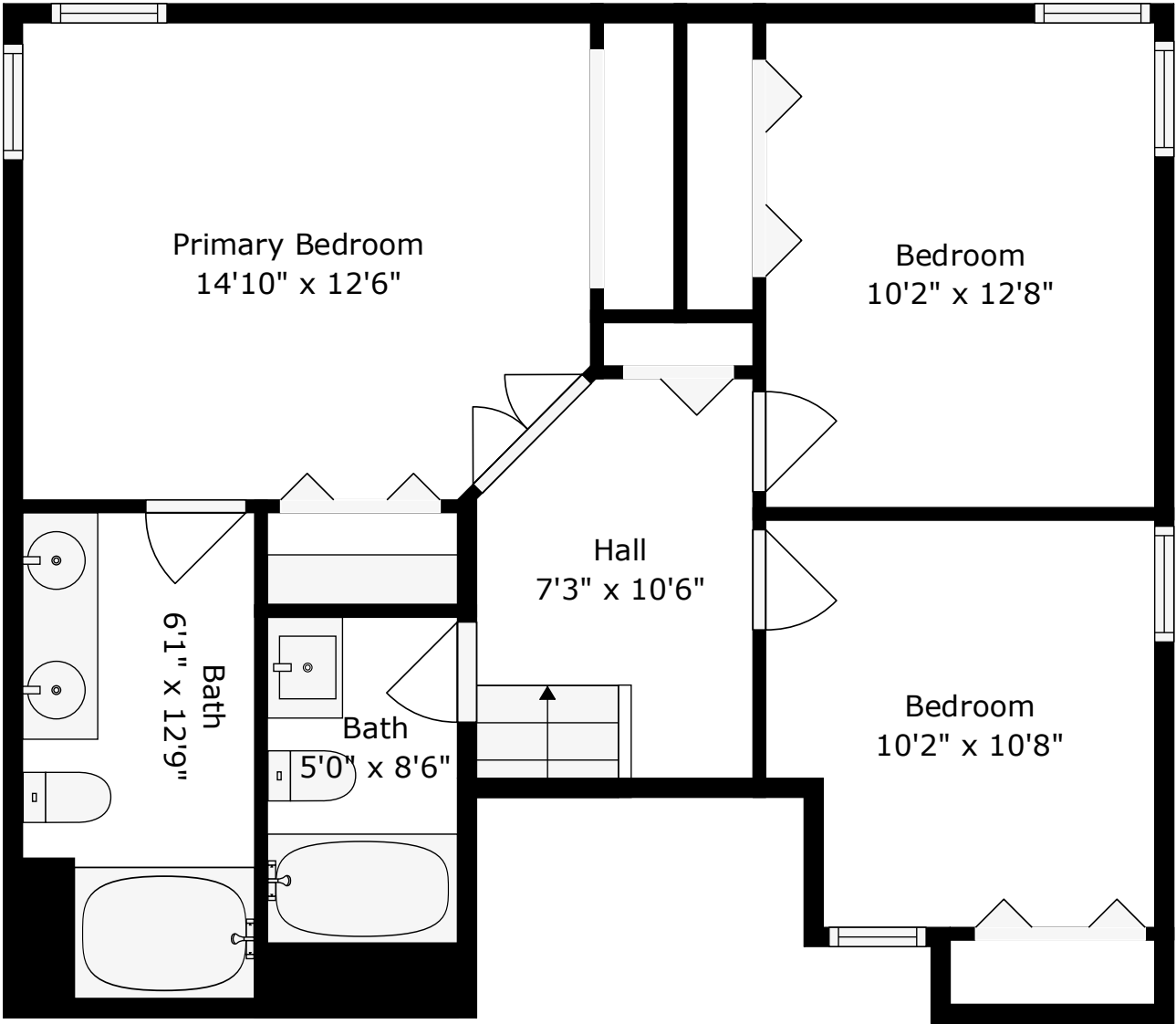
Porch
9'8" x 3'11"

TOTAL: 2252 sq. ft

Basement 1: 402 sq. ft, 1st floor: 826 sq. ft, 2nd floor: 327 sq. ft, 3rd floor: 697 sq. ft
EXCLUDED AREAS: PORCH: 38 sq. ft, SCREENED PORCH: 122 sq. ft, DECK: 190 sq. ft,
FIREPLACE: 10 sq. ft, WALLS: 237 sq. ft

232 Knightsbridge Drive

Archdale | North Charleston, SC 29418



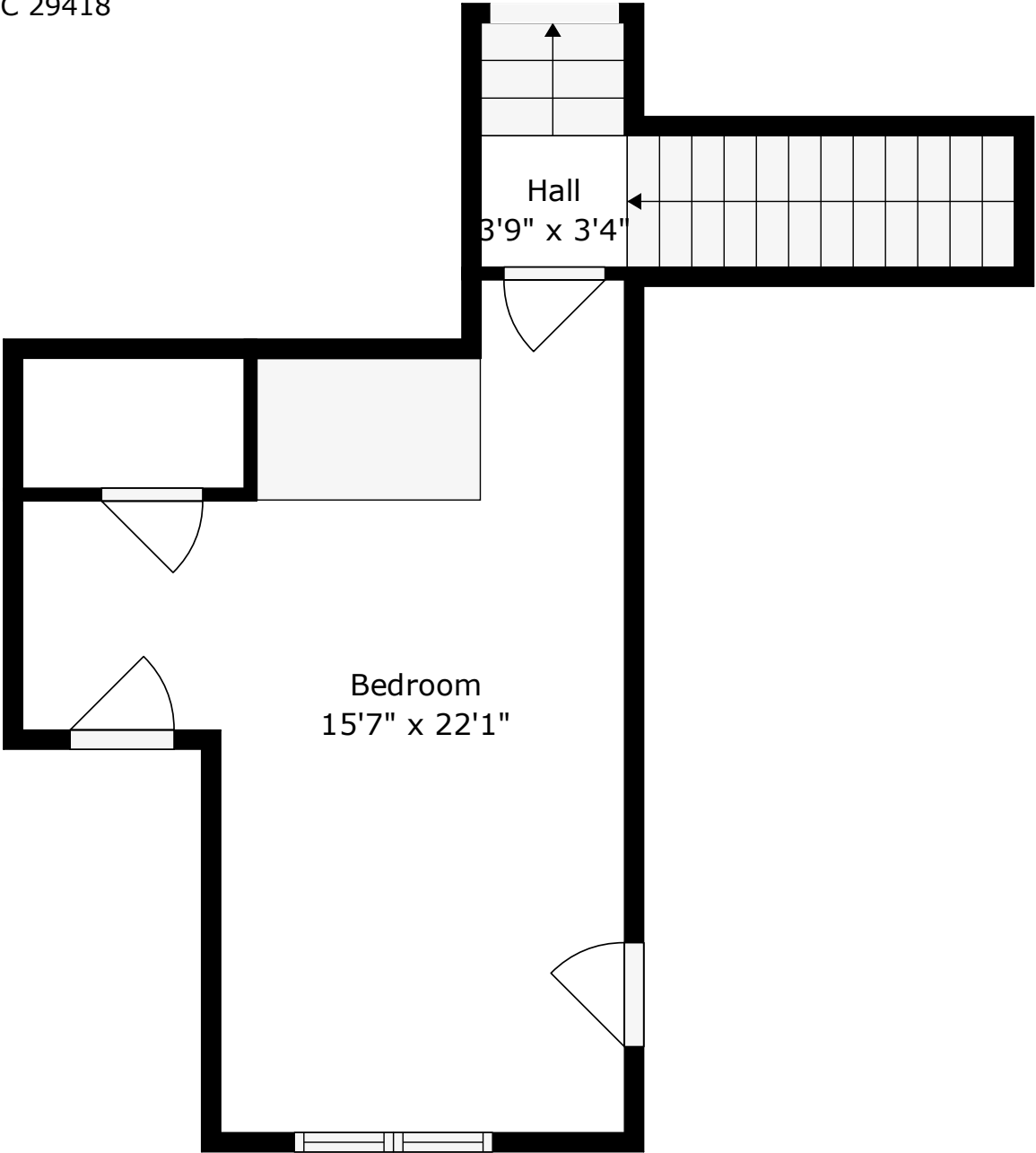
2nd Floor

TOTAL: 2252 sq. ft

Basement 1: 402 sq. ft, 1st floor: 826 sq. ft, 2nd floor: 327 sq. ft, 3rd floor: 697 sq. ft
EXCLUDED AREAS: PORCH: 38 sq. ft, SCREENED PORCH: 122 sq. ft, DECK: 190 sq. ft,
FIREPLACE: 10 sq. ft, WALLS: 237 sq. ft



232 Knightsbridge Drive
Archdale | North Charleston, SC 29418



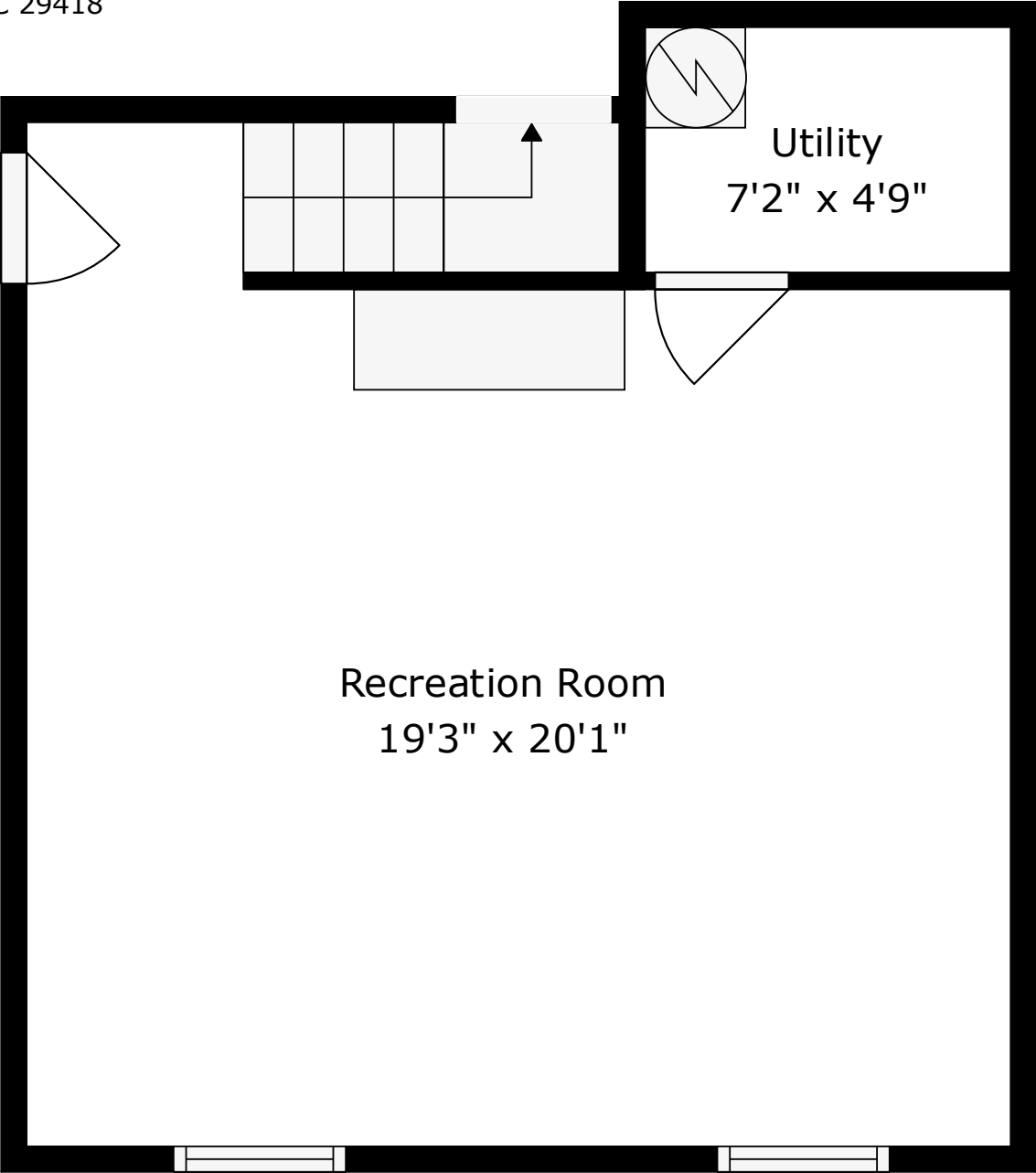
FROG

TOTAL: 2252 sq. ft

Basement 1: 402 sq. ft, 1st floor: 826 sq. ft, 2nd floor: 327 sq. ft, 3rd floor: 697 sq. ft
EXCLUDED AREAS: PORCH: 38 sq. ft, SCREENED PORCH: 122 sq. ft, DECK: 190 sq. ft,
FIREPLACE: 10 sq. ft, WALLS: 237 sq. ft



232 Knightsbridge Drive
Archdale | North Charleston, SC 29418



Converted Garage

TOTAL: 2252 sq. ft

Basement 1: 402 sq. ft, 1st floor: 826 sq. ft, 2nd floor: 327 sq. ft, 3rd floor: 697 sq. ft
EXCLUDED AREAS: PORCH: 38 sq. ft, SCREENED PORCH: 122 sq. ft, DECK: 190 sq. ft,
FIREPLACE: 10 sq. ft, WALLS: 237 sq. ft

