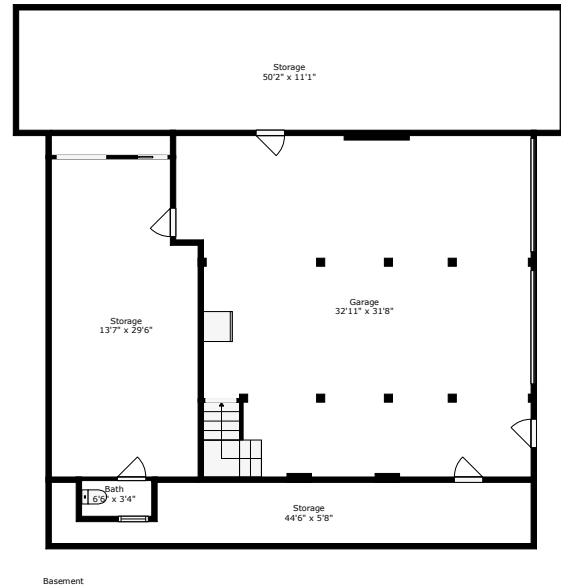
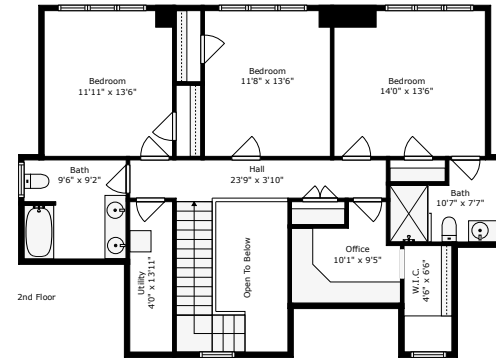
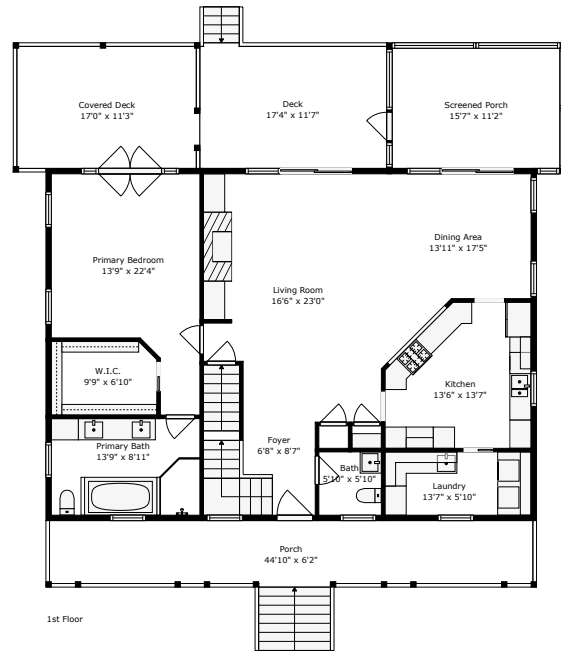


# 599 Two Mile Run

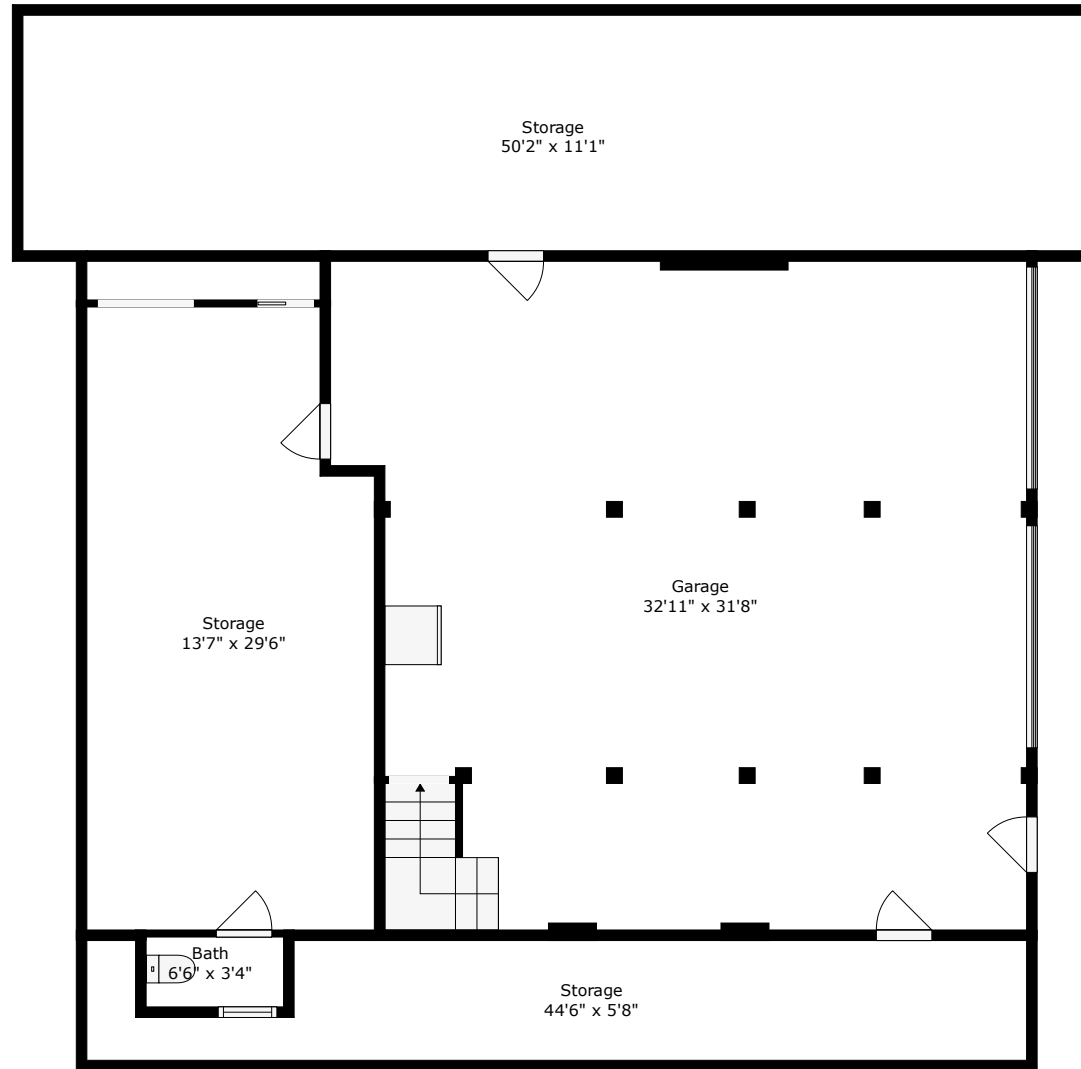
Grimball Gates | Johns Island, SC 29455



**TOTAL: 2446 sq. ft**

Basement: 0 sq. ft, 1st floor: 1408 sq. ft, 2nd floor: 1038 sq. ft,  
 EXCLUDED AREAS: TOILET: 31 sq. ft, UNDEFINED: 29 sq. ft, STORAGE: 1168 sq. ft,  
 GARAGE: 984 sq. ft, SCREENED PORCH: 174 sq. ft, PORCH: 303 sq. ft,  
 DECK: 208 sq. ft, COVERED DECK: 189 sq. ft, UTILITY: 55 sq. ft,  
 OPEN TO BELOW: 83 sq. ft, WALLS: 332 sq. ft

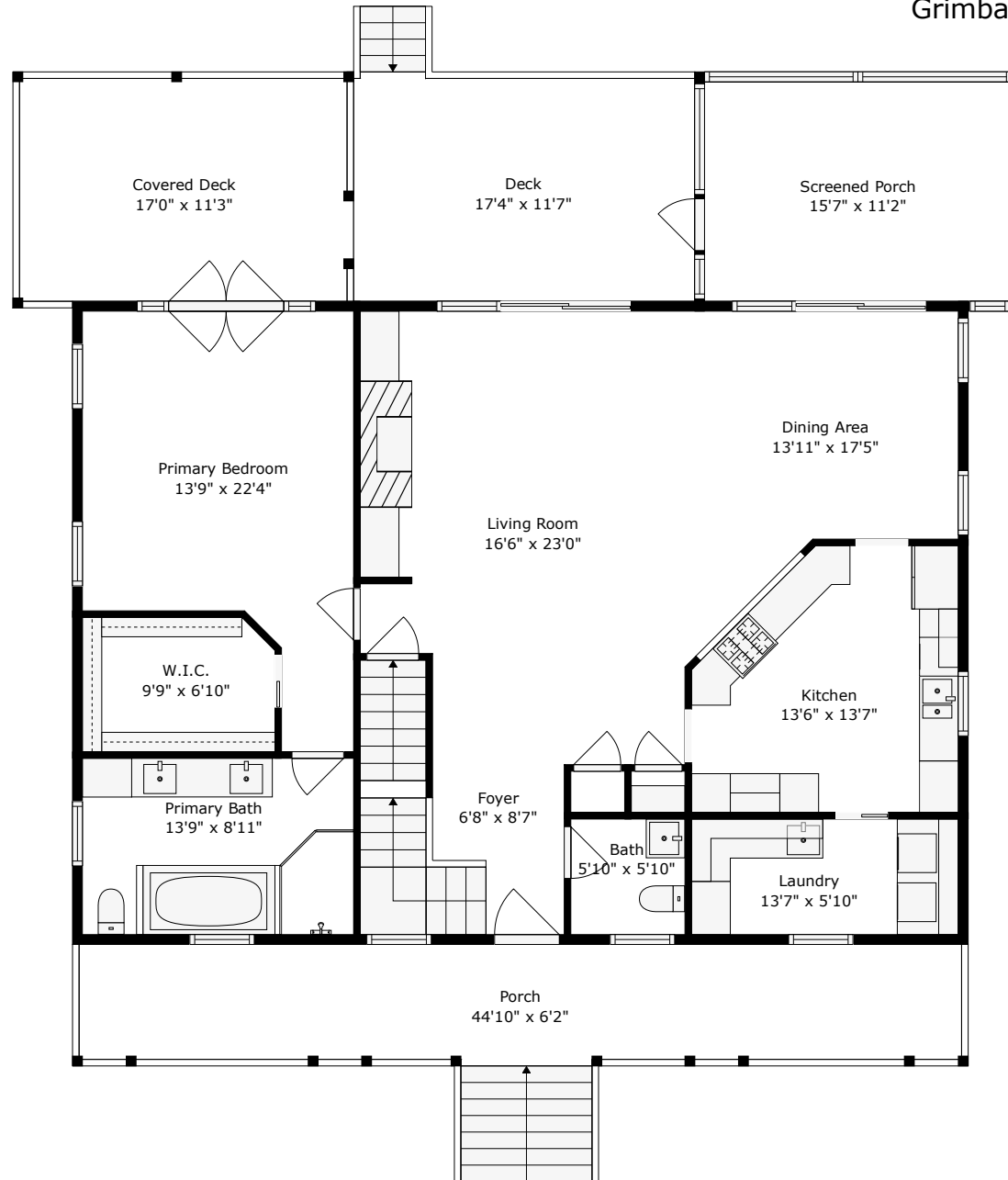




**TOTAL: 2446 sq. ft**

Basement: 0 sq. ft, 1st floor: 1408 sq. ft, 2nd floor: 1038 sq. ft  
EXCLUDED AREAS: TOILET: 31 sq. ft, UNDEFINED: 29 sq. ft, STORAGE: 1168 sq. ft,  
GARAGE: 984 sq. ft, SCREENED PORCH: 174 sq. ft, PORCH: 303 sq. ft,  
DECK: 208 sq. ft, COVERED DECK: 189 sq. ft, UTILITY: 55 sq. ft,  
OPEN TO BELOW: 83 sq. ft, WALLS: 332 sq. ft

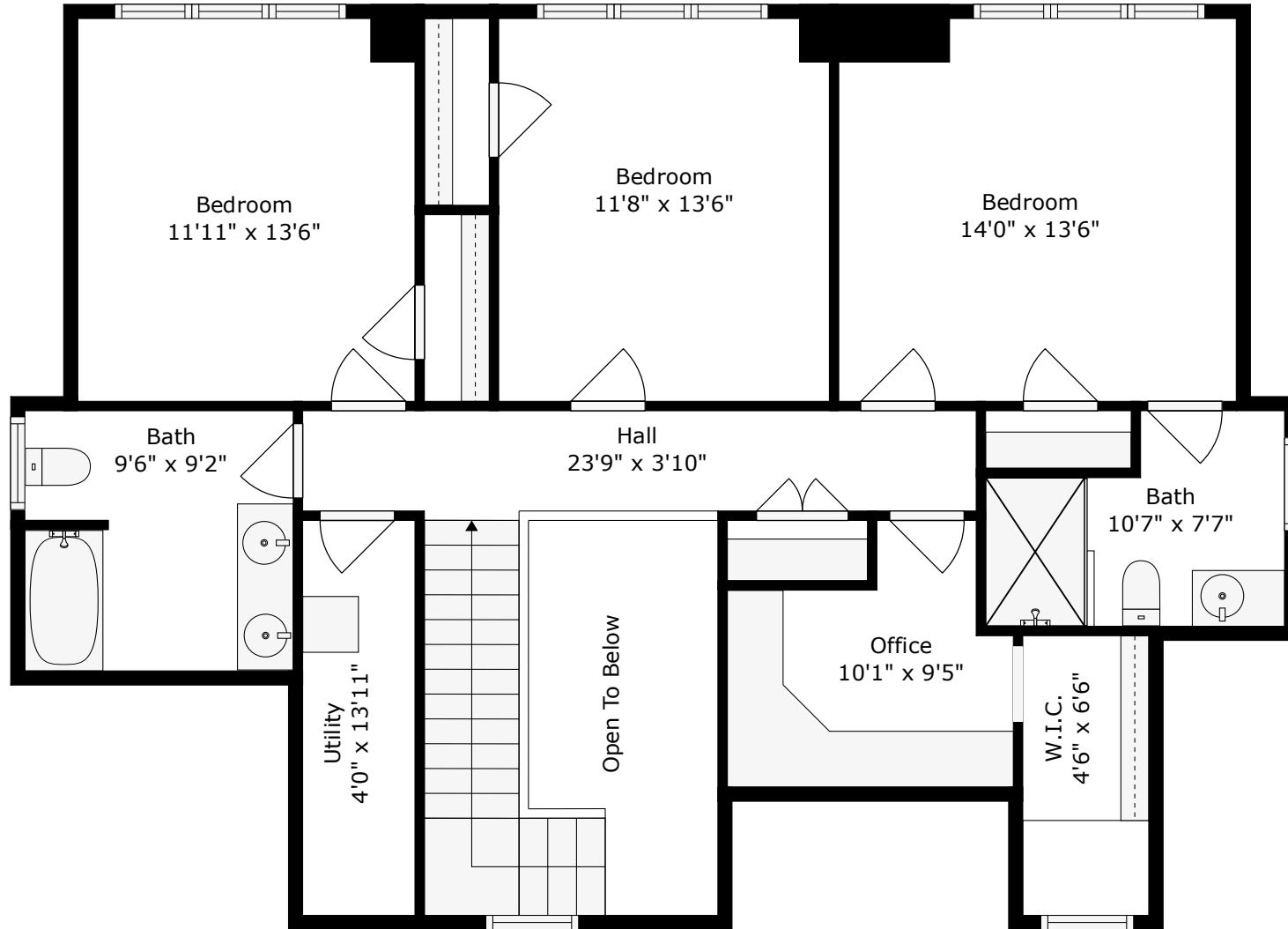




**TOTAL: 2446 sq. ft**

Basement: 0 sq. ft, 1st floor: 1408 sq. ft, 2nd floor: 1038 sq. ft  
 EXCLUDED AREAS: TOILET: 31 sq. ft, UNDEFINED: 29 sq. ft, STORAGE: 1168 sq. ft,  
 GARAGE: 984 sq. ft, SCREENED PORCH: 174 sq. ft, PORCH: 303 sq. ft,  
 DECK: 208 sq. ft, COVERED DECK: 189 sq. ft, UTILITY: 55 sq. ft,  
 OPEN TO BELOW: 83 sq. ft, WALLS: 332 sq. ft





**TOTAL: 2446 sq. ft**

Basement: 0 sq. ft, 1st floor: 1408 sq. ft, 2nd floor: 1038 sq. ft  
EXCLUDED AREAS: TOILET: 31 sq. ft, UNDEFINED: 29 sq. ft, STORAGE: 1168 sq. ft,  
GARAGE: 984 sq. ft, SCREENED PORCH: 174 sq. ft, PORCH: 303 sq. ft,  
DECK: 208 sq. ft, COVERED DECK: 189 sq. ft, UTILITY: 55 sq. ft,  
OPEN TO BELOW: 83 sq. ft, WALLS: 332 sq. ft

