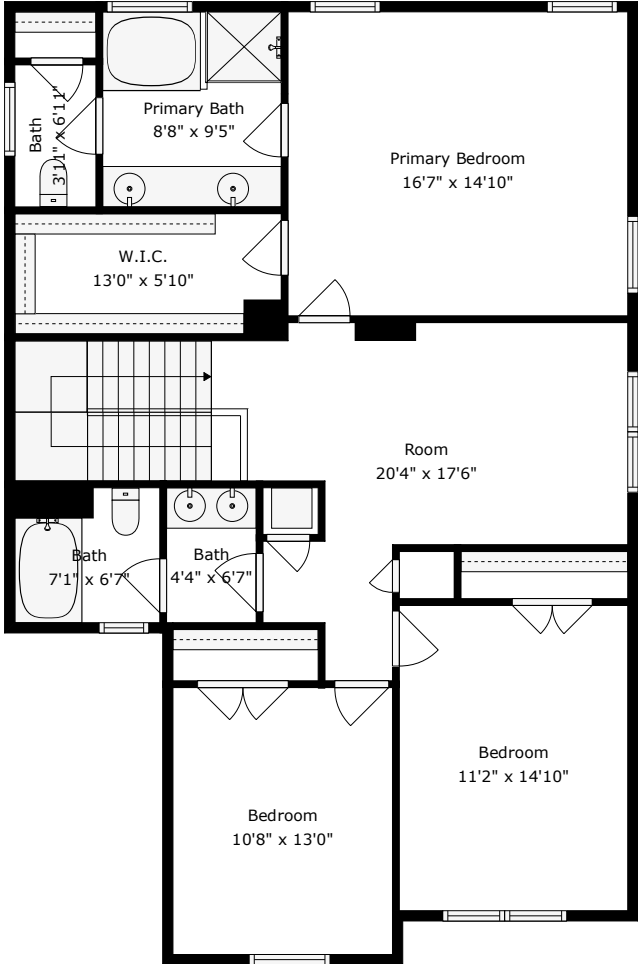


1st Floor

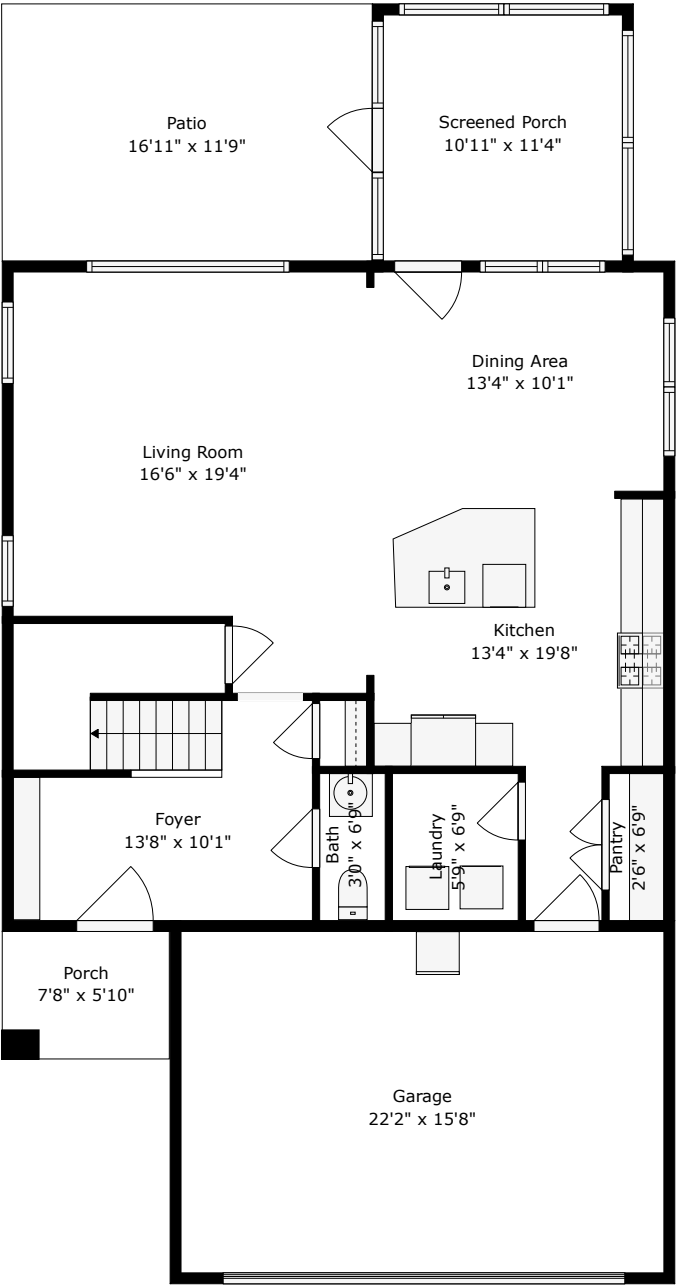


2nd Floor

TOTAL: 2114 sq. ft
1st floor: 890 sq. ft, 2nd floor: 1224 sq. ft
EXCLUDED AREAS: PATIO: 201 sq. ft, PORCH: 45 sq. ft, SCREENED PORCH: 124 sq. ft,
GARAGE: 348 sq. ft, WALLS: 182 sq. ft



456 Northern Red Oak Drive
Cane Bay Plantation | Summerville, SC 29486



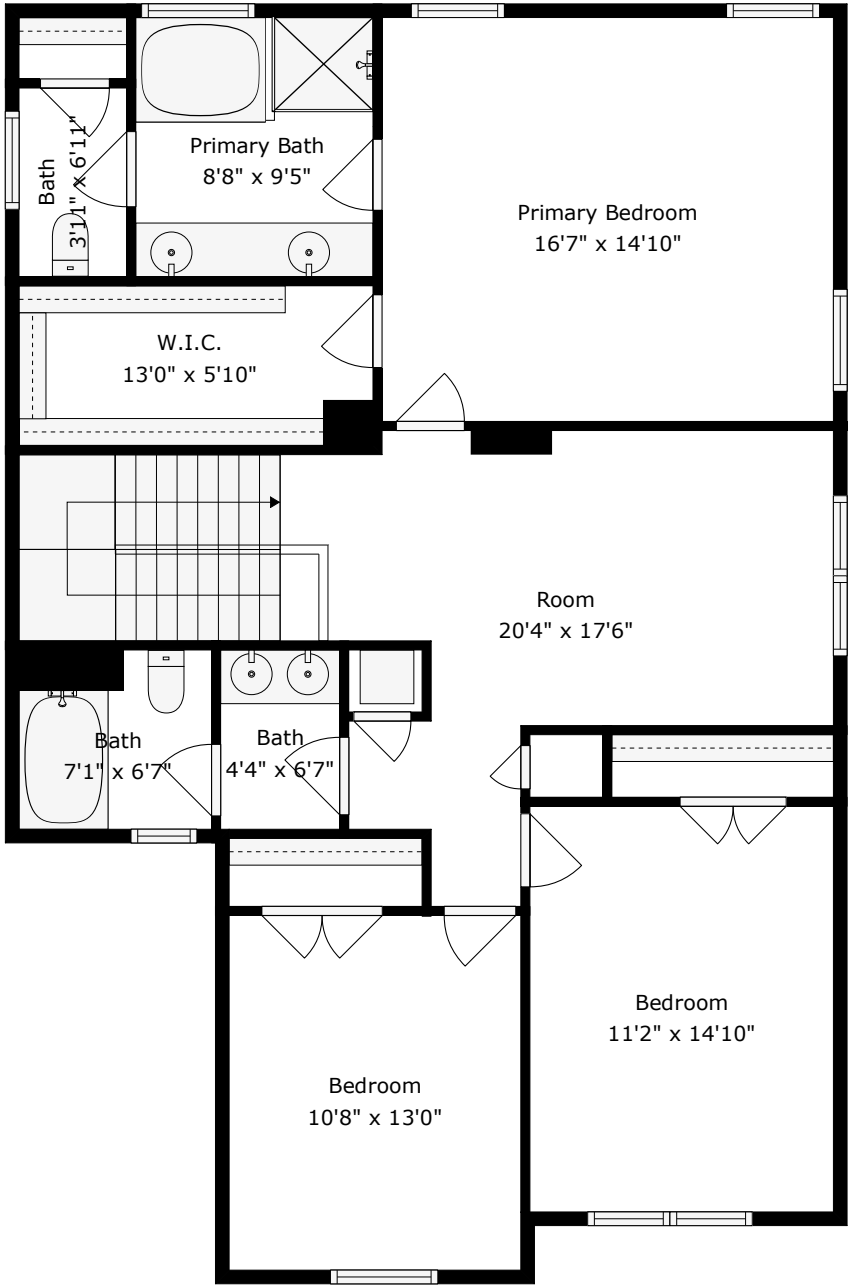
Floor 1

TOTAL: 2114 sq. ft

1st floor: 890 sq. ft, 2nd floor: 1224 sq. ft

EXCLUDED AREAS: PATIO: 201 sq. ft, PORCH: 45 sq. ft, SCREENED PORCH: 124 sq. ft,
GARAGE: 348 sq. ft, WALLS: 182 sq. ft





Floor 2

TOTAL: 2114 sq. ft

1st floor: 890 sq. ft, 2nd floor: 1224 sq. ft

EXCLUDED AREAS: PATIO: 201 sq. ft, PORCH: 45 sq. ft, SCREENED PORCH: 124 sq. ft,
GARAGE: 348 sq. ft, WALLS: 182 sq. ft

