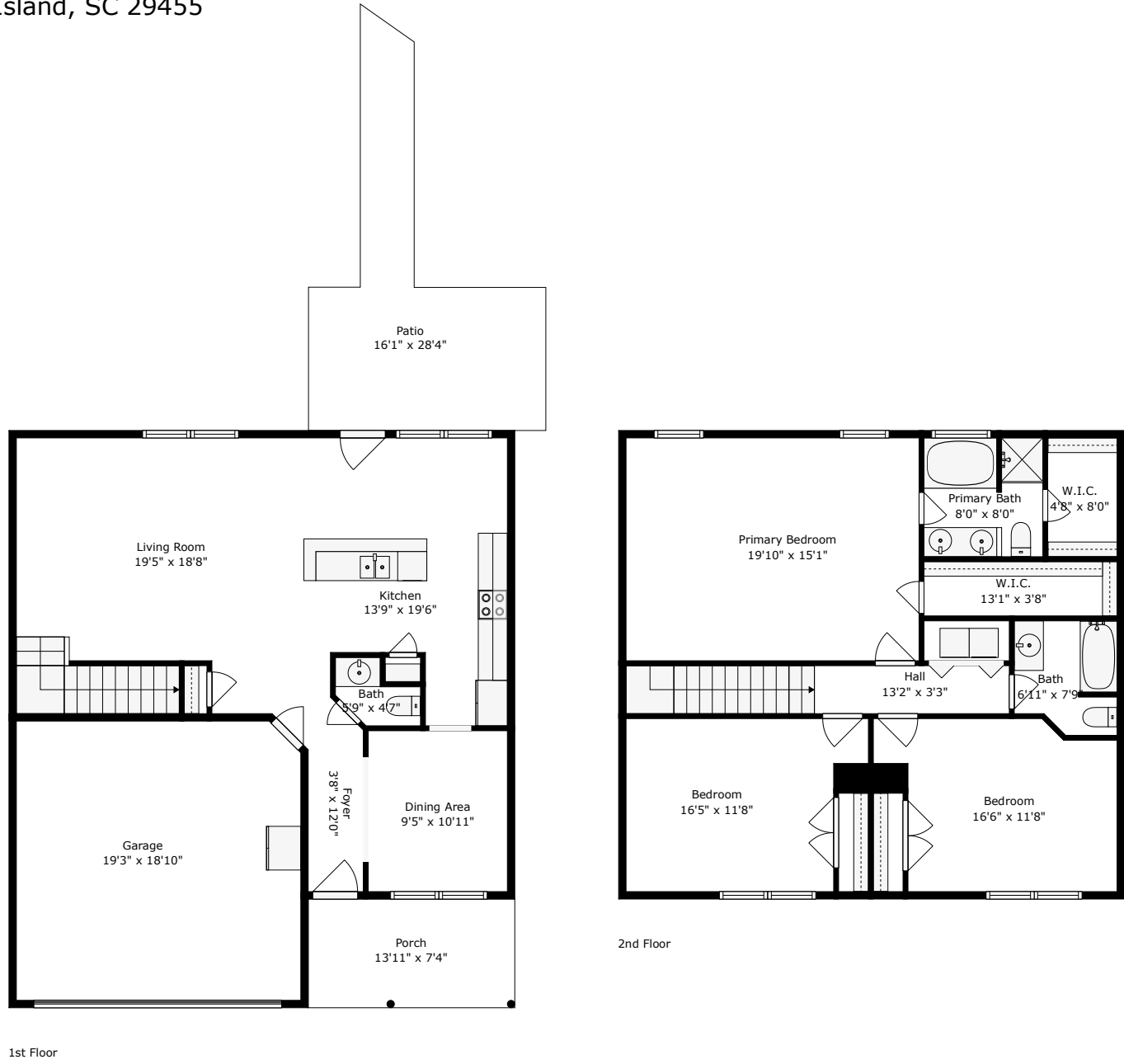


3429 Berryhill Road

Cedar Springs | Johns Island, SC 29455



1st Floor

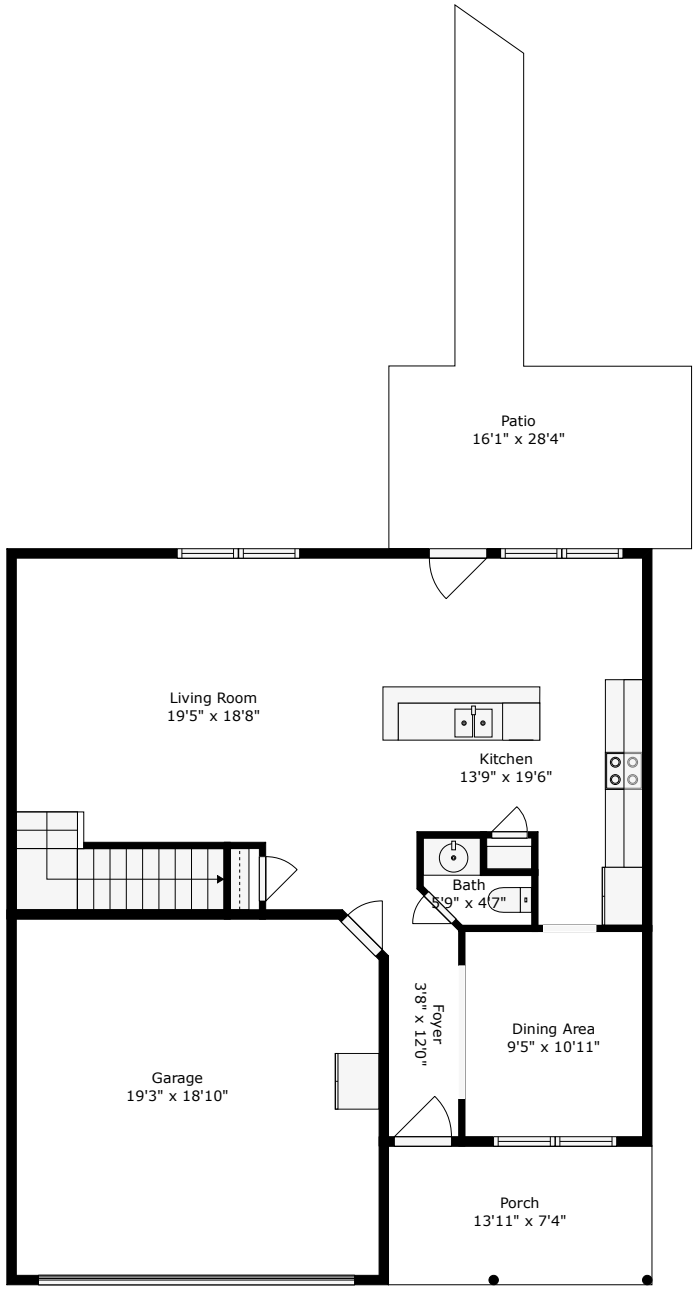
2nd Floor

TOTAL: 1802 sq. ft
 1st floor: 784 sq. ft, 2nd floor: 1018 sq. ft
 EXCLUDED AREAS: GARAGE: 361 sq. ft, PORCH: 103 sq. ft, PATIO: 220 sq. ft,
 WALLS: 152 sq. ft



3429 Berryhill Road

Cedar Springs | Johns Island, SC 29455



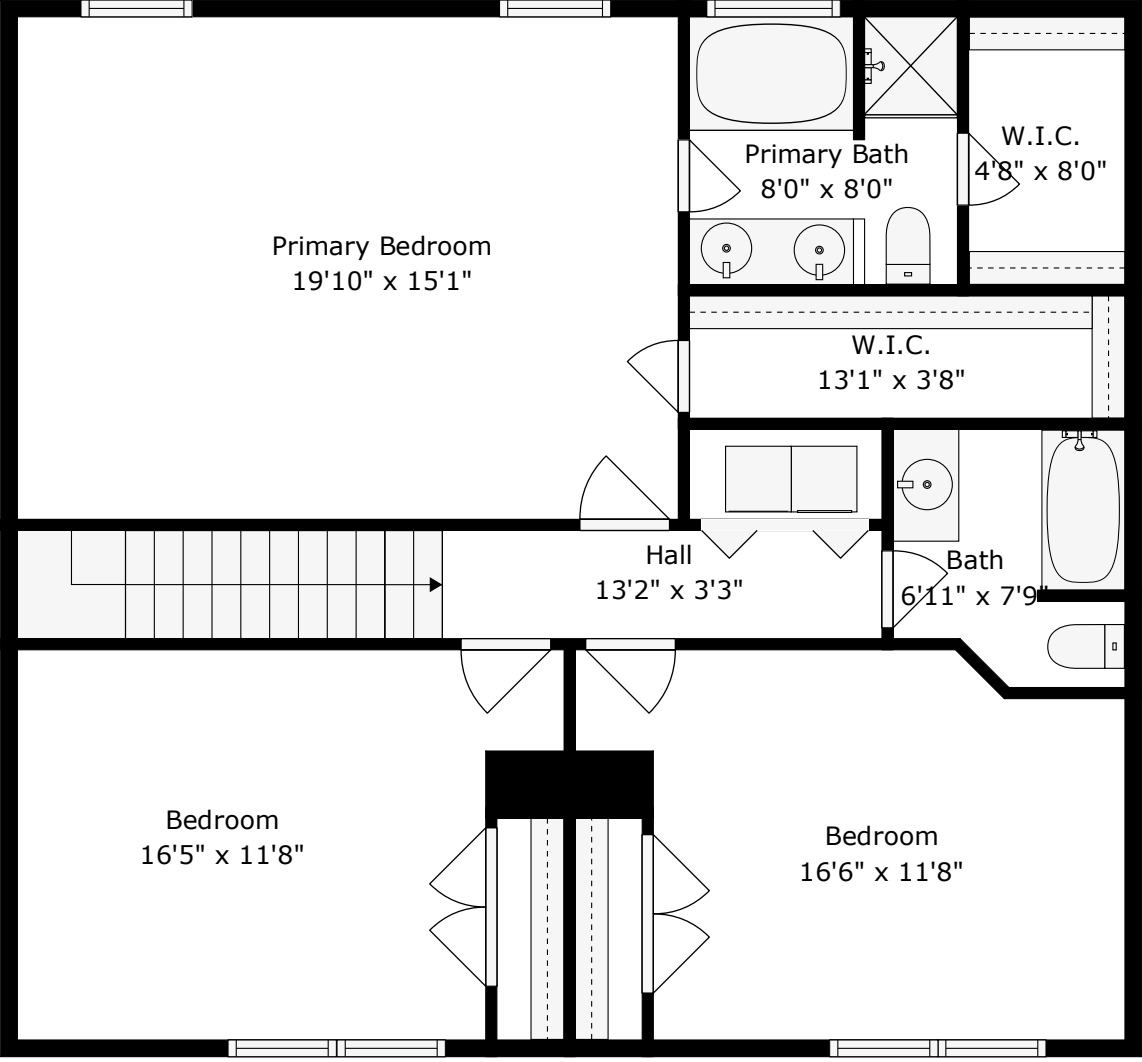
TOTAL: 1802 sq. ft
1st floor: 784 sq. ft, 2nd floor: 1018 sq. ft
EXCLUDED AREAS: GARAGE: 361 sq. ft, PORCH: 103 sq. ft, PATIO: 220 sq. ft,
WALLS: 152 sq. ft

Floor Plan Created By Cubicasa App. Measurements Deemed Highly Reliable But Not Guaranteed.



3429 Berryhill Road

Cedar Springs | Johns Island, SC 29455



TOTAL: 1802 sq. ft
1st floor: 784 sq. ft, 2nd floor: 1018 sq. ft
EXCLUDED AREAS: GARAGE: 361 sq. ft, PORCH: 103 sq. ft, PATIO: 220 sq. ft,
WALLS: 152 sq. ft

Floor Plan Created By Cubicasa App. Measurements Deemed Highly Reliable But Not Guaranteed.

