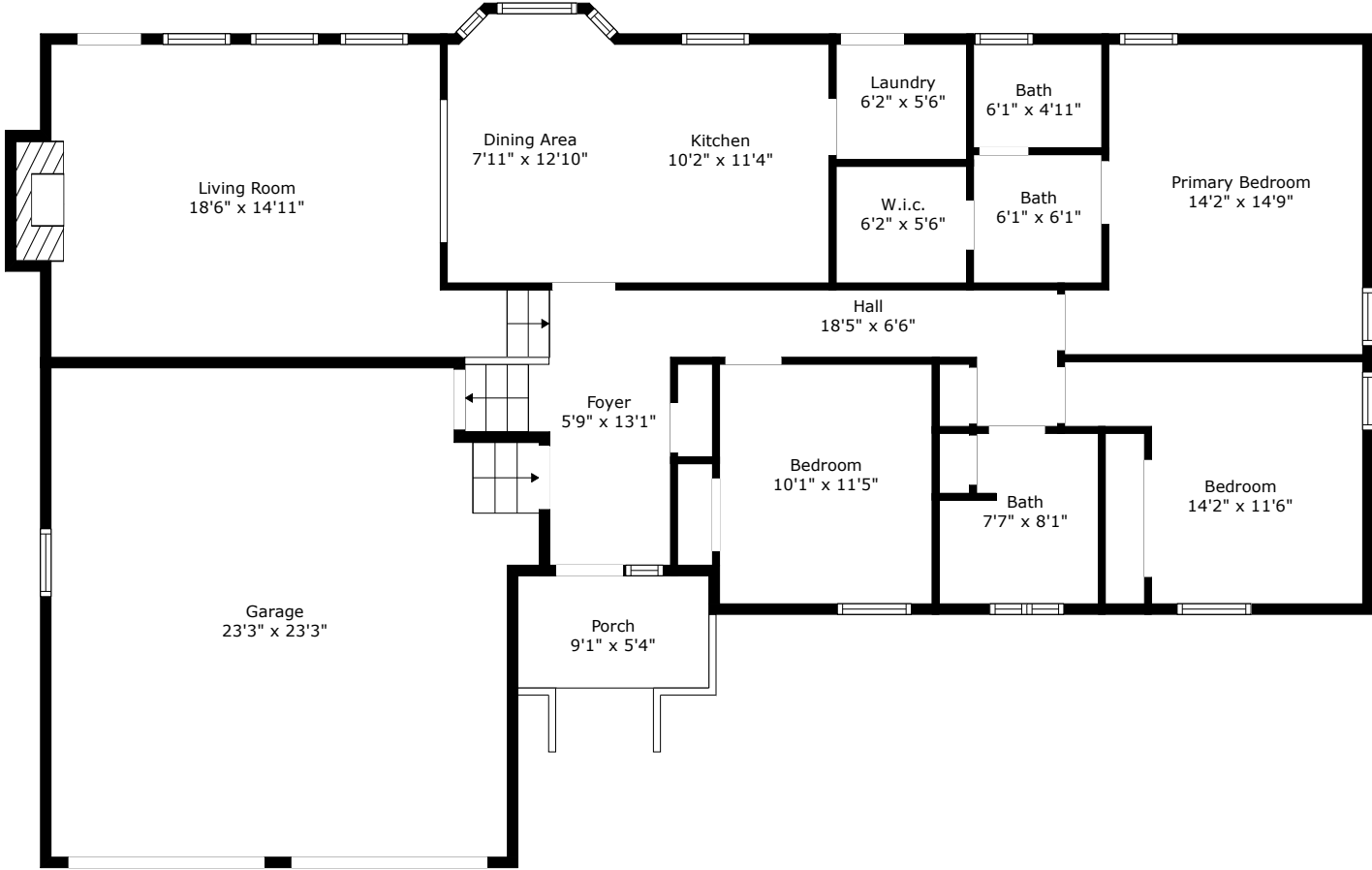
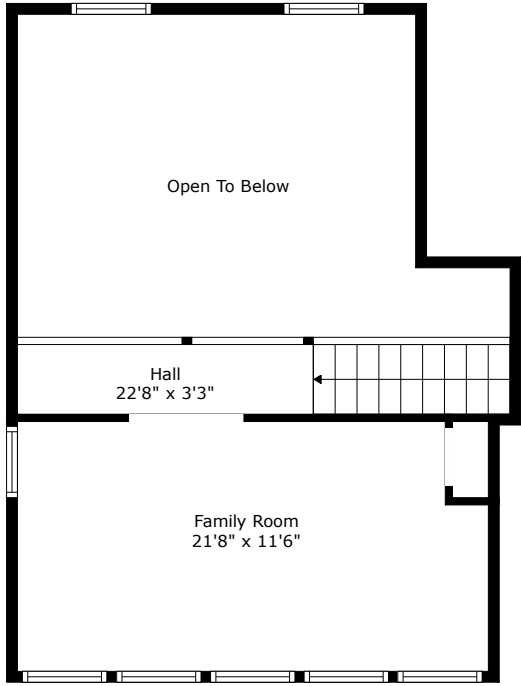


107 Springfarm Place

Irongate | Summerville, SC 29485



Floor 1



Floor 2

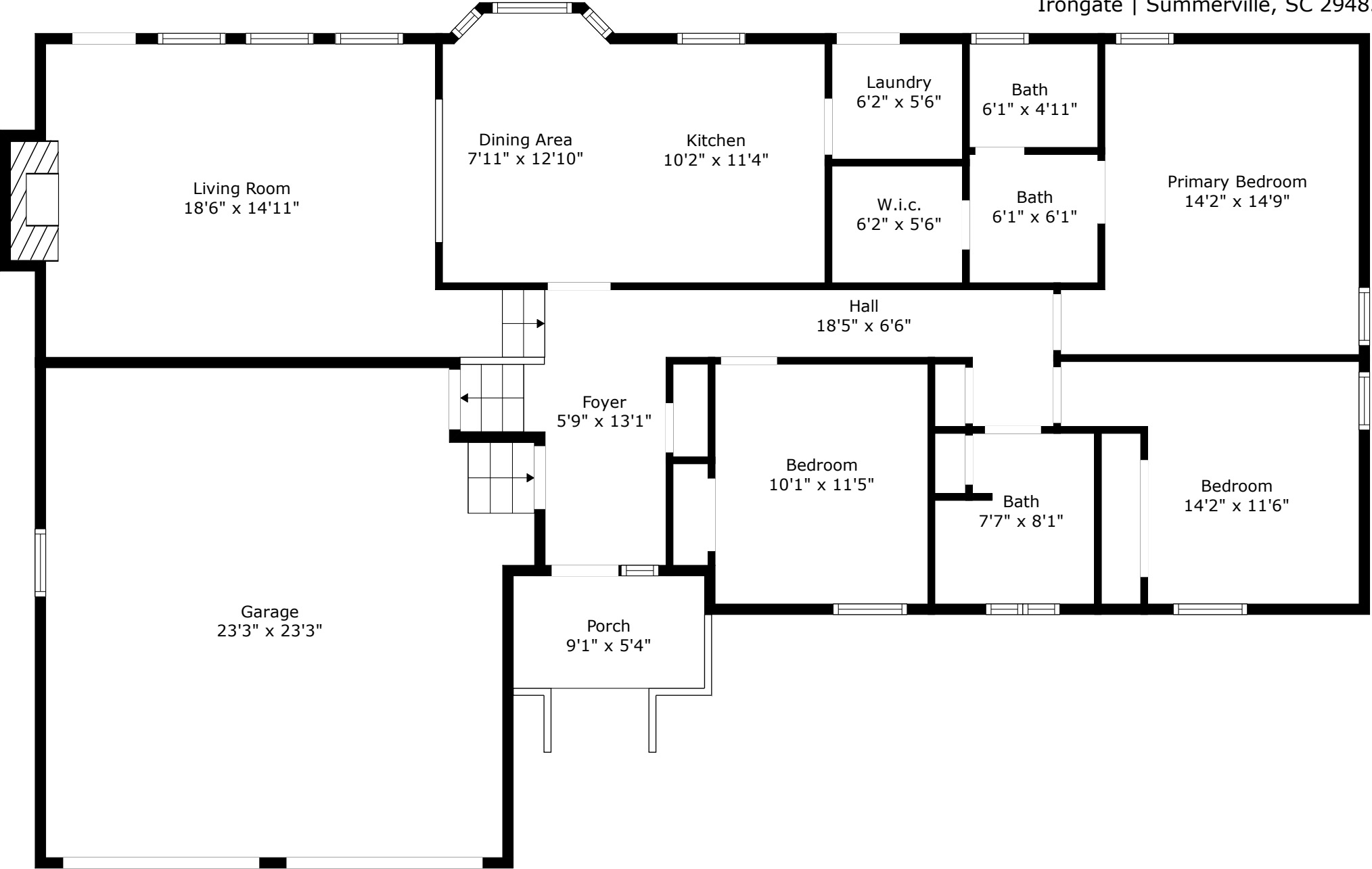
TOTAL: 1732 sq. ft
FLOOR 1: 1394 sq. ft, FLOOR 2: 338 sq. ft
EXCLUDED AREAS: PORCH: 49 sq. ft, GARAGE: 505 sq. ft, FIREPLACE: 11 sq. ft,
OPEN TO BELOW: 287 sq. ft

Floor Plan Created by Cubicasa App. Measurements Deemed Highly Reliable But Not Guaranteed.



107 Springfarm Place

Irongate | Summerville, SC 29485

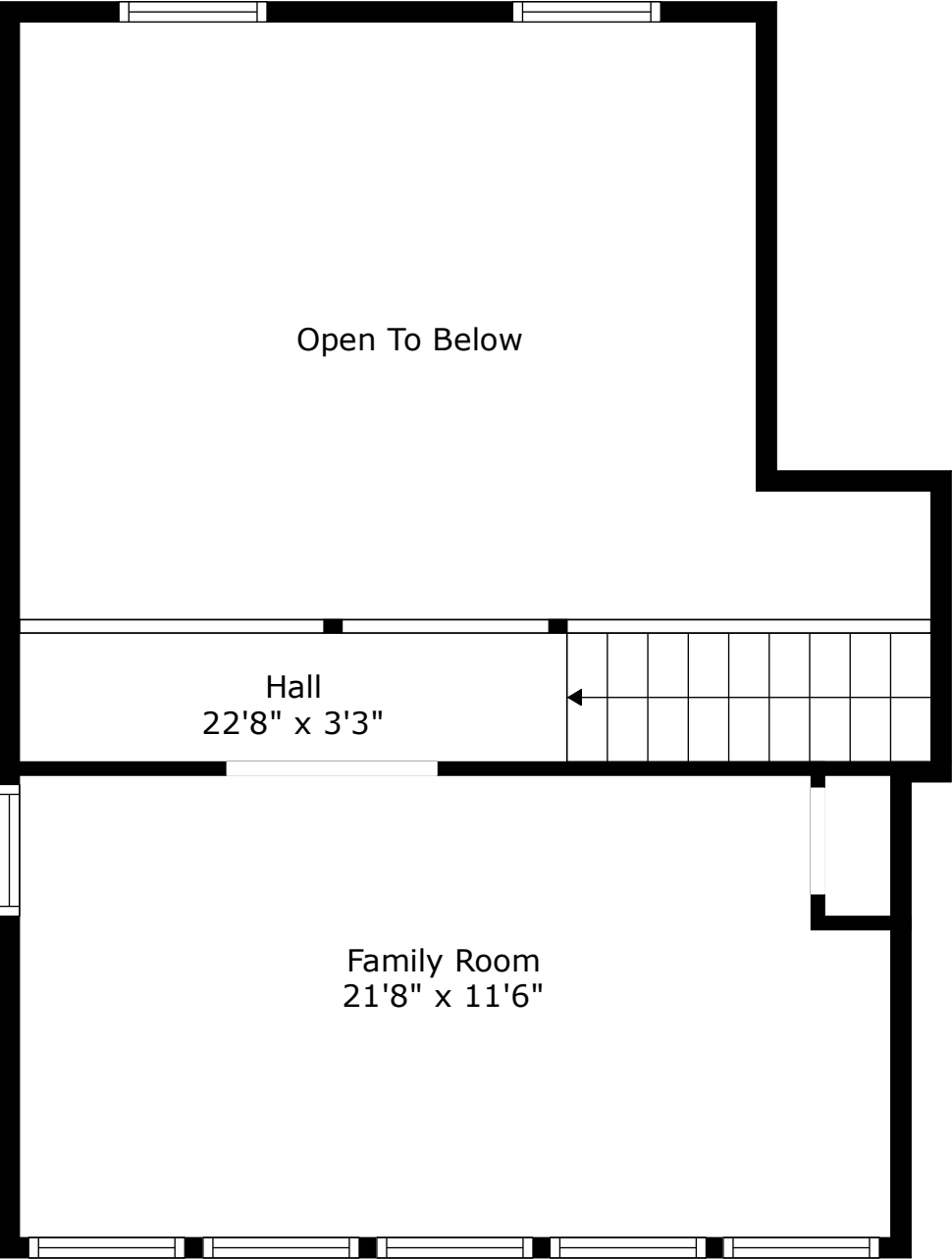


Floor 1

TOTAL: 1732 sq. ft
FLOOR 1: 1394 sq. ft, FLOOR 2: 338 sq. ft
EXCLUDED AREAS: PORCH: 49 sq. ft, GARAGE: 505 sq. ft, FIREPLACE: 11 sq. ft,
OPEN TO BELOW: 287 sq. ft

Floor Plan Created By Cubicasa App. Measurements Deemed Highly Reliable But Not Guaranteed.





Floor 2

TOTAL: 1732 sq. ft
FLOOR 1: 1394 sq. ft, FLOOR 2: 338 sq. ft
EXCLUDED AREAS: PORCH: 49 sq. ft, GARAGE: 505 sq. ft, FIREPLACE: 11 sq. ft,
OPEN TO BELOW: 287 sq. ft

Floor Plan Created By Cubicasa App. Measurements Deemed Highly Reliable But Not Guaranteed.

