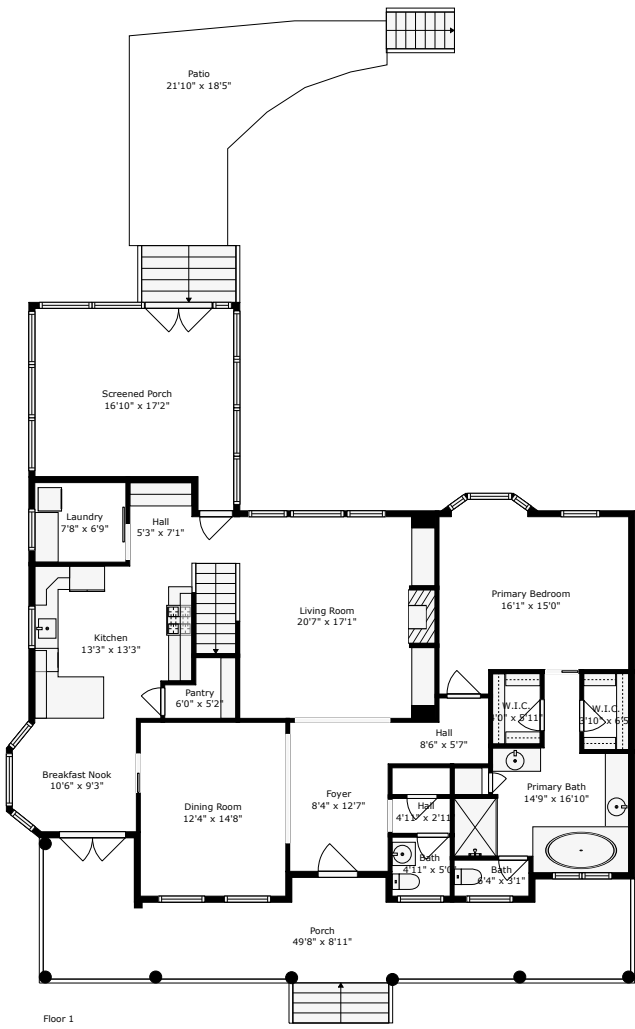
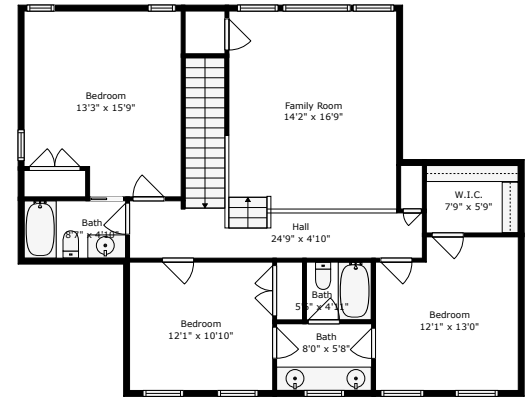
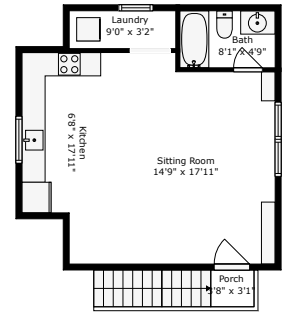


1021 Barfield Street

Center Park | Charleston, SC 29492



Floor 1



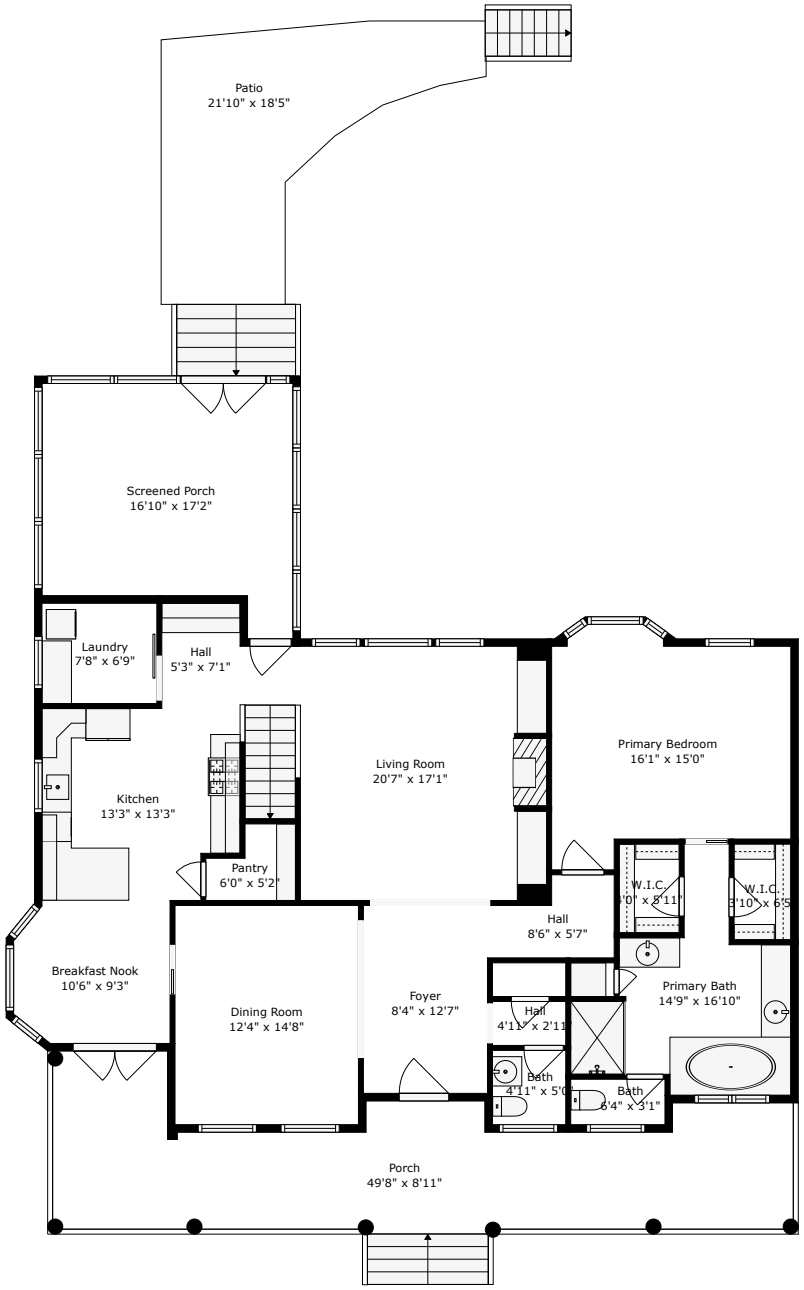
Floor 2

TOTAL: 3113 sq. ft
 FLOOR 1: 1579 sq. ft, FLOOR 2: 1534 sq. ft
 EXCLUDED AREAS: SCREENED PORCH: 249 sq. ft, PORCH: 439 sq. ft, PATIO: 271 sq. ft,
 BAY WINDOW: 9 sq. ft



1021 Barfield Street

Center Park | Charleston, SC 29492



Floor 1

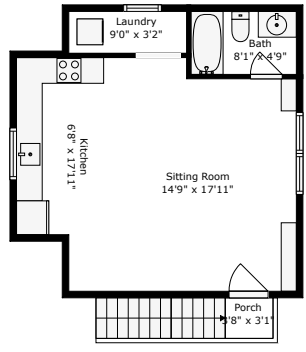
TOTAL: 3113 sq. ft
FLOOR 1: 1579 sq. ft, FLOOR 2: 1534 sq. ft
EXCLUDED AREAS: SCREENED PORCH: 249 sq. ft, PORCH: 439 sq. ft, PATIO: 271 sq. ft,
BAY WINDOW: 9 sq. ft

Floor Plan Created by Cubicasa App. Measurements Deemed Highly Reliable But Not Guaranteed.

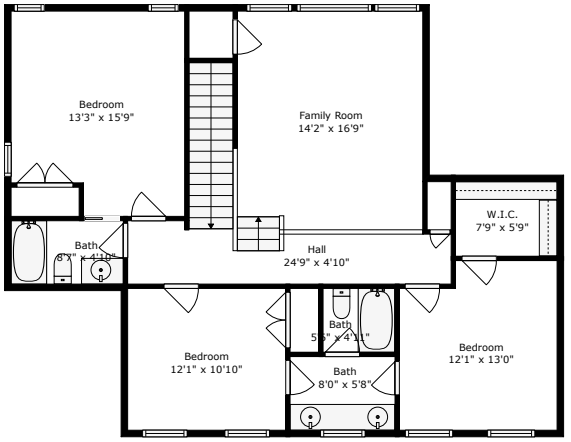


1021 Barfield Street

Center Park | Charleston, SC 29492



FROG



Floor 2

TOTAL: 3113 sq. ft
FLOOR 1: 1579 sq. ft, FLOOR 2: 1534 sq. ft
EXCLUDED AREAS: SCREENED PORCH: 249 sq. ft, PORCH: 439 sq. ft, PATIO: 271 sq. ft,
BAY WINDOW: 9 sq. ft

Floor Plan Created By Cubicasa App. Measurements Deemed Highly Reliable But Not Guaranteed.

