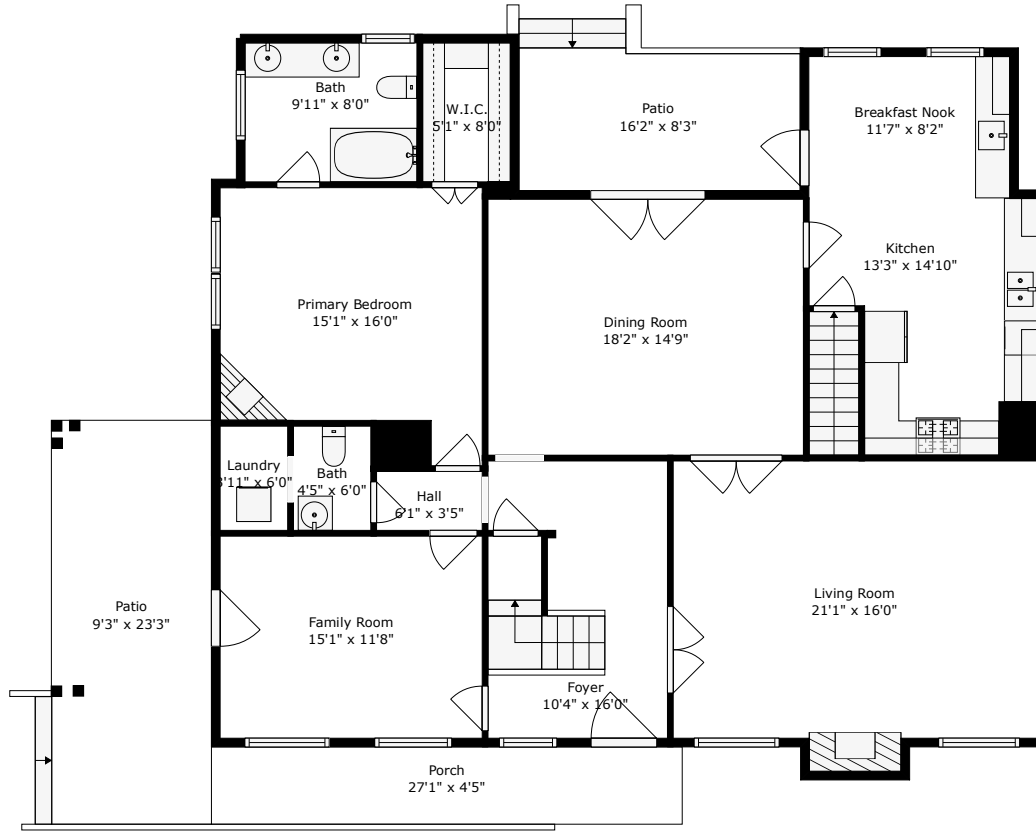
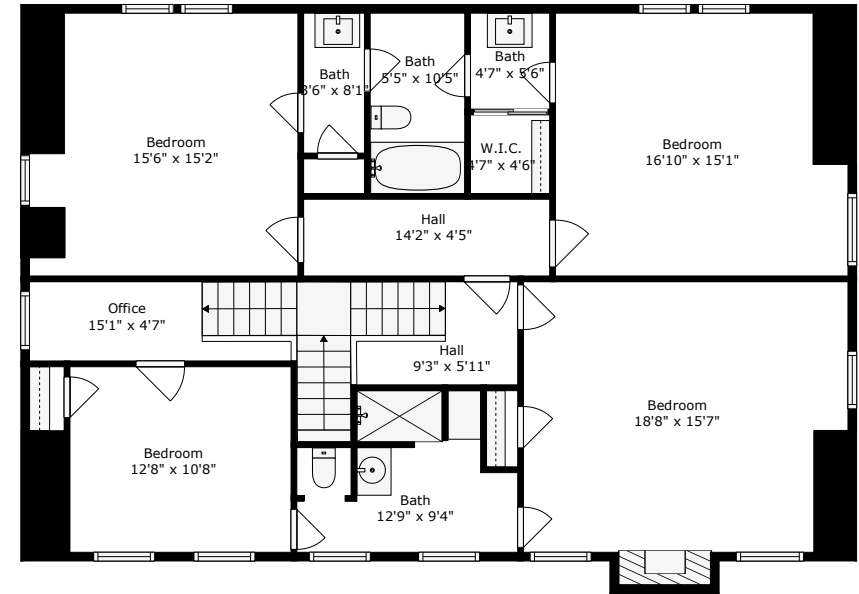


# 1001 N Longstreet Street

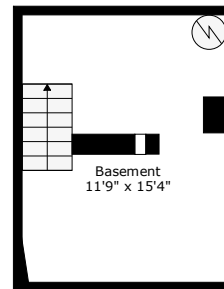
Kingstree, SC 29556



Floor 2



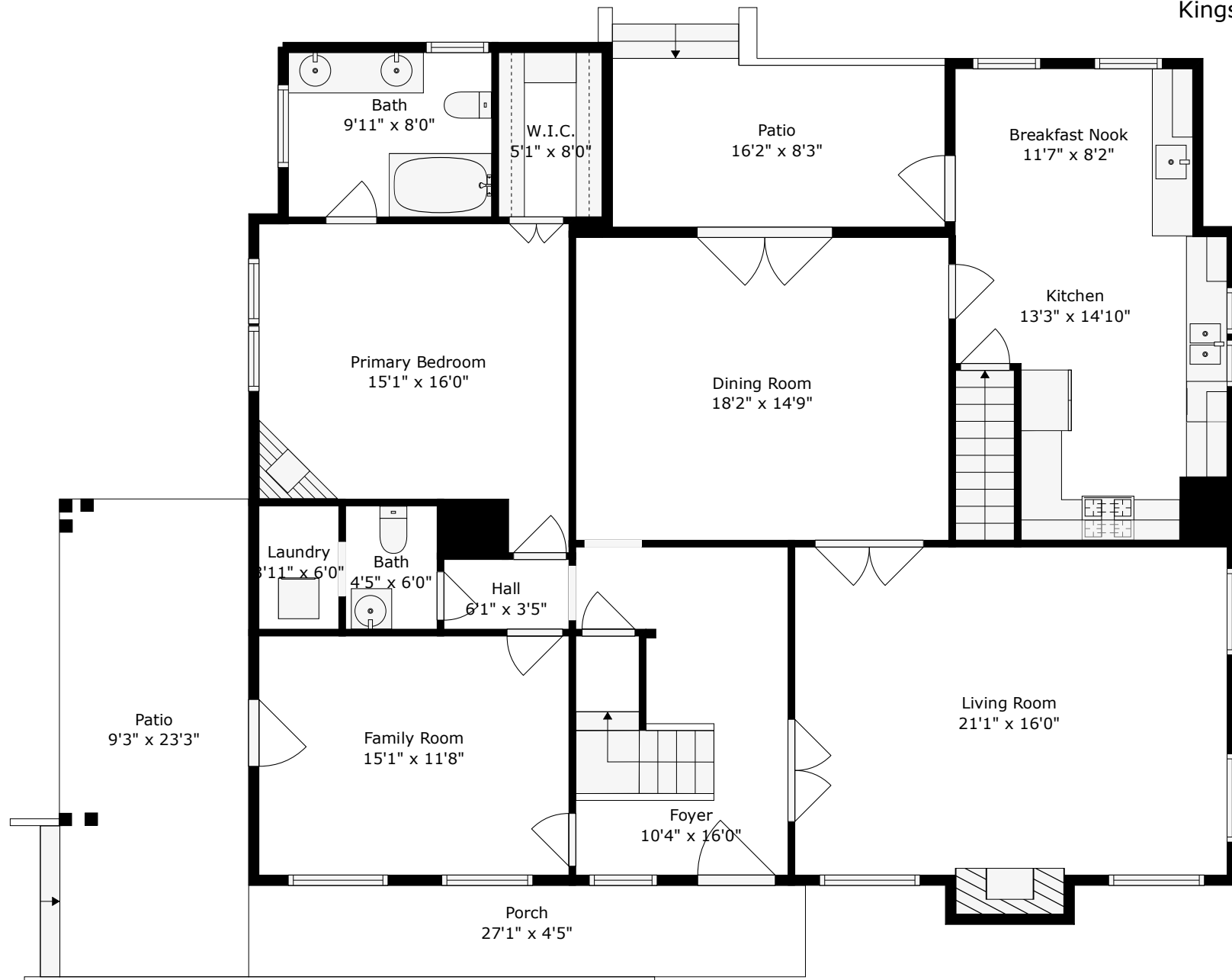
Floor 3



Floor 1

**TOTAL: 3098 sq. ft**  
 BELOW GROUND: 0 sq. ft, FLOOR 2: 1701 sq. ft, FLOOR 3: 1397 sq. ft  
 EXCLUDED AREAS: BASEMENT: 181 sq. ft, PATIO: 345 sq. ft, PORCH: 121 sq. ft,  
 FIREPLACE: 24 sq. ft  
 WALLS: 267 sq. ft



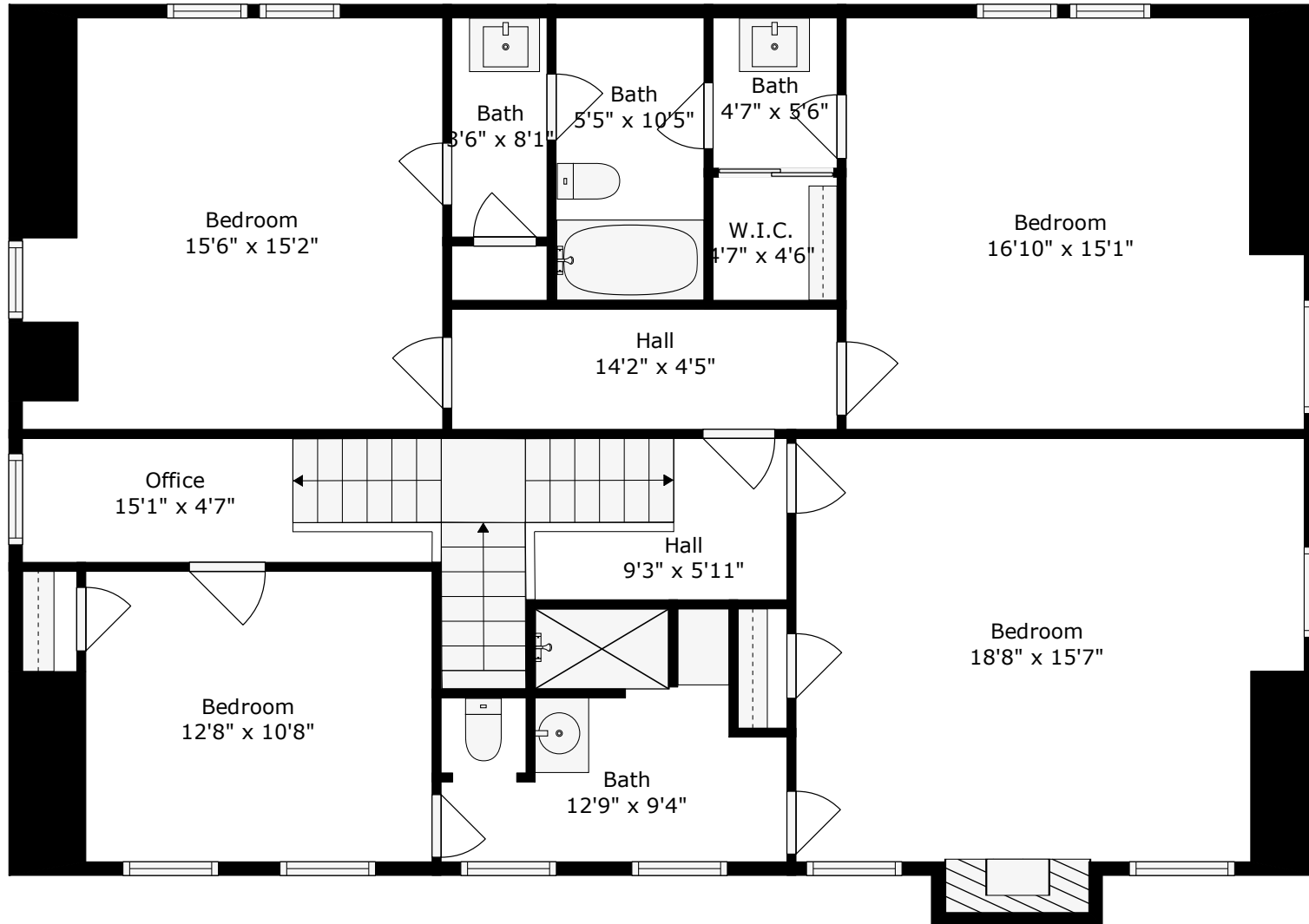


Floor 1

**TOTAL: 3098 sq. ft**

BELOW GROUND: 0 sq. ft, FLOOR 2: 1701 sq. ft, FLOOR 3: 1397 sq. ft  
EXCLUDED AREAS: BASEMENT: 181 sq. ft, PATIO: 345 sq. ft, PORCH: 121 sq. ft,  
FIREPLACE: 24 sq. ft  
WALLS: 267 sq. ft



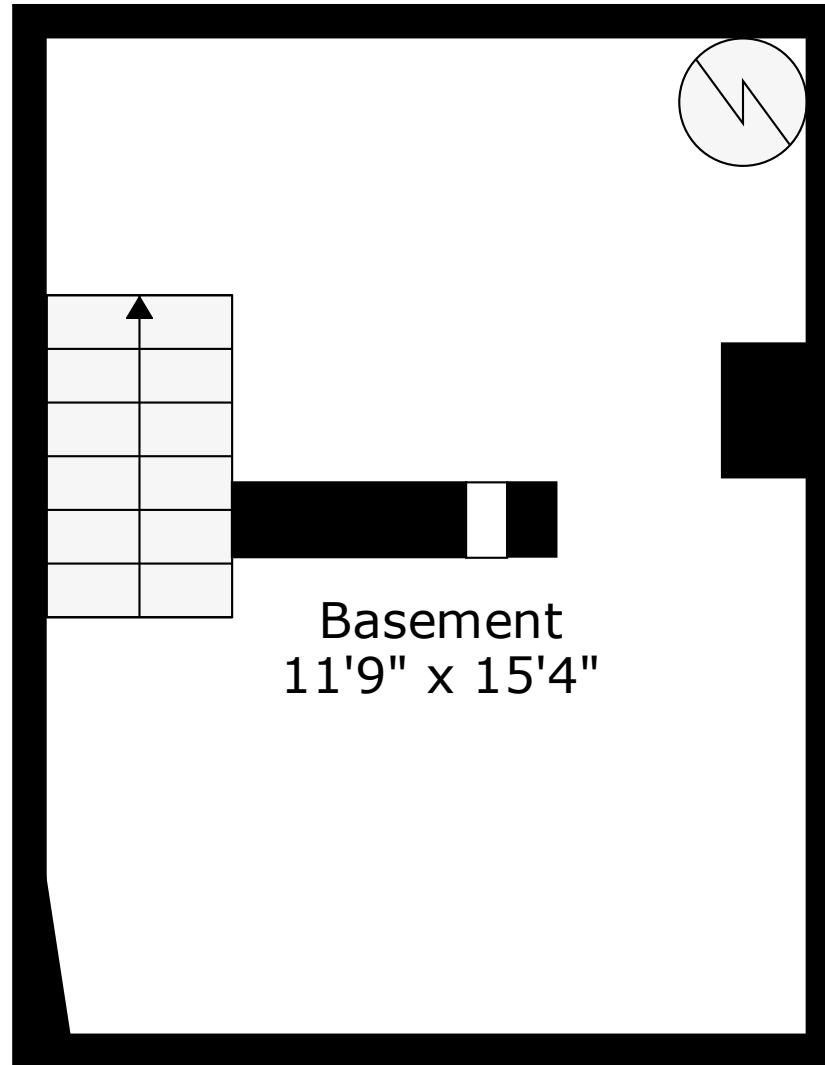


Floor 2

**TOTAL: 3098 sq. ft**

BELOW GROUND: 0 sq. ft, FLOOR 2: 1701 sq. ft, FLOOR 3: 1397 sq. ft  
EXCLUDED AREAS: BASEMENT: 181 sq. ft, PATIO: 345 sq. ft, PORCH: 121 sq. ft,  
FIREPLACE: 24 sq. ft  
WALLS: 267 sq. ft





Basement

**TOTAL: 3098 sq. ft**

BELOW GROUND: 0 sq. ft, FLOOR 2: 1701 sq. ft, FLOOR 3: 1397 sq. ft  
EXCLUDED AREAS: BASEMENT: 181 sq. ft, PATIO: 345 sq. ft, PORCH: 121 sq. ft,  
FIREPLACE: 24 sq. ft  
WALLS: 267 sq. ft

