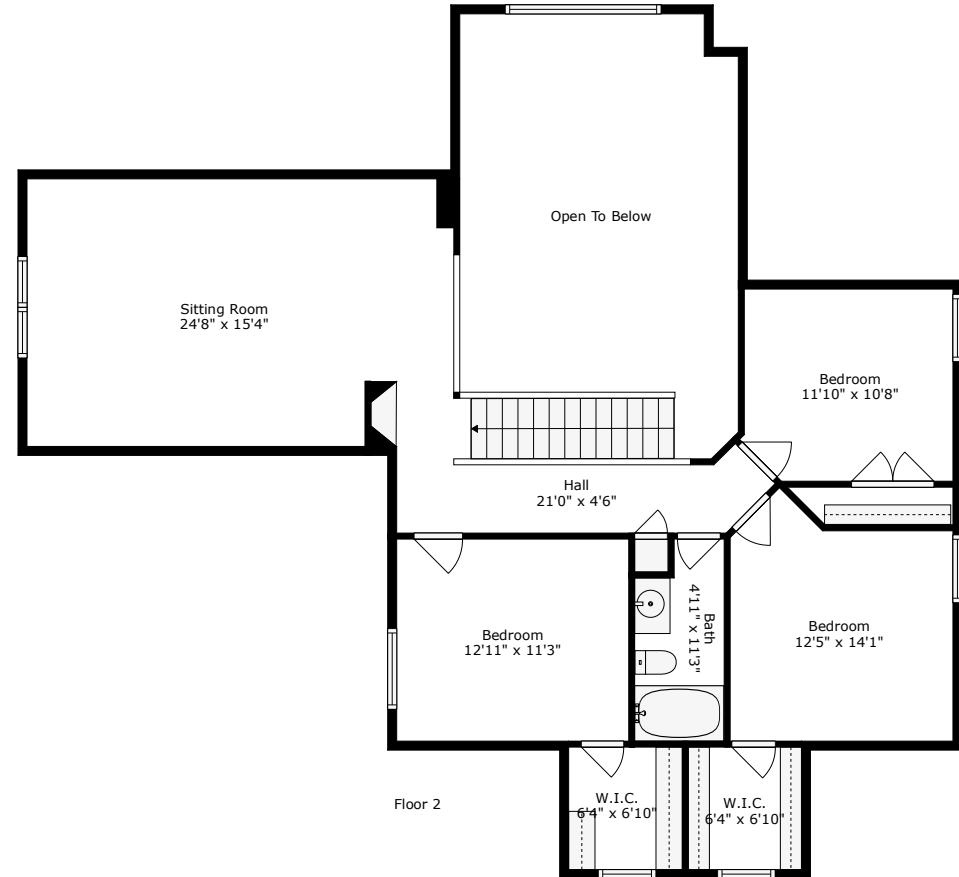
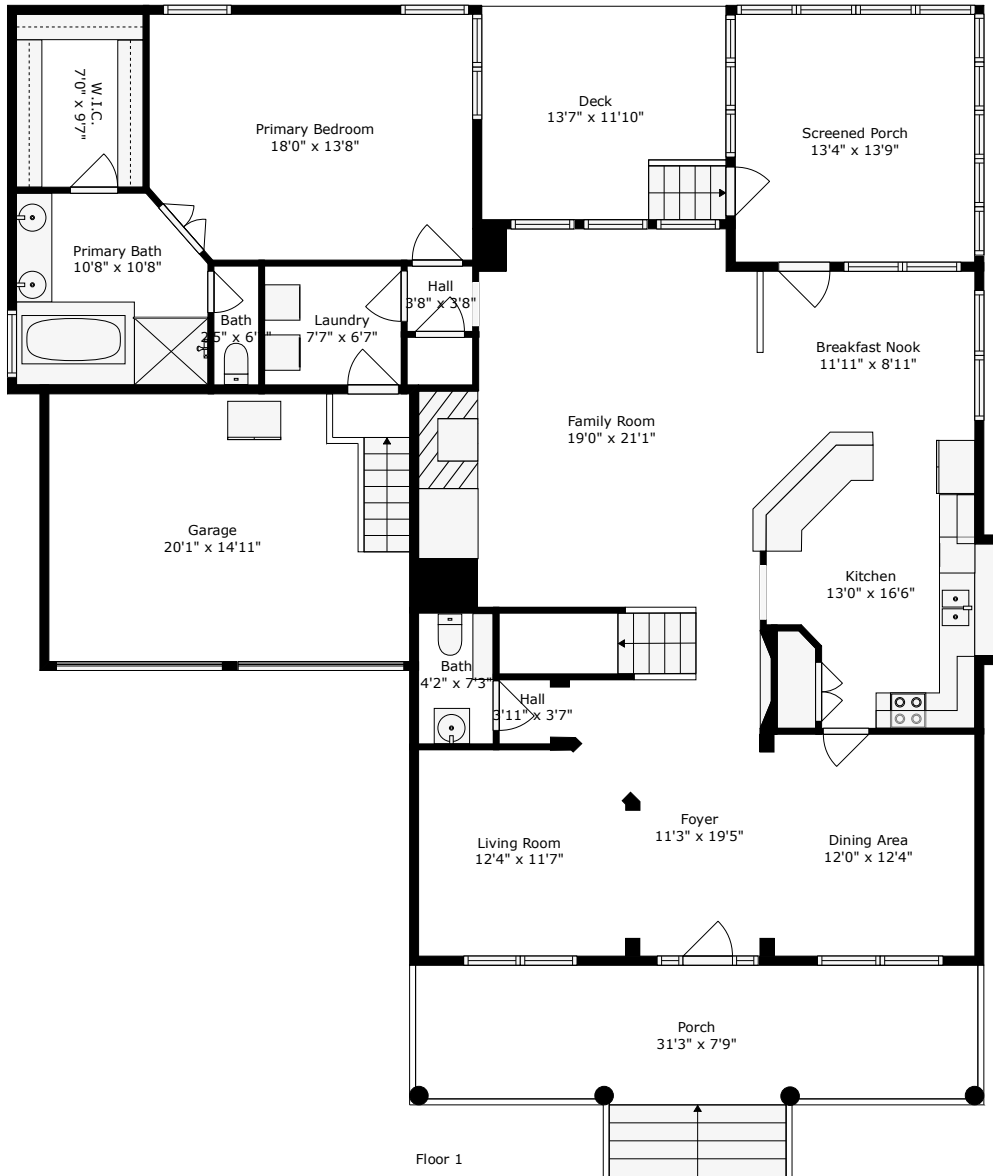


996 Cochran Street
Daniel Island | Charleston, SC 29492

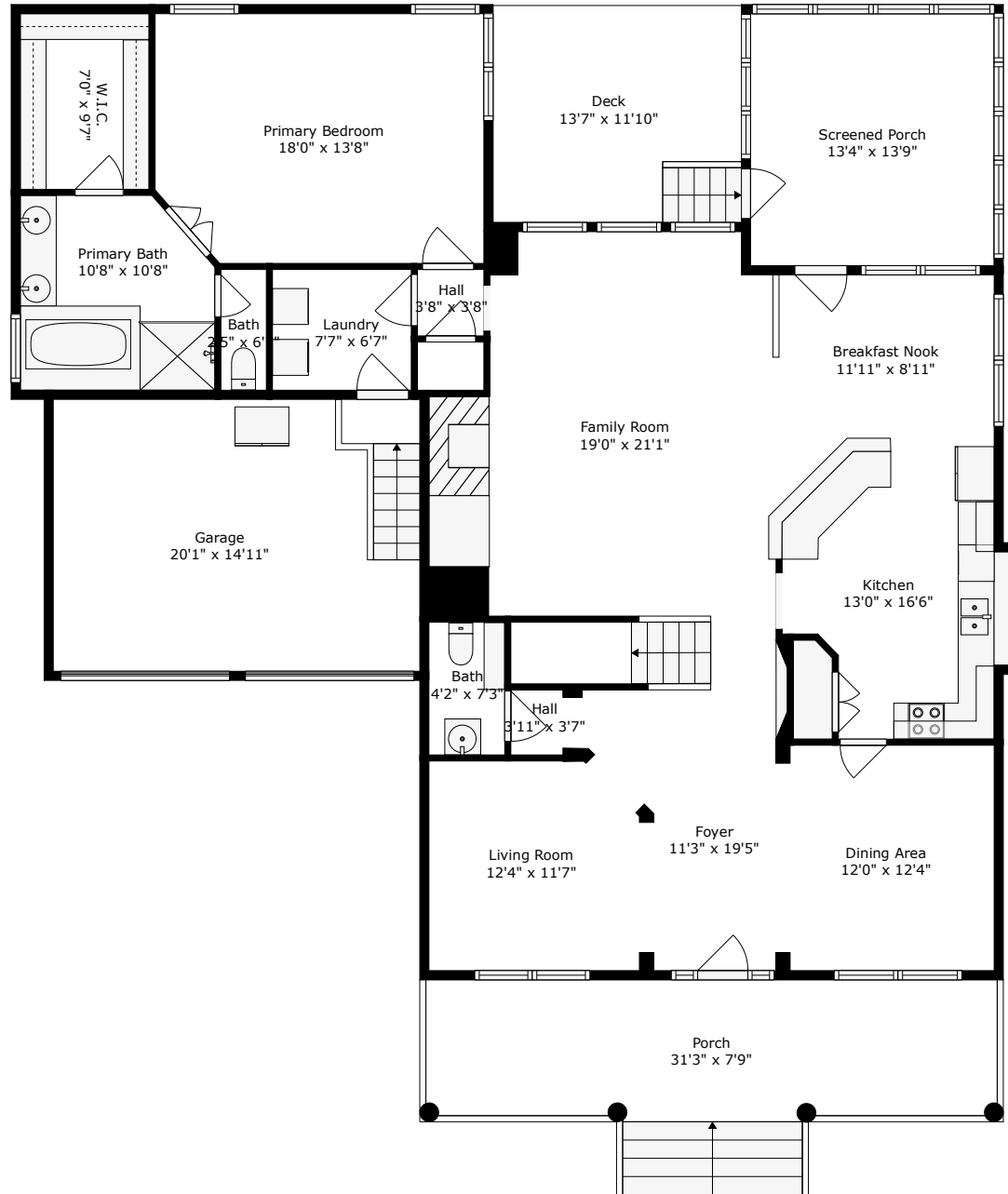


TOTAL: 2789 sq. ft
FLOOR 1: 1726 sq. ft, FLOOR 2: 1063 sq. ft
EXCLUDED AREAS: GARAGE: 299 sq. ft, SCREENED PORCH: 184 sq. ft, PORCH: 276 sq. ft,
DECK: 160 sq. ft, OPEN TO BELOW: 334 sq. ft, LOW CEILING: 35 sq. ft
WALLS: 245 sq. ft



996 Cochran Street

Daniel Island | Charleston, SC 29492



Floor 1

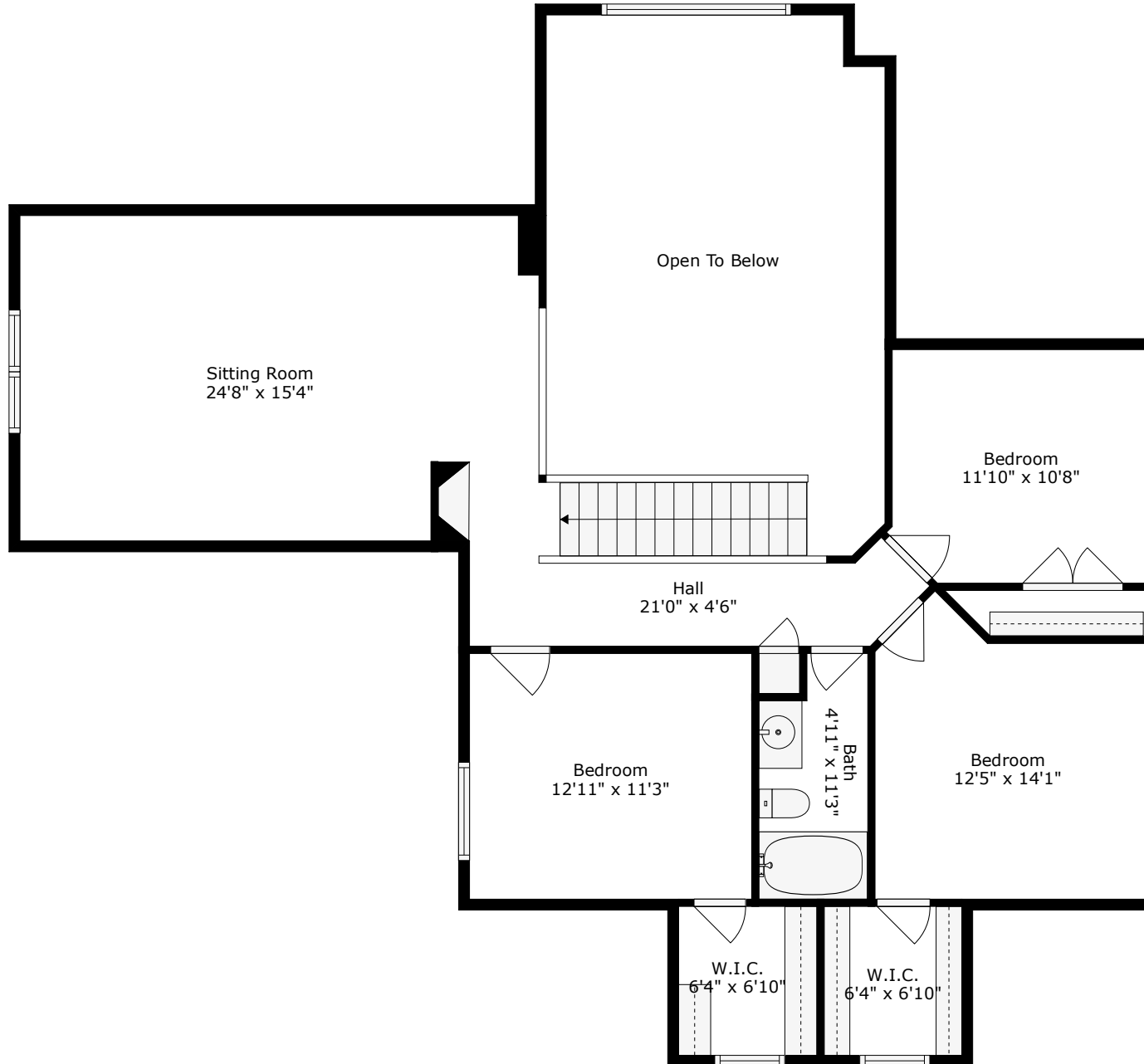
TOTAL: 2789 sq. ft

FLOOR 1: 1726 sq. ft, FLOOR 2: 1063 sq. ft

EXCLUDED AREAS: GARAGE: 299 sq. ft, SCREENED PORCH: 184 sq. ft, PORCH: 276 sq. ft,
DECK: 160 sq. ft, OPEN TO BELOW: 334 sq. ft, LOW CEILING: 35 sq. ft
WALLS: 245 sq. ft



996 Cochran Street
Daniel Island | Charleston, SC 29492



Floor 2

TOTAL: 2789 sq. ft

FLOOR 1: 1726 sq. ft, FLOOR 2: 1063 sq. ft

EXCLUDED AREAS: GARAGE: 299 sq. ft, SCREENED PORCH: 184 sq. ft, PORCH: 276 sq. ft,
DECK: 160 sq. ft, OPEN TO BELOW: 334 sq. ft, LOW CEILING: 35 sq. ft

WALLS: 245 sq. ft

