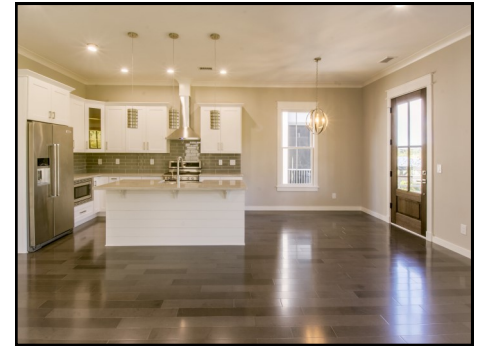


Experience the WOW factor of Lakefront Living



- New Construction Ready Now in desirable Watermark subdivision
 - Open 5BR, 4.5BA
- Large Gourmet kitchen with stainless steel appliances, custom cabinetry, and granite counter tops
- Bonus room with a private bath & kitchenette above the two car garage with room for storage.
- Double porches to enjoy allow you to capture the amazing views
- Within minutes from Towne Center, downtown and the beaches, this location can't be beat!

MLS # 15027763; Offered at \$754, 900



Katrina Johnson
CRS, ABR, CBR, & CNE
Diamond Circle of Excellence

Direct (843) 856.3972
Mobile (843) 452.2747

kjohnson@carolinaone.com
www.SellingCharlestonSC.com

