

1402 CAMP RD #3B, CHARLESTON, SC 29412

3 BD | 2 BA | 1,151 SQ. FT

OFFERED AT

\$255,000



PRICE IMPROVEMENT!

To get listing info about this property,



text LIST12900217  
to 800.701.6509

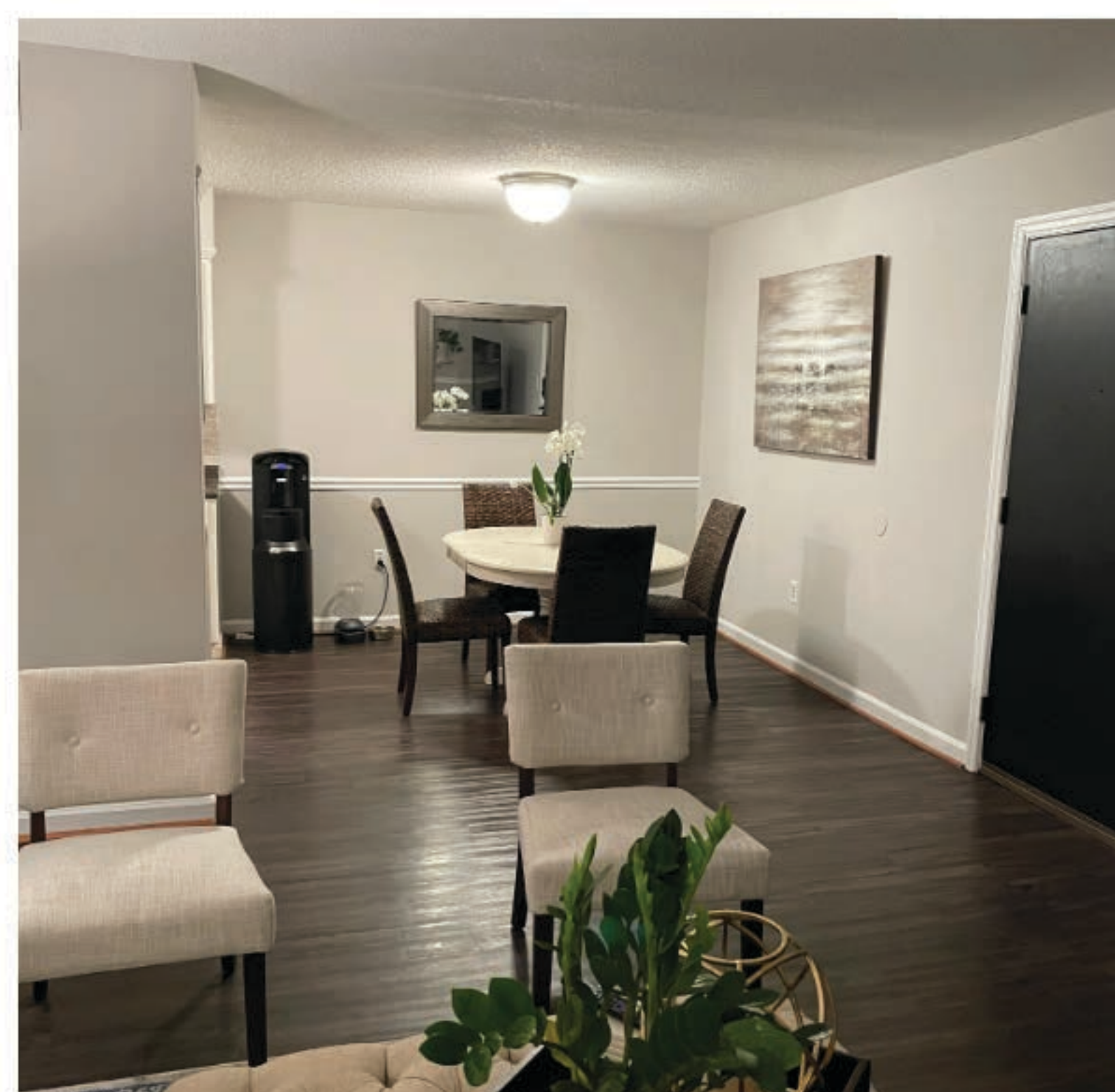
Message and data rates may apply

OR, scan  
this code



## ABOUT THIS PROPERTY

Welcome to Point James, a centrally located community on James Island. This ground-floor condominium features an open floor plan, with a spacious living room that includes a fireplace and offers direct access to a private patio. The dining area flows into a modern kitchen equipped with stainless steel appliances and a large pantry. The primary suite, situated at the back of the unit, offers added privacy and features a walk-in closet, vanity area, and updated bathroom fixtures. Two additional bedrooms share a full hall bath. A laundry area is conveniently located off the hallway. Community amenities include a swimming pool, and fitness center



1,151  
SQ. FT.

Street  
PARKING



**ANDREW TACKITT**

Radekopf & Associates  
LIC# 63129

m: (843) 437-8726 | o: (843) 579-2217

e: andrew@radekopf.com

w: www.radekopf.com

1563 Meeting Street Rd., Charleston, SC 29405

1402 CAMP RD #3B, CHARLESTON, SC 29412

3 BD | 2 BA | 1,151 SQ. FT



ANDREW TACKITT

m: (843) 437-8726 | o: (843) 579-2217  
e: andrew@radekopf.com  
w: www.radekopf.com



### VERY CONVENIENT

This home is in a **very convenient** area. Some errands in this location require a car and most major services are within 1 mile.

- CLEANERS 0.7 MI
- ATM 0.7 MI
- PHARMACY 0.7 MI
- MEDICAL 0.7 MI
- GAS 0.7 MI
- COFFEE 0.9 MI
- GYM 0.9 MI
- MOVIE THEATER 1.7 MI



### SCHOOLS IN YOUR AREA

The assigned schools are **above average** for the area. There are also 13 private schools and 3 charter schools within 5 miles.

- 9 RATING** PK-5 HARBOR VIEW ELEMENTARY SCHOOL ASSIGNED
- 7 RATING** 6-8 CAMP ROAD MIDDLE SCHOOL ASSIGNED
- 8 RATING** 9-12 JAMES ISLAND CHARTER HIGH SCHOOL ASSIGNED



### THE GREAT OUTDOORS

This home is located near a variety of outdoor activities.

#### POPULAR

- GOLF COURSE COUNTRY CLUB OF CHARLESTON (2.5 MILES)
- PARK WHITE POINT GARDEN (3.1 MILES)
- DOG PARK WEST ASHLEY GREENWAY (3.4 MILES)



### NEIGHBORHOOD EATS

This home is located near 139 moderately priced restaurants and has an **above average** variety of cuisines.

#### BY CATEGORY

|                             |    |                            |    |
|-----------------------------|----|----------------------------|----|
| AMERICAN .....              | 36 | INTERNATIONAL .....        | 12 |
| FAST FOOD .....             | 18 | SEAFOOD .....              | 12 |
| BARS .....                  | 15 | BARBECUE .....             | 9  |
| MEXICAN .....               | 14 | VEGAN AND VEGETARIAN ..... | 8  |
| CAFES, COFFEE AND TEA ..... | 13 | OTHER .....                | 13 |

