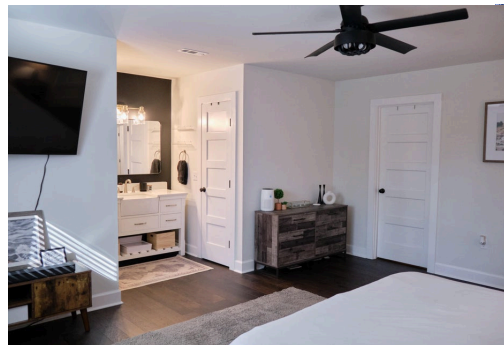
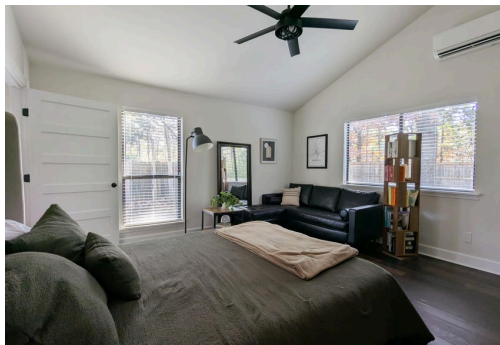


Open House, Saturday January 24th, 2-5pm

1427 Emerald Forest Parkway | Charleston, SC 29414



WOW, YOU FOUND THE ONE!

Centrally located single-level, move-in ready home in West Ashley, featuring not just one primary bed w/ walk-in closet and renovated bath, BUT 2. The second primary even features a separate entrance via the foyer/sitting/reading room. Mother-in-law suite, guest bed, teen/college bedroom,... limitless potential. The two secondary bedrooms include a recently renovated full hall bath. That's right, 3 FULL baths. Lovely engineered hardwoods welcome you into the large living room with a gorgeous fireplace and a bar for entertaining. The kitchen features a gas range, granite countertops and plenty of cabinet space. The spacious garage and the sizable driveway allows you to comfortably keep multiple cars, and even some toys for the family. The open backyard with a large patio and sitting area are just perfect for entertaining or playing "ball". With the roof and HVAC installed in 2022 and other recent improvements like fencing, garage door and opener, epoxy flooring, custom closet in primary bed and recessed lighting; this home is truly turnkey. Right off McConnell, you can easily reach Bees Ferry, 17, 526 and 26 quickly. WO Thomas Boat Landing, shopping, restaurants, beaches and downtown within minutes.

MLS# 26000328

\$525,000



Chris Patricola

732-778-4385

patricolare.sc@gmail.com



COLDWELL BANKER
REALTY

Coldwell Banker Realty
1127 Queensborough Blvd | Suite 103
Mt Pleasant, SC 29464