

NEW LISTING!



- 3 BR / 2.5 BTH
- Approx. 3576 sq. ft
- Open Floor Plan
- 10 Acres
- MLS# 26006843

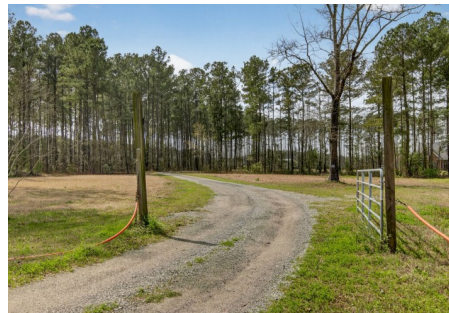
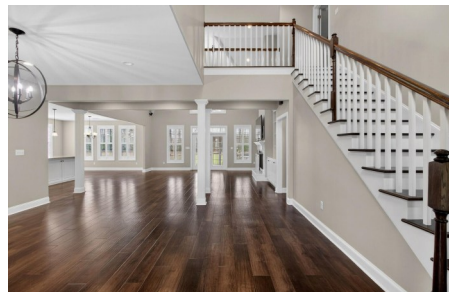
\$1,200,000

2417 Old Highway 52 Moncks, Corner

Great Opportunity! 10 acres! 12 miles from Summerville!

This property has been cleared – with a beautiful custom-built brick home (3576 Sq FT), 2-car garage, and 1200 Sq Ft 2-car garage/ workshop, for that quiet country living....OR you could subdivide for future development potential....

Home Features: gleaming wood floors throughout the 1st floor, dining/ family room area offers a 2 story vaulted ceiling, as well as a gas fireplace, built-in cabinets - overlooking the amazing eat-in kitchen, with large island, stainless steel appliances. The owner's suite is located on the 1st floor and has 2 walk-in closets, separate vanities, large soaking tub, walk in tiled shower—This one is Waiting for You!



Carolina One
Real Estate



Nell Barrineau

(843) 729 9993 cell

(843) 284 1800 office

nellb@carolinaone.com

2713 Highway 17 N

Mt. Pleasant, SC 29466