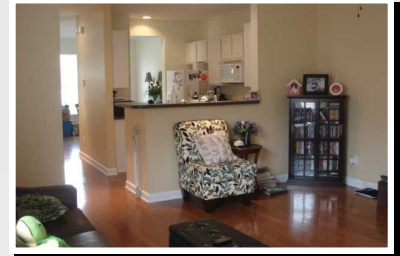


Whitney Lake Townhouse!



2933 Sweetleaf Ln ~ Johns Island MLS# 1305919 ~ \$162,500

LOVELY, WELL MAINTAINED TWO BEDROOM HOME ON NICE CORNER LOT, WITH LOTS OF WINDOWS AND LIGHT! THIS HOME HAS WOOD FLOORS THROUGHOUT. THE KITCHEN OPENS INTO THE FAMILY ROOM AND COMES WITH UPGRADED WHITE CABINETS, BUILT IN MICROWAVE, FLAT TOP STOVE, UPGRADED DISHWASHER AND BREAKFAST BAR. THERE IS A SCREENED PORCH LOCATED OFF THE FAMILY ROOM WITH A PRIVACY FENCE AND GENEROUS SIZED STORAGE UNIT. ALL TWO BEDROOMS ARE LOCATED ON THE 2ND FLOOR. THE LARGE MASTER HAS VAULTED CEILINGS WITH HIS/HER CLOSETS FOR EXTRA STORAGE SPACE AND OPENS UP TO THE COVERED PORCH AREA. IN ADDITION, THIS HOME HAS A CENTRAL VAC SYSTEM, IN-CEILING SPEAKERS WITH VOLUME CONTROL, AND ONE YEAR FREE MONITOR ALARM SYSTEM PROVIDED. PARKING IN REAR AS WELL AS FRONT STREET PARKING. WHITNEY LAKE HAS A 25 ACRE LAKE, COMMUNITY DOCK, KAYAK RACKS, DOG PARK AND WALKING TRAILS. GREAT LOCATION, HARD TO BEAT, WITH ONLY 10 MINUTES TO DOWNTOWN CHARLESTON AND 20 MINUTES TO THE OCEAN AT BEACHWALKER PARK.



Marilyn Stewart

Cell 843-297-4098

Fax 843-416-2304

marilyn@charlestonsells.com

