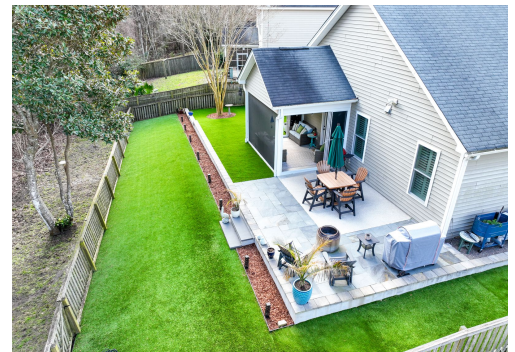


JUST LISTED! UPDATED MT PLEASANT ONE STORY

3615 Franklin Tower Dr, Mount Pleasant, SC 29466



Price upon request

This 3 BR, 2 BA, 1,659 sq ft one-story home in Lieben Park offers privacy, upgrades, and an exceptional Mount Pleasant location — all under \$650,000. Set on a premium wetland-backed lot, enjoy a screened porch, bluestone patio, and tiered turf backyard. Inside features LVP flooring, fresh paint, and a bright kitchen with granite countertops, stainless steel appliances (gas range), and 42-inch cabinets. Additional highlights include Pella windows and doors, plantation shutters, surround sound wiring, and generous garage storage. Major updates include a new 2025 HVAC with transferable warranty, tankless water heater, and HERS-rated energy efficiency. Minutes to Costco, Carolina Park shopping and dining, Roper St. Francis Mt Pleasant Hospital, and top Mount Pleasant schools.



JIM GRADY
Broker/Sales Associate
M: 843.460.4939
jim.grady@cbcarolinas.com
CHS-Homes.com



The property information herein is derived from various sources that may include, but not be limited to, county records and the Multiple Listing Service, and it may include approximations. Although the information is believed to be accurate, it is not warranted and you should not rely upon it without personal verification. Not intended as a solicitation if your property is already listed by another broker. Affiliated real estate agents are independent contractor sales associates, not employees. ©2026 Coldwell Banker® Realty. All Rights Reserved. Coldwell Banker and the Coldwell Banker logos are trademarks of Coldwell Banker Real Estate LLC. The Coldwell Banker® System is comprised of company owned offices which are owned by a subsidiary of Anywhere Advisors LLC and franchised offices which are independently owned and operated. The Coldwell Banker System fully supports the principles of the Fair Housing Act and the Equal Opportunity Act.