

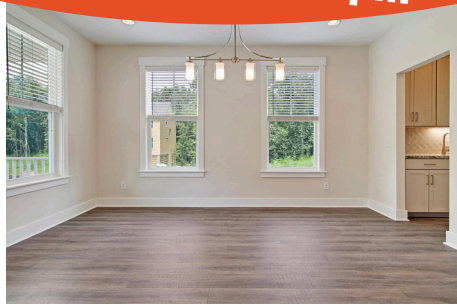
# Magnolia



**OPEN HOUSE**  
Saturday, March 30 from 11:00 to 2:00pm



**MLS # 23026387**



**1300 Lieben Rd.**

**Move In Ready!**



**Price - \$1,019,000**

- FINAL PHASE - Only 3 left
- Elevated Construction w/double front porches
- Gas Lanterns flanking glass front entry door
- Modern Rectilinear Electric Fireplace
- Craftsman Trim Package throughout

- Screened In Porch on back of home
- 4 Bedrooms | 3 Full Baths | 3,373 sq ft
- Deluxe Kitchen with large Island that seats 4+
- 2nd and 3rd Floor Lofts
- Primary Suite has double closets & Upgraded Luxury Bath

WANDO FOREST, a new construction neighborhood in Mt. Pleasant, is comprised of 18 homesites that are bordered by open green space; woods and wetlands. Wando Forest is conveniently located near the sandy beaches of Isle of Palms, and within walking distance of Wando High School. It's minutes away from the Town Center for great shopping, many fine restaurants, and 20 minutes to renowned Historic Downtown Charleston.



**Sheryl Greenberg**  
**Community Sales Manager**  
**843 296-4144**

**sheryl.jmh@gmail.com**

"An affiliate of Carolina Elite Real Estate"



[www.jmeyerhomes.com](http://www.jmeyerhomes.com)