

Commercial



**** Owner Financing Available ****

1037 Battery Park Place— Mt. Pleasant, SC \$ 650,000 MLS # 1215505



- ◆ Building SF: 2769
 - A - Downstairs 1769 SF
 - B - Upstairs 1000 SF
- ◆ Renovated class “B+” office space
- ◆ Rear entrance downstairs
- ◆ Separate entrance for upstairs
- ◆ Easy access from US Hwy 17
- ◆ Heavily traveled frontage road
- ◆ Tenant signage available
- ◆ Corner lot with curb cuts on Both sides of corner
- ◆ Parking for 13+ vehicles
- ◆ Lobby, reception, two restrooms, individual offices, break room, storage space.

**** Available for LEASE ****

Achieving success by helping others reach their goals in real estate.

*Homes, land, lots
Leases, investment,
Commercial.*



Steve Olson
(843) 412-9848

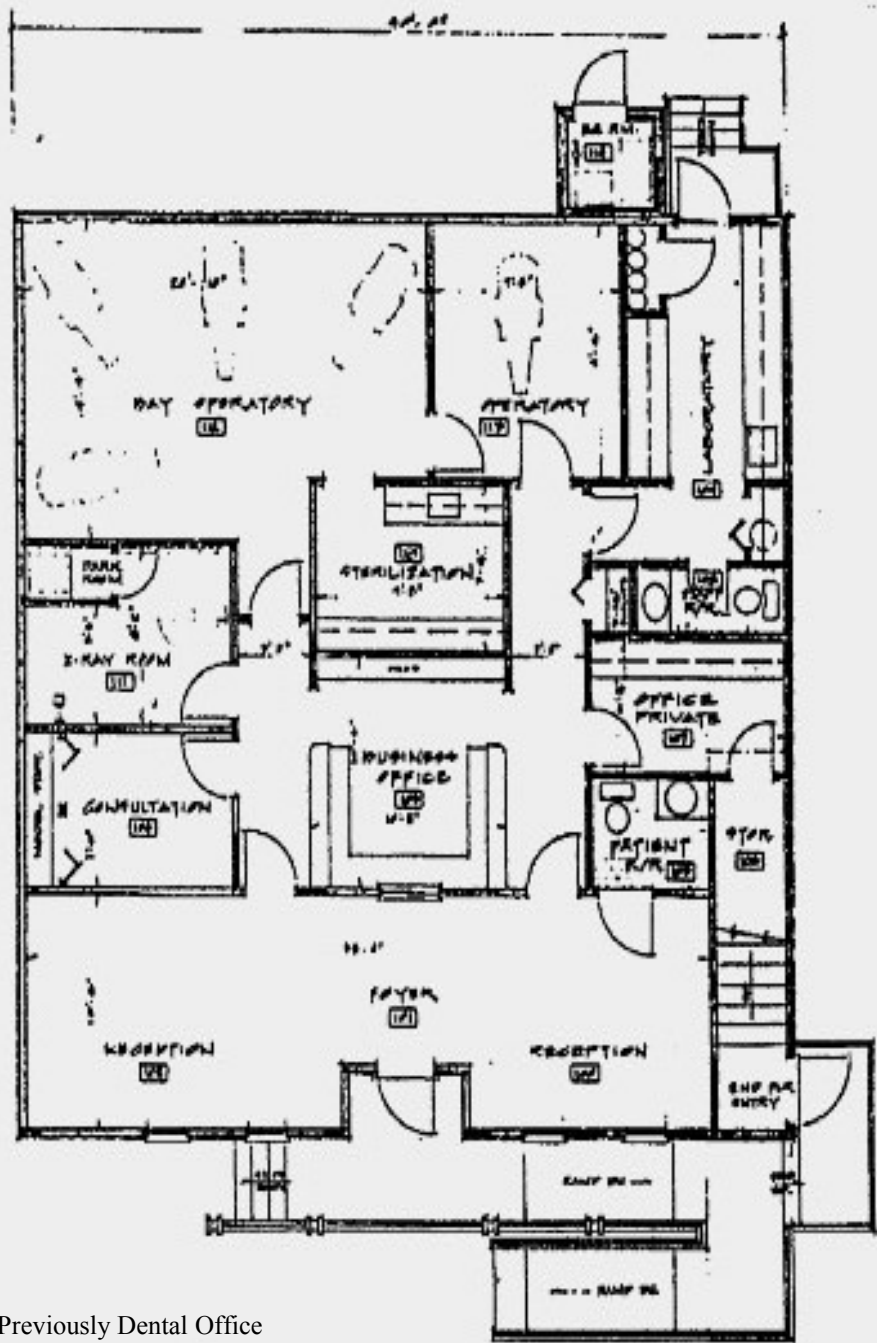
Joye Ridgeway
(843) 270-8665



www.iBlogCharleston.com

www.CallJoye.com

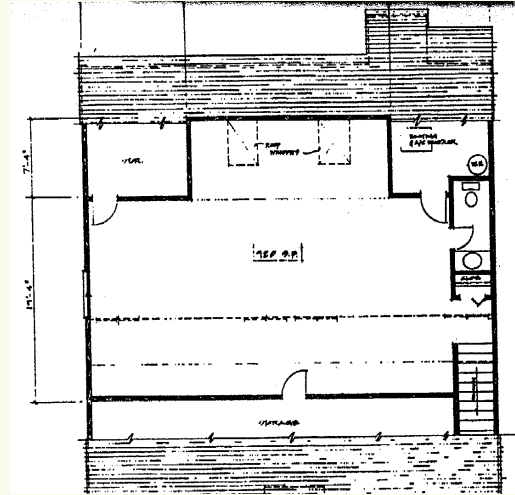
Downstairs Office Suite



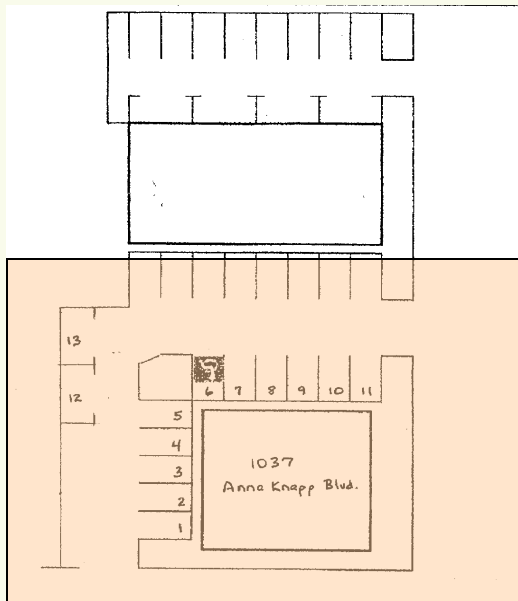
Previously Dental Office



Upstairs Area



Parking

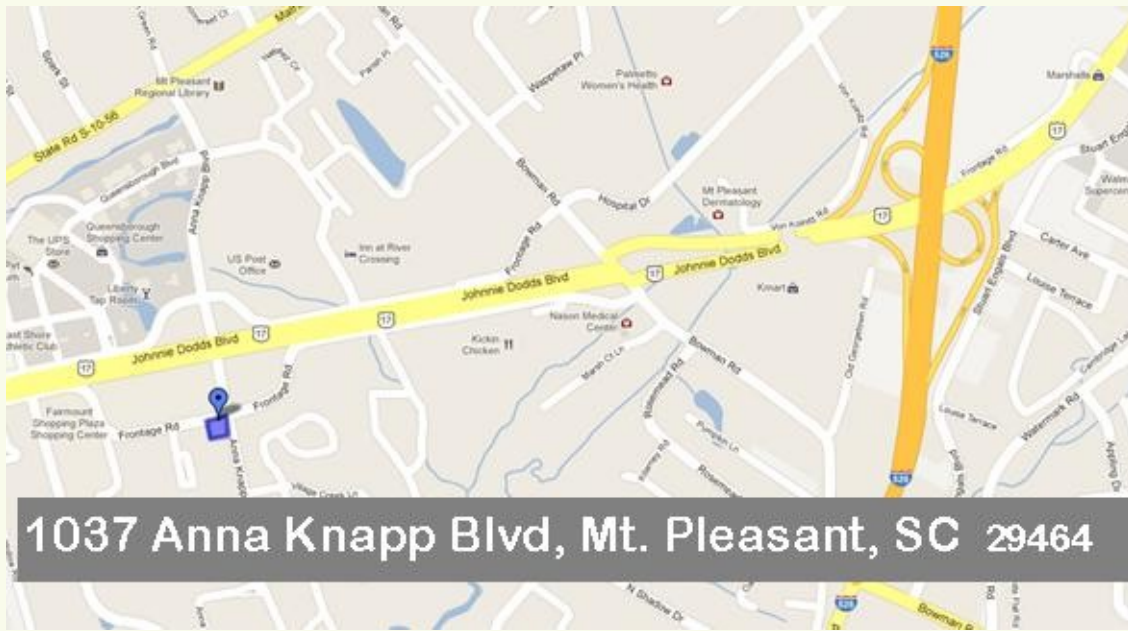


General Information

- For Sale: \$ 650,000
- Owner Financing Available
- Outstanding commerce location
- Close to I-526
- MLS #: 1215505

- Also -

Available for lease
MLS#: 1215517



From US Hwy 17, East onto Anna Knapp. First corner, left on Frontage Rd.

CALL FOR SHOWING APPOINTMENT

1037 Anna Knapp Blvd, Mt. Pleasant, SC 29464



1037 Anna Knapp Blvd, Mt. Pleasant, SC 29464



Steve Olson
(843) 412-9848



Achieving success by helping others reach their goals in real estate.

*Homes, land, lots
Leases, investment,
Commercial.*



"Google Me"

Joye Ridgeway
(843) 270-8665



www.iBlogCharleston.com

www.CallJoye.com